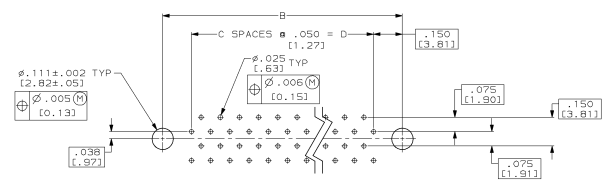
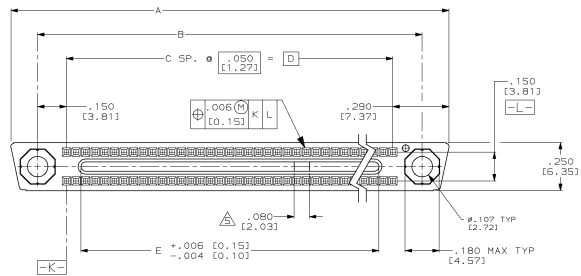
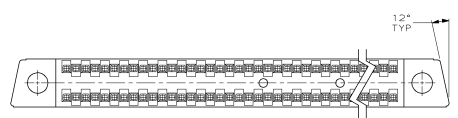
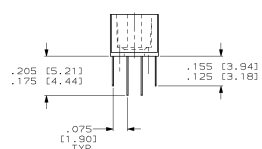
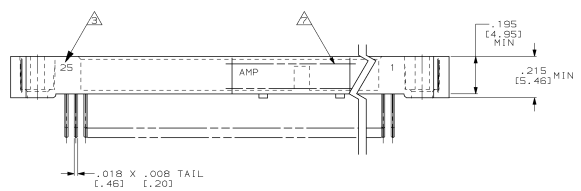


DRAWING MADE IN THIRD ANGLE PROJECTION
 THIS DRAWING IS UNPUBLISHED. RELEASED FOR PUBLICATION
 © COPYRIGHT 19 BY AMP INCORPORATED. ALL INTERNATIONAL RIGHTS RESERVED.

REV	DATE	APPD	DESCRIPTION
B	1-3-92	TA	REDRAWN PER EC DF-5331
C	3-31-93	TA	REV PER DF-5825
D	3-23-93	TA	REV PER 0500-0297-93
E	1-17-96	TA	REV PER 0500-3448-95
F	08-07-06	TT	REV PER 0500-5606-96



RECM. .P.C. BD. LAYOUT



- △ HOUSING MATERIAL: LIQUID CRYSTAL POLYMER PER MIL-PRC-24513, GLCP-30F, COLOR: GRAY.
- △ CONTACT MATERIAL: BRASS.
- △ END CAVITY IDENTIFICATION NUMBERS MARKED ON FAR SIDE SURFACE (SEE TABLE).
- 4. MUST MEET REQUIREMENTS OF MIL-C-55302.
- ON -2 ONLY.
- CONTACT FINISH: .00050 GOLD IN CONTACT AREA, TIN-LEAD ON TINES, ALL OVER NICKEL UNDERPLATE.
- *AMP*, P/N & DATE CODE, MARKED IN THIS APPROXIMATE AREA, FAR SIDE.

CONTACT IDENT NUMBERS	D	C	B	A	NUMBER OF CONTACTS	PART NUMBER	
1 - 50	2.300 (58.42)	2.450 (62.23)	49	2.750 (69.85)	3.040 (77.22)	100	446346-2
1 - 25	1.050 (26.67)	1.200 (30.48)	24	1.500 (38.10)	1.790 (45.47)	50	446346-1

DO NOT SCALE PRINT, UNLESS SPECIFIED	DR 11-22-91	T. ALEXANDER	AMP AMP Incorporated Harrisburg, PA 17105-3008
DIMENSIONS IN INCHES (mm)	CHK 1-3-92	D. GUTTER	
TOLERANCES: DIA	APPD 1-3-92	D. GUTTER	
2 PLE DEC	APPD 1-7-92	T. ALEXANDER	
3 PLE DEC			NAME: RECEPTACLE ASSEMBLY, MINI-BOX, SPECIAL PRODUCT SPEC: - FINISH: △
	APPLICATION SPEC		SIZE: D CASE CODE: 00779 DRAWING NO: 446346 WEIGHT: - SCALE: 4:1 SHEET: 1 OF 1

CUSTOMER DRAWING