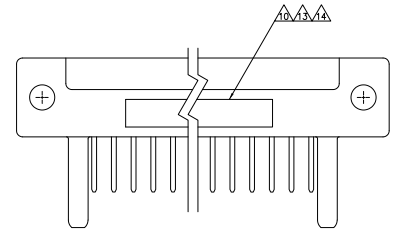
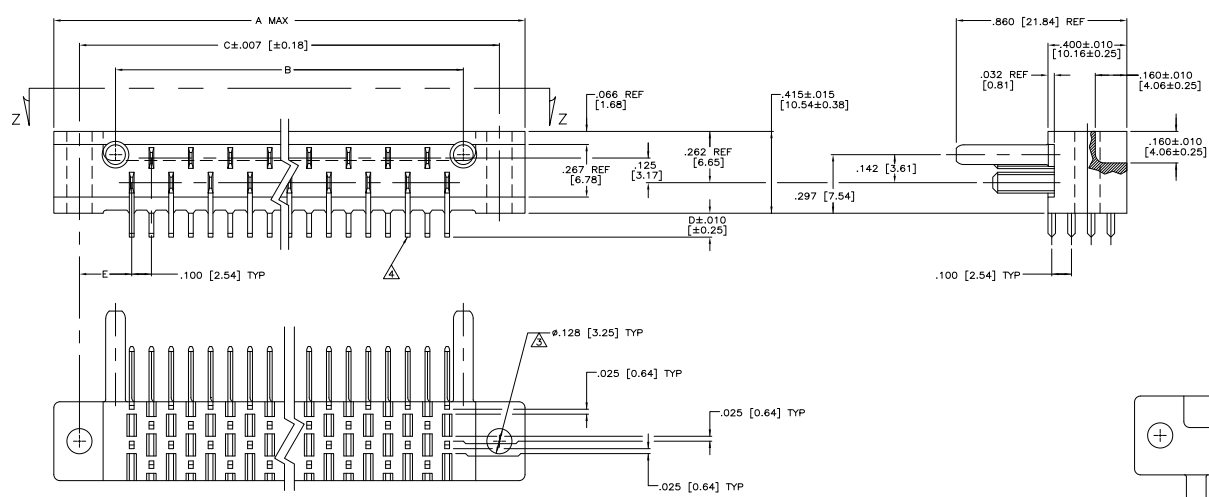
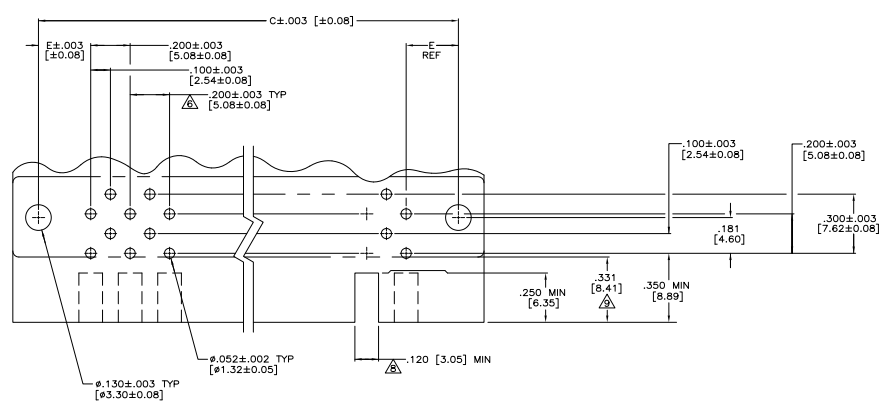


THIS DRAWING IS UNPUBLISHED. ALL RIGHTS RESERVED.
 © 2008 TYS ELECTRONICS CORPORATION

REV	DATE	DESCRIPTION	BY	CHK
DF	HO			
AV		REV PER ECO-07-021016		



VIEW Z-Z

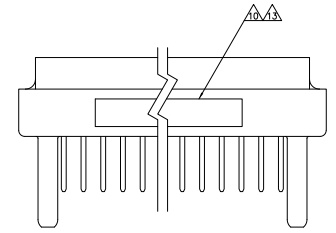
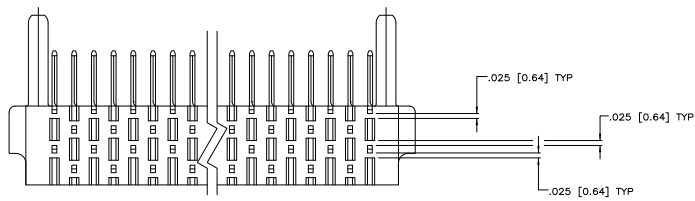
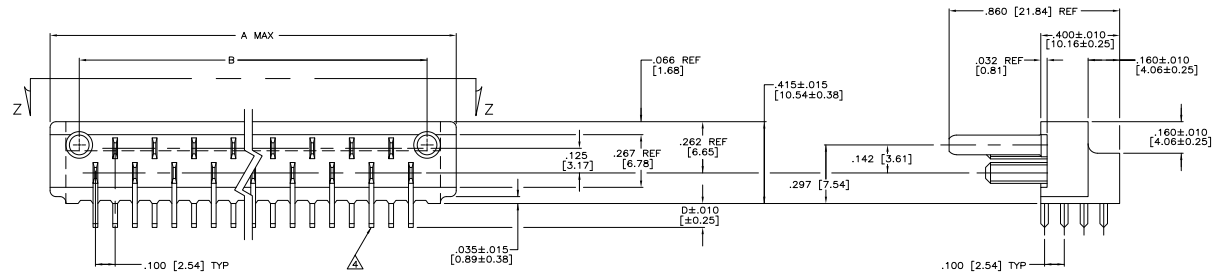


RECOMMENDED P.C. BOARD LAYOUT

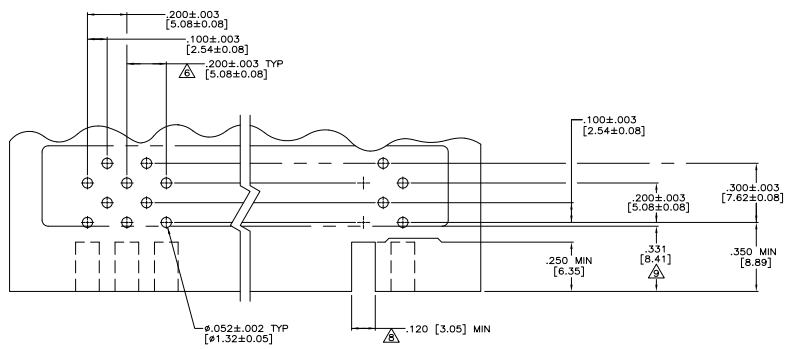
THIS DRAWING IS A CONTROLLED DOCUMENT.		DATE: 11-20-07	REV: 1
DESIGNED BY: J. J. JEFFERY	DATE: 11-20-07	REV: 1	BY: J. J. JEFFERY
CHECKED BY: J. J. JEFFERY	DATE: 11-20-07	REV: 1	BY: J. J. JEFFERY
APPROVED BY: J. J. JEFFERY	DATE: 11-20-07	REV: 1	BY: J. J. JEFFERY
CUSTOMER DRAWING		DATE: 11-20-07	REV: 1

THIS DRAWING IS UNPUBLISHED
 © 2008 BY TYS ELECTRONICS CORPORATION. ALL RIGHTS RESERVED.

REV	DATE	DESCRIPTION	BY	APP'D
DF	HO	SEE SHEET 1	-	-



VIEW Z-Z



RECOMMENDED P.C. BOARD LAYOUT

THIS DRAWING IS A CONTROLLED DOCUMENT.		DATE: 12-09-07	REV: 01
DRAWN BY: J. J. JEFFREY		DATE: 12-09-07	REV: 01
CHECKED BY: J. C. WARDNER		DATE: 12-09-07	REV: 01
APPROVED BY: J. C. WARDNER		DATE: 12-09-07	REV: 01
CUSTOMER: TYS Electronics Corporation		DATE: 12-09-07	REV: 01
PROJECT: ASSEMBLY, AMP BLADE		DATE: 12-09-07	REV: 01
PART: TAB HOUSING		DATE: 12-09-07	REV: 01
DRAWING NO: A100779		DATE: 12-09-07	REV: 01
DRAWING NO: G=582152		DATE: 12-09-07	REV: 01
CUSTOMER DRAWING		DATE: 12-09-07	REV: 01

THE DRAWING IS UNCLASSIFIED		NECESSARY FOR PRODUCTION		REV. AUTH.	
①	②	③	④	⑤	⑥
CONTROL NO.	BY TYPE/ELECTRONICS OPERATIONS	ALL RIGHTS RESERVED			

REVISIONS					
REV.	DATE	BY	DESCRIPTION	APPROVED	APP'D
1	-	-	SEE SHEET 1	-	-

WITH MOUNTING HOLES

WITHOUT MOUNTING HOLES

PART NO.	NO OF CONT.	A	B	C	D	E	IPC. BD. THICKNESS	NOTE	MARKING
3-582152-1	17	2.390	1.764	2.130	.120	.265	.0625	-	-
3-582152-2	23	2.990	2.364	2.730	.120	.265	.0625	-	-
3-582152-3	29	3.590	2.964	3.330	.120	.265	.0625	-	-
3-582152-4	35	4.190	3.564	3.930	.120	.265	.0625	-	-
3-582152-5	41	4.790	4.164	4.530	.120	.265	.0625	-	-
3-582308-1	47	5.623	4.764	5.363	.120	.381	.0625	-	-
4-582308-1	47	5.623	4.764	5.363	.120	.381	.0625	-	-
4-582152-1	17	2.390	1.764	2.130	.120	.265	.0625	-	-
4-582152-3	29	3.590	2.964	3.330	.120	.265	.0625	-	-
5-582843-0	23	2.990	2.364	2.730	.120	.265	.0625	-	-
5-582843-1	47	5.623	4.764	5.363	.120	.381	.0625	-	-
582843-2	17	2.390	1.764	2.130	.120	.265	.0625	M 21097/ 14-01	-
582843-3	23	2.990	2.364	2.730	.120	.265	.0625	M 21097/ 14-04	-
582843-4	29	3.590	2.964	3.330	.120	.265	.0625	M 21097/ 14-07	-
582843-5	35	4.190	3.564	3.930	.120	.265	.0625	M 21097/ 14-10	-
582843-6	41	4.790	4.164	4.530	.120	.265	.0625	M 21097/ 14-13	-
582843-7	47	5.623	4.764	5.363	.120	.381	.0625	M 21097/ 14-16	-
582907-1	29	3.590	2.964	3.330	.120	.265	.0625	-	-
6-582152-1	17	2.390	1.764	2.130	.152	.265	.0937	-	-
6-582152-2	23	2.990	2.364	2.730	.152	.265	.0937	-	-
6-582152-3	29	3.590	2.964	3.330	.152	.265	.0937	-	-
6-582152-4	35	4.190	3.564	3.930	.152	.265	.0937	-	-
6-582152-5	41	4.790	4.164	4.530	.152	.265	.0937	-	-
6-582308-1	47	5.623	4.764	5.363	.152	.381	.0937	-	-
7-582308-1	47	5.623	4.764	5.363	.152	.381	.0937	-	-
1-582843-4	17	2.390	1.764	2.130	.152	.265	.0937	M 21097/ 14-02	-
582843-1	23	2.990	2.364	2.730	.152	.265	.0937	M 21097/ 14-05	-
1-582843-5	29	3.590	2.964	3.330	.152	.265	.0937	M 21097/ 14-08	-
1-582843-6	35	4.190	3.564	3.930	.152	.265	.0937	M 21097/ 14-11	-
1-582843-7	41	4.790	4.164	4.530	.152	.265	.0937	M 21097/ 14-14	-
1-582843-8	47	5.623	4.764	5.363	.152	.381	.0937	M 21097/ 14-17	-
9-582152-1	17	2.390	1.764	2.130	.183	.265	.125	-	-
9-582152-2	23	2.990	2.364	2.730	.183	.265	.125	-	-
9-582152-3	29	3.590	2.964	3.330	.183	.265	.125	-	-
9-582152-4	35	4.190	3.564	3.930	.183	.265	.125	-	-
9-582152-5	41	4.790	4.164	4.530	.183	.265	.125	-	-
9-582308-1	47	5.623	4.764	5.363	.183	.381	.125	-	-
2-582843-5	17	2.390	1.764	2.130	.183	.265	.125	M 21097/ 14-03	-
2-582843-6	23	2.990	2.364	2.730	.183	.265	.125	M 21097/ 14-06	-
2-582843-7	29	3.590	2.964	3.330	.183	.265	.125	M 21097/ 14-09	-
2-582843-8	35	4.190	3.564	3.930	.183	.265	.125	M 21097/ 14-12	-
2-582843-9	41	4.790	4.164	4.530	.183	.265	.125	M 21097/ 14-15	-
3-582843-0	47	5.623	4.764	5.363	.183	.381	.125	M 21097/ 14-18	-

PART NO.	NO OF CONT.	A	B	C	D	E	IPC. BD. THICKNESS	NOTE	MARKING
3-582152-6	17	2.070	1.764	-	.120	-	.0625	-	-
3-582152-7	23	2.670	2.364	-	.120	-	.0625	-	-
3-582152-8	29	3.270	2.964	-	.120	-	.0625	-	-
3-582152-9	35	3.870	3.564	-	.120	-	.0625	-	-
3-582152-0	41	4.470	4.164	-	.120	-	.0625	-	-
3-582308-2	47	5.070	4.764	-	.120	-	.0625	-	-
2-582152-9	35	3.870	3.564	-	.120	-	.0625	-	-
582152-1	23	2.670	2.364	-	.120	-	.0625	-	-
582152-2	47	5.070	4.764	-	.120	-	.0625	-	-
582152-3	35	3.870	3.564	-	.120	-	.0625	-	-
582843-8	17	2.070	1.764	-	.120	-	.0625	-	M 21097/15-01
582843-9	23	2.670	2.364	-	.120	-	.0625	-	M 21097/15-04
1-582843-0	29	3.270	2.964	-	.120	-	.0625	-	M 21097/15-07
1-582843-1	35	3.870	3.564	-	.120	-	.0625	-	M 21097/15-10
1-582843-2	41	4.470	4.164	-	.120	-	.0625	-	M 21097/15-13
1-582843-3	47	5.070	4.764	-	.120	-	.0625	-	M 21097/15-16
6-582152-6	17	2.070	1.764	-	.152	-	.0937	-	-
6-582152-7	23	2.670	2.364	-	.152	-	.0937	-	-
6-582152-8	29	3.270	2.964	-	.152	-	.0937	-	-
6-582152-9	35	3.870	3.564	-	.152	-	.0937	-	-
6-582152-0	41	4.470	4.164	-	.152	-	.0937	-	-
6-582308-2	47	5.070	4.764	-	.152	-	.0937	-	-
1-582843-9	17	2.070	1.764	-	.152	-	.0937	-	M 21097/15-02
2-582843-0	23	2.670	2.364	-	.152	-	.0937	-	M 21097/15-05
2-582843-1	29	3.270	2.964	-	.152	-	.0937	-	M 21097/15-08
2-582843-2	35	3.870	3.564	-	.152	-	.0937	-	M 21097/15-11
2-582843-3	41	4.470	4.164	-	.152	-	.0937	-	M 21097/15-14
2-582843-4	47	5.070	4.764	-	.152	-	.0937	-	M 21097/15-17
9-582152-6	17	2.070	1.764	-	.183	-	.125	-	-
9-582152-7	23	2.670	2.364	-	.183	-	.125	-	-
9-582152-8	29	3.270	2.964	-	.183	-	.125	-	-
9-582152-9	35	3.870	3.564	-	.183	-	.125	-	-
9-582152-0	41	4.470	4.164	-	.183	-	.125	-	-
9-582308-2	47	5.070	4.764	-	.183	-	.125	-	-
3-582843-1	17	2.070	1.764	-	.183	-	.125	-	M 21097/15-03
3-582843-2	23	2.670	2.364	-	.183	-	.125	-	M 21097/15-06
3-582843-3	29	3.270	2.964	-	.183	-	.125	-	M 21097/15-09
3-582843-4	35	3.870	3.564	-	.183	-	.125	-	M 21097/15-12
3-582843-5	41	4.470	4.164	-	.183	-	.125	-	M 21097/15-15
3-582843-6	47	5.070	4.764	-	.183	-	.125	-	M 21097/15-18

1. TAB-HOUSING ASSEMBLY MATES WITH AMP P/N 3-582151 SERIES.
 2. BLADE CENTER LINE TO BE MEASURED FROM THE CENTER LINE FORMED BY THE ALIGNMENT TINGS & AS LONG AS THE BLADES FALL WITHIN TOLERANCES INDICATED, THE ALLOWABLE WARPAGE IS INDEPENDENT OF THE BLADES & BECOMES A MEASUREMENT OF THE OUTSIDE SURFACE OF THE TAB-HOUSING & DOES NOT EFFECT THE MATING OF THIS TAB-HOUSING WITH 582151.
- ⚠ MOUNTING HOLES.
 - ⚠ POST TO BE SOLDER DIPPED.
 - ⚠ CONN. MUST MEET REQUIREMENTS OF AMP SPEC 109-11-1.
 - ⚠ CONTACT MATL.; GILDING METAL. GOLD OVER NICKEL.
 - ⚠ TOLERANCE NON CUMULATIVE.
 - ⚠ TAB-HOUSING MATL.; DIALYL PHTHALATE, GLASS FILLED PER MIL-14, TYPE S.D.C.-F.
 - ⚠ COLOR; GREEN.
 - ⚠ CUT OUT FOR KEYING BOSS, LOCATED WHERE RECD. (OPTIONAL)
 - ⚠ FROM EDGE OF P.C. BOARD TO FACE OF TAB-HOUSING.
 - ⚠ TYCO ELECTRONICS P/N NOT TO BE MARKED ON PART.
 - ⚠ AMP, DATE CODE, AND CUSTOMER PART NO. MARKED PER TABLE.
 - ⚠ CONTACT FINISH; .0001 THK. GOLD, OVER NICKEL.
 - ⚠ TAB-HOUSING MATL.; COLOR; GREY.
 - ⚠ AMP, TYCO ELECTRONICS PART NO. AND DATE CODE MARKED PER TABLE IN THIS APPROX AREA.
 - ⚠ CUSTOMER PART NO. MARKED PER TABLE IN THIS APPROX AREA.

THIS DRAWING IS A CONTROLLED DOCUMENT.		13-SEP-83		Tyco Electronics Corporation	
REVISIONS		DATE		REV.	
1	SEE SHEET 1	13-SEP-83	1	ASSEMBLY, AMP BLADE TAB HOUSING	
CUSTOMER DRAWING				DATE	REV.
				100779	582152
				4.1	3 3