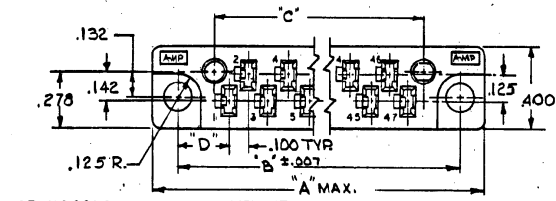
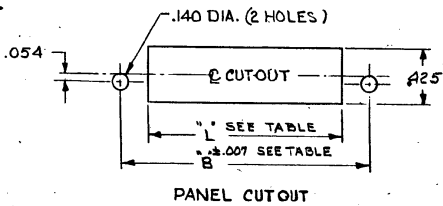
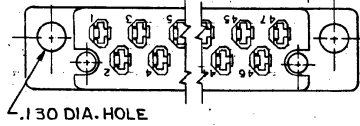
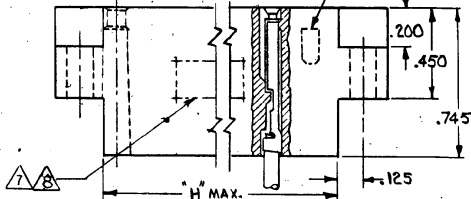


REVISIONS				
ZONE	LTN	DESCRIPTION	DATE	APPROVER
AJ1		REVISED PER ECO-11-005294	12APR11	HMR



SEE 582200 FOR PARTS WITH KEYING BOSSES



NO CAVITIES	"A" MAX.	"B"	"C"	"L"	"H" MAX.	"D"
17	2.390	2.130	1.764	1.910	1.897	
23	2.990	2.730	2.364	2.510	2.497	
29	3.590	3.330	2.964	3.110	3.097	.265
35	4.190	3.930	3.564	3.710	3.697	
41	4.790	4.530	4.164	4.310	4.297	
47	5.623	5.363	4.764	5.143	5.130	.381

NOTE:

1- THE CAVITY CENTERLINES ARE MEASURED FROM THE CENTERLINE OF THE ALIGNMENT PIN HOLES AND AS LONG AS THE CAVITIES FALL WITHIN THE TOLERANCES INDICATED THE ALLOWABLE WARPAGE IS INDEPENDENT OF THE CAVITIES AND BECOMES A MEASUREMENT OF THE OUT SIDE SURFACE OF THE BLOCK. IT DOES NOT AFFECT THE MATING OF THIS BLOCK WITH 582152.

2- THESE BLOCKS MATE WITH PART 582152

3- FOR SUPPLEMENTAL SPECIFICATIONS SEE E. S. 8-1-3

△ (WHERE SPECIFIED) AMP PART NO. NOT STAMPED ON PART. DATE CODE WILL BE STAMPED ON PART.

△ CUSTOMER PART NO. TO BE STAMPED IN ADDITION TO AMP PART NO.

△ OBS PART NO.

△ AMP PART NUMBER AND DATE CODE MARKED APPROX THIS AREA EITHER SIDE.

HOUSING:

MATERIAL: DIALYL PHTHALATE

GLASS FILLED

PER: MIL-M-14F, TYPE S.D.G-F.

COLOR: GREEN (EXCEPT AS NOTED)

△ AMP PART NUMBER, DATE CODE AND MILITARY NUMBER MARKED APPROX THIS AREA.

OTHER THAN SPECIFIED		CONTRACT NO.		DATE	
FRAXIONS	OTHER THAN SPECIFIED			7-17-47	
MATERIAL	±.005 ± 15°			7-26-47	
HEAT TREAT				7-26-47	
FINISH				7-26-47	
SEE CALL-OUT		SEE CALL-OUT		SEE CALL-OUT	
MATERIAL: DIALYL PHTHALATE		MATERIAL: DIALYL PHTHALATE		MATERIAL: DIALYL PHTHALATE	
GLASS FILLED		GLASS FILLED		GLASS FILLED	
PER: MIL-M-14F, TYPE S.D.G-F.		PER: MIL-M-14F, TYPE S.D.G-F.		PER: MIL-M-14F, TYPE S.D.G-F.	
COLOR: GREEN (EXCEPT AS NOTED)		COLOR: GREEN (EXCEPT AS NOTED)		COLOR: GREEN (EXCEPT AS NOTED)	
AMP PART NUMBER, DATE CODE AND MILITARY NUMBER MARKED APPROX THIS AREA.		AMP PART NUMBER, DATE CODE AND MILITARY NUMBER MARKED APPROX THIS AREA.		AMP PART NUMBER, DATE CODE AND MILITARY NUMBER MARKED APPROX THIS AREA.	
SCALE 3-1		SCALE 3-1		SCALE 3-1	
C 00272		C 00272		C 00272	
582151		582151		582151	
SHEET 1 OF 2 SHTS.		SHEET 1 OF 2 SHTS.		SHEET 1 OF 2 SHTS.	

STE TE Connectivity

AMP BLADE RECEPTACLE HOUSING

CUSTOMER DRAWING

CUST. 582151

DF 7/10/47

REVISIONS			
REV#	DATE	DESCRIPTION	APPROVED
1		SEE SHEET 1	

PART NO.	NO. CAVITIES	MARKING
3-582151-1	17	△
3-582151-2	23	△
3-582151-3	29	△
3-582151-4	35	△
3-582151-5	41	△
3-582307-1	47	△
2-582151-4	35	GRAY HOUSING △
4-582151-5	17	STAMP CUST. PART NO. △ △
4-582151-6	23	STAMP CUST. PART NO. △ △
4-582151-7	29	STAMP CUST. PART NO. △
4-582151-8	35	STAMP CUST. PART NO. △ △
4-582151-9	41	STAMP CUST. PART NO. △ △
1-582307-3	47	STAMP CUST. PART NO. △
5-582151-1	17	M 21097/13-01 △
5-582151-2	23	M 21097/13-02 △
5-582151-3	29	M 21097/13-03 △
5-582151-4	35	M 21097/13-04 △
5-582151-5	41	M 21097/13-05 △
5-582307-1	47	M 21097/13-06 △
4-582151-2	23	STAMP CUST. PART NO. △ △
4-582151-3	29	STAMP CUST. PART NO. △ △

USE PER OTHERWISE SPECIFIED DIMENSIONS ARE IN INCHES TOLERANCES ON DECIMALS		CONTRACT NO. <i>Handwritten</i>		<b>STE</b> TE Connectivity	
PARTS TO BE DRAWN	PARTS TO BE ASSEMBLED	DATE 7-17-67	NAME <i>Handwritten</i>	AMP BLADE RECEPTACLE HOUSING	
DRAWN BY <i>Handwritten</i>	CHECKED BY <i>Handwritten</i>	DATE 7-17-67	NAME <i>Handwritten</i>	C 00779 582151	
OTHER APPR. <i>Handwritten</i>	DATE 7-17-67	SCALE 1:1	SHEET NO. 2 OF 2 SHEETS	CUSTOMER DRAWING	

CUST-582151

10/10/67