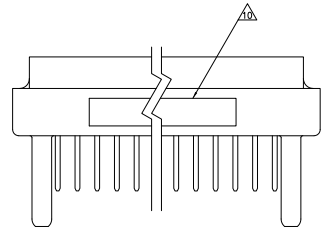
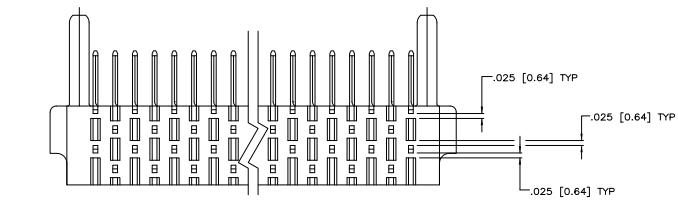
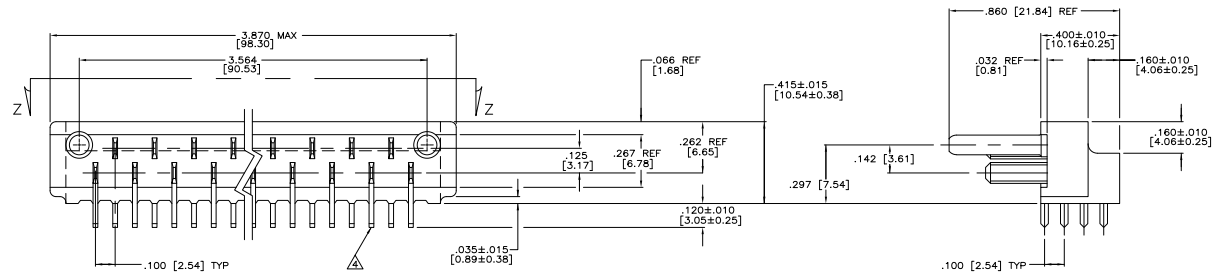
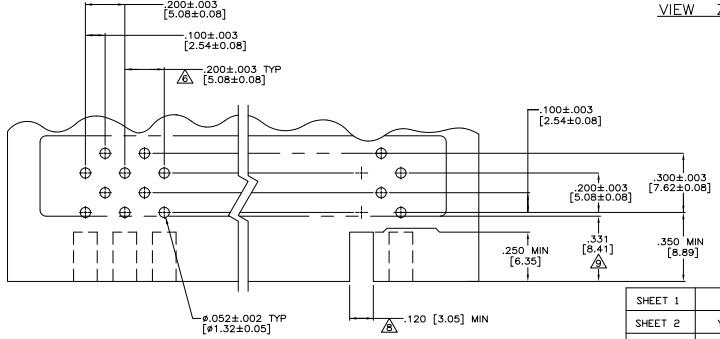


REV	DATE	DESCRIPTION	BY	APP'D
D	REV PER ECD 08-014406			



VIEW Z-Z



RECOMMENDED P.C. BOARD LAYOUT

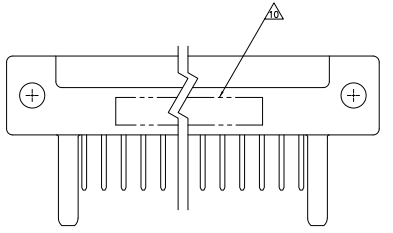
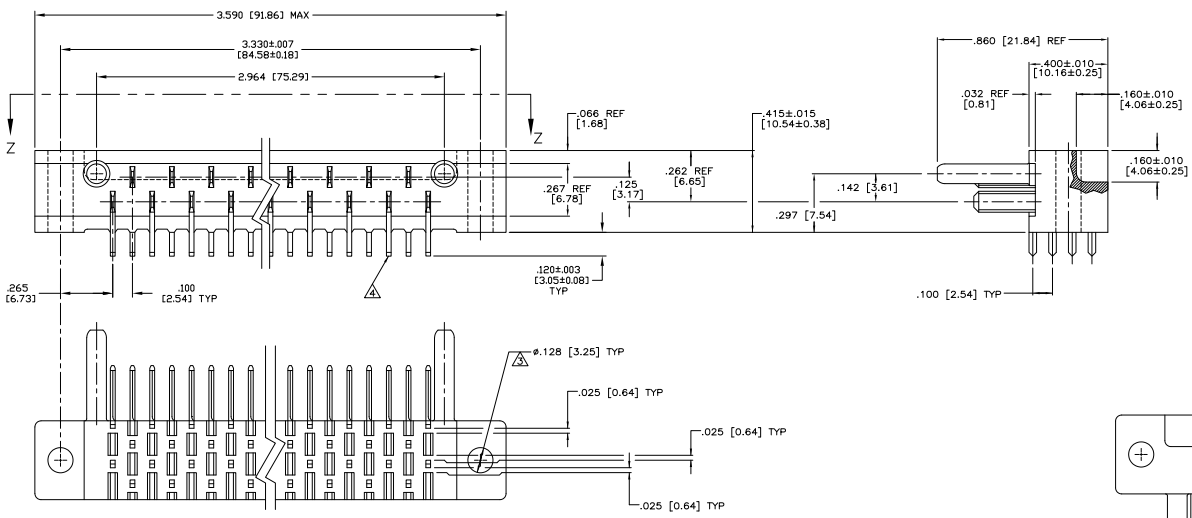
- TAB-HOUSING ASSEMBLY MATES WITH AMP P/N 3-582151 SERIES.
 - BLADE CENTER LINE TO BE MEASURED FROM THE CENTER LINE FORMED BY THE ALIGNMENT PINS & AS LONG AS THE BLADES FALL WITHIN TOLERANCES INDICATED, THE ALLOWABLE WARPAGE IS INDEPENDENT OF THE BLADES & BECOMES A MEASUREMENT OF THE OUTSIDE SURFACE OF THE TAB-HOUSING & DOES NOT AFFECT THE MATING OF THIS TAB-HOUSING WITH 582151.
- ▲ CONTACT POSTS SOLDER DIPPED IN LEAD FREE SOLDER. CONNECTOR MUST MEET REQUIREMENTS OF JEDEC JESD22-B102 EXCEPT STEAM AGE 4 HRS AND 270°C SOLDER POT TEMP.
 - ▲ CONTACT MATL.; GILDING METAL. GOLD OVER NICKEL.
 - ▲ TOLERANCE NON CUMULATIVE.
 - ▲ TAB-HOUSING MATL.; DIALLYL PHTHALATE, GLASS FILLED PER MIL-M-14, TYPE S.O.C.-F.
 - ▲ COLOR; GREEN.
 - ▲ CUT OUT FOR KEYING BOSS, LOCATED WHERE REQD. (OPTIONAL)
 - ▲ FROM EDGE OF P.C. BOARD TO FACE OF TAB-HOUSING.
 - ▲ TYCO, TYCO PART NO. AND DATE CODE MARKED PER TABLE IN THIS APPROX AREA.
 - ▲ CONTACT FINISH; .0001 THK. GOLD, OVER NICKEL.

SHEET	NO	THICKNESS	NO. OF CONTACTS	PART NO.
SHEET 1	NO	.062 (1.57)	35	3-5582152-9
SHEET 2	YES	.062 (1.57)	17	3-5582152-1
SHEET 3	YES	.062 (1.57)	29	3-5582152-3

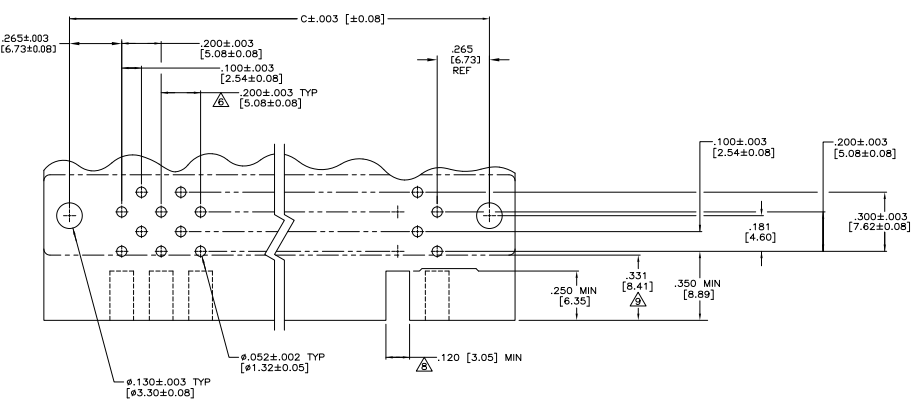
THIS DRAWING IS A CONTROLLED DOCUMENT.		DATE: 8-18-09		Tyco Electronics Corporation Harrisburg, PA 17105-3608	
DESIGNED BY: J. MILLER	DATE: 8-18-09	ASSEMBLY: AMP BLADE	REVISION: 1	DATE: 8-18-09	BY: J. MILLER
CHECKED BY: J. MILLER	DATE: 8-18-09	PART: TAB HOUSING	REVISION: 1	DATE: 8-18-09	BY: J. MILLER
DATE: 8-18-09	BY: J. MILLER	DATE: 8-18-09	BY: J. MILLER	DATE: 8-18-09	BY: J. MILLER
DATE: 8-18-09	BY: J. MILLER	DATE: 8-18-09	BY: J. MILLER	DATE: 8-18-09	BY: J. MILLER

THIS DRAWING IS UNPUBLISHED
 © 2008 Tyco Electronics Corporation. ALL RIGHTS RESERVED.

REVISES		DATE	BY	APP'D



VIEW Z-Z



RECOMMENDED P.C. BOARD LAYOUT

THIS DRAWING IS A CONTROLLED DOCUMENT.		DATE: 8-18-08	REV: 1	REVISED BY: J. MILLER	DATE: 8-18-08	REVISED BY: J. MILLER	DATE: 8-18-08	REVISED BY: J. MILLER
DESIGNED BY: J. MILLER	CHECKED BY: J. MILLER	DATE: 8-18-08	REVISED BY: J. MILLER	DATE: 8-18-08	REVISED BY: J. MILLER	DATE: 8-18-08	REVISED BY: J. MILLER	DATE: 8-18-08
DATE: 8-18-08	REVISED BY: J. MILLER	DATE: 8-18-08	REVISED BY: J. MILLER	DATE: 8-18-08	REVISED BY: J. MILLER	DATE: 8-18-08	REVISED BY: J. MILLER	DATE: 8-18-08
DATE: 8-18-08	REVISED BY: J. MILLER	DATE: 8-18-08	REVISED BY: J. MILLER	DATE: 8-18-08	REVISED BY: J. MILLER	DATE: 8-18-08	REVISED BY: J. MILLER	DATE: 8-18-08