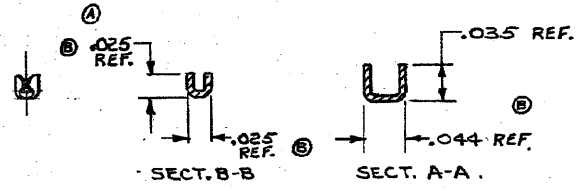
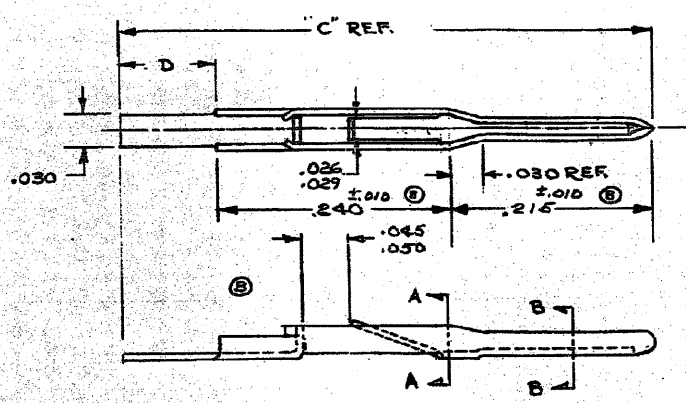


AMP INCORPORATED. ALL RIGHTS RESERVED. AMP PRODUCTS COVERED BY PATENTS AND/OR PATENTS PENDING.

ZONE	LTG	DESCRIPTION	DATE	APPROVED
A		REVISED	Y-755	M.S. 2.H
A1		REVISED	2622	8-6-70 M.S. 2.H
B		REVISED	3131	8-15-71 M.S. 2.F
C		REVISED FINISH	7225 m/s	2-26-81 K0
D		REV PER 0600-6466-97	II	10-98



① .00003 GOLD OVER .00005 NICKEL IN CONTACT AREA, TIN-LEAD OVER NICKEL IN TAIL AREA
 ② .00005 GOLD OVER .00005 NICKEL IN CONTACT AREA, TIN-LEAD OVER NICKEL IN TAIL AREA

①	202947-3	.140	.595	BRASS	△
085	202947-2	.140	.595	BRASS	△
	PART NO.	"D"	"C"	MATERIAL	FINISH

UNLESS OTHERWISE SPECIFIED DIMS. ARE IN INCHES. TOLERANCES ARE DECIMALS .005	CONTRACT NO.	AMP		AMP INCORPORATED HARRISBURG, PENNSYLVANIA
	3-25-66	CONTACT PIN		
MATERIAL	DATE	CODE IDENT. NO.	NUMBER	
SEE TABLE	4/4/66	B 00779	202947	
LOC. FOR IDENT.	HEAT TREAT	SCALE	BY	CALC. ACTUAL SHEET
DF	FO	10-1		
FINISH	SEE TABLE	CUSTOMER DRAWING		