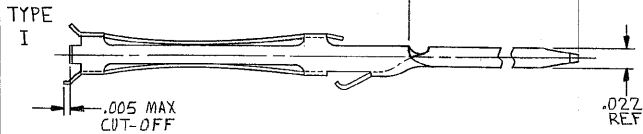
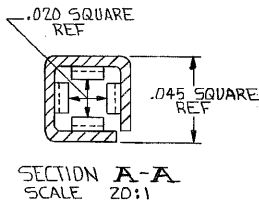
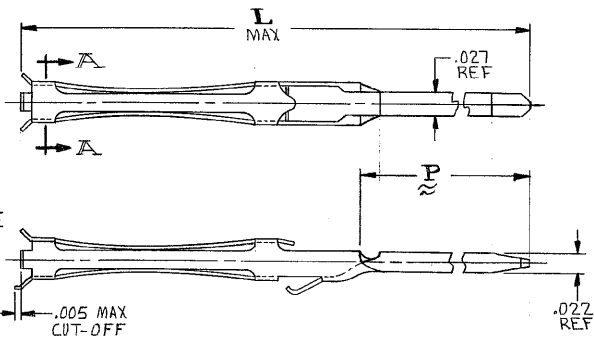


MADE IN AMERICAN PROJECTION

© 19 BY AMP INCORPORATED. ALL RIGHTS RESERVED. AMP PRODUCTS COVERED BY PATENTS AND/OR PATENTS PENDING.



TYPE II - SAME AS TYPE I EXCEPT AS SHOWN

- 1. FINISH: .00003 GOLD OVER .00003 NICKEL IN CONTACT AREA, .0001 TIN-LEAD OVER NICKEL IN TAIL AREA.
- 2. POST DIAGONAL, .034 MAX
- 3. FINISH: .00005 GOLD OVER .00003 NICKEL.
- 4. FINISH: .00003 GOLD OVER .00003 NICKEL

REVISIONS				
ZONE	LTR	DESCRIPTION	DATE	APPROVED
	0	REFLECTED IN: 5087-595 cust SW	6/29/72	
	01	ADDED 2--0	3.6.72 m.s.	DR
	02	ADDED 2--2 To 3--0	3.9.72 m.s.	DR
	A	REVISED P DIM.	5.9.72 m.s.	2.25.72
	B	REVISED	7.23.72 m.s.	2.26.81
	C	ADD 3--2, 3--4, 3--7; AB-0987	ab	7.23.85 EAM
	D	REV 0600-5631-96 TT		10-97
	E	REV 0600-5641-96		10-97 EAM

	3-583812-7	II	△	1.240	.870
	3--4	II	△	1.115	.745
08S	3--2	II	△	.955	.585
	3--0	I	△	1.115	.745
OBSOLETE	2--8	I	↑	.955	.585
	2--6	I	↑	.795	.425
	2--4	II	↑	1.115	.745
	2--2	II	↑	.795	.425
	2-583812-0	II	△	.955	.585
	1-583812-8	II	△	1.115	.745
	1-583812-5	II	↑	.955	.585
	1-583812-2	II	↑	.795	.425
	583812-9	I	↑	1.115	.745
	583812-6	I	↑	.955	.585
	583812-3	I	↑	.795	.425
	PART NO	TYPE	FINISH	L	P

OBSOLETE

UNLESS OTHERWISE SPECIFIED DIMENSIONS ARE IN INCHES TOLERANCES ON: DECIMALS ± .005 ANGLES ± .4	CONTRACT NO.		AMP INCORPORATED HARRISBURG, PENNSYLVANIA
	DR: <i>W. W. ...</i> 5/16/72	NAME	
	CHK: <i>...</i> 6/29/72	SNAP-IN BOX CONTACT	
	APPR: <i>...</i> 6/29/72	SIZE CODE IDENT NO. NUMBER	
MATERIAL BERYLLIUM COPPER	REVISIONS	SCALE 10:1	SHEET 583812
OTHER APPD	CUSTOMER DRAWING		