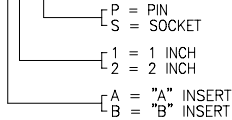


NOTES:

1. PART NUMBER VARIABLE:

MTC100-JXX-X34



2. MATERIAL:

- A) PIN/SOCKET INSERT HIGH GRADE POLYARYLENE THERMOPLASTIC.
- B) PIN CONTACT COPPER ALLOY PER QQ-B-613 OR QQ-C-502.
- C) SOCKET CONTACT COPPER ALLOY PER QQ-B-750
- D) INTERFACIAL SEAL SILICONE ELASTOMER PER ZZ-R-765.
- E) SolderSleeve® REFER TO RAYCHEM DRAWING CTA-0065 FOR DETAILS

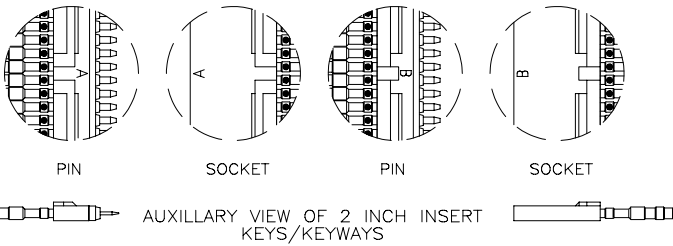
3. FINISH:

- A) PIN/SOCKET INSERT AS MOLDED.
- B) PIN/SOCKET CONTACT GOLD PLATE PER MIL-G-45204, CLASS 1.
- C) CONTACT TAIL SOLDER COATED PER QQ-S-571 (Sn96)

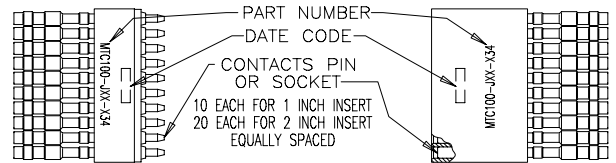
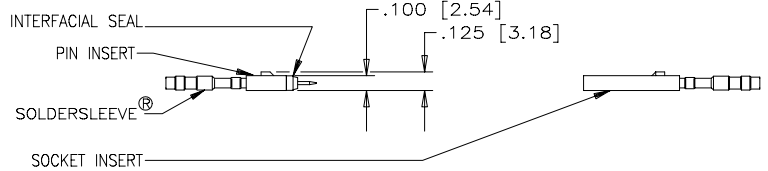
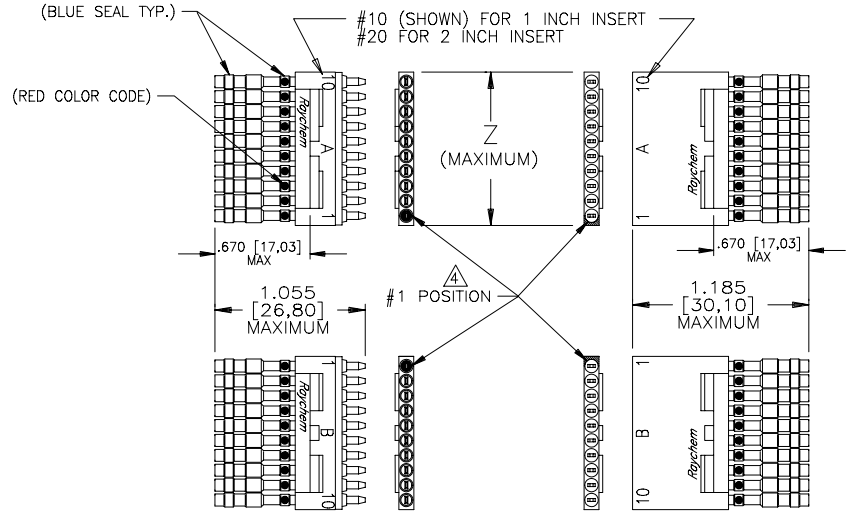
▲ NUMBER ONE POSITION IS MARKED AS SHOWN IN CONTRASTING COLOR ON INTERFACE.

5. THIS INSERT MEETS THE REQUIREMENTS OF RAYCHEM SPECIFICATION C-6111.

SIZE	WEIGHT MAXIMUM		DIM. "Z"
	LBS.	GRAMS	
1 INCH INSERT	PIN .0047	2.132	1.05 [26,7]
	SOC. .0054	2.449	
2 INCH INSERT	PIN .0090	4.082	2.05 [52,1]
	SOC. .0109	4.944	



REVISIONS			
LTR	DESCRIPTION	DATE	APPROVED
N/C	INITIAL RELEASE PER ECN T-13741	90 FEB 5	J.B.



SPECIFICATION CONTROL DRAWING © Raychem Corporation 1989

UNLESS OTHERWISE SPECIFIED DIMENSIONS ARE IN INCHES. METRIC DIMENSIONS ARE IN BRACKETS.	DRAWN	CERDAN	891218	Raychem <small>RAYCHEM CORPORATION 300 CONSTITUTION DRIVE MENLO PARK, CALIFORNIA 94025</small>					
	CHECKED								
	APPROVED	J.B.	90JAN22						
	APPROVED								
DECIMALS .XXX ± .005	.13 mm	TITLE							
.XX ±		PRE-ASSEMBLED SOLDERSLLEEVE INSERT, 150°C OPERATING TEMPERATURE MTC100 SERIES							
ANGLES .X ±	CAD NAME		005245-1	SIZE	CODE IDENT. NO.	DWG. NO.	MTC100-JXX-X34	REV	N/C
WEIGHT: MAXIMUM SEE TABULATION	THIRD ANGLE PROJECTION	DO NOT SCALE THIS DRAWING			SHEET 1 OF 1				

DWG. NO. MTC100-JXX-X34

A

D

C

B

A

4

3

2

1

4

3

2

1