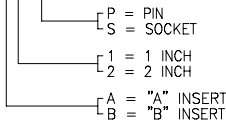


NOTES:

1. PART NUMBER VARIABLE:

MTC100-JXX-X11



2. MATERIAL:

- A) PIN/SOCKET INSERT HIGH GRADE POLYARYLENE THERMOPLASTIC.
- B) PIN CONTACT COPPER ALLOY PER QQ-B-613 OR QQ-C-502.
- C) SOCKET CONTACT COPPER ALLOY PER QQ-B-750.
- D) INTERFACIAL SEAL SILICONE ELASTOMER PER ZZ-R-765.

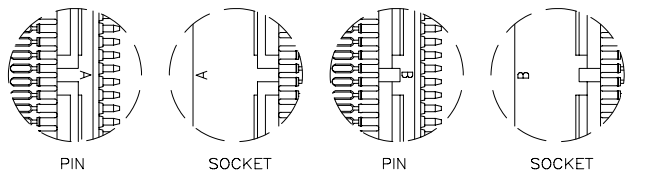
3. FINISH:

- A) PIN/SOCKET INSERT AS MOLDED.
- B) PIN/SOCKET CONTACT GOLD PLATE PER MIL-G-45204, CLASS 1.
- C) CONTACT TAIL SOLDER COATED PER QQ-S-571 (Sn63).

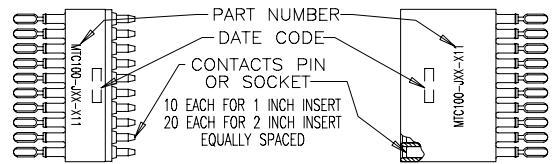
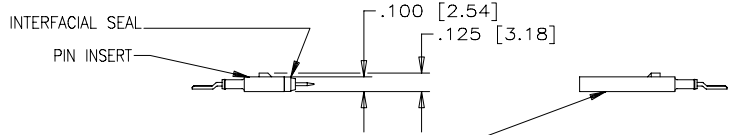
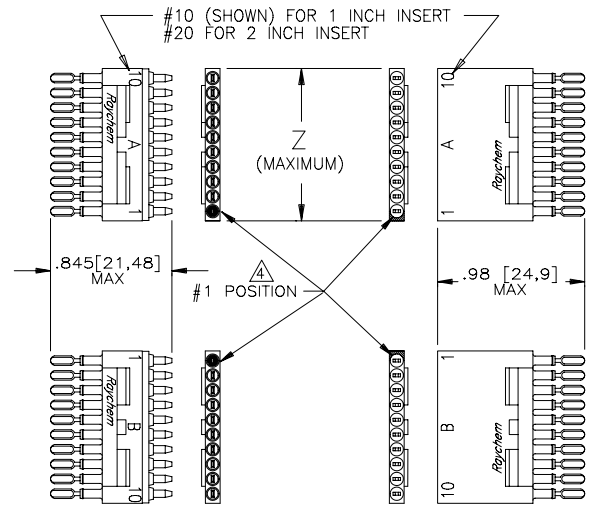
4. NUMBER ONE POSITION IS MARKED AS SHOWN IN CONTRASTING COLOR ON INTERFACE.

5. THIS INSERT MEETS THE REQUIREMENTS OF RAYCHEM SPECIFICATION C-6111.

SIZE		WEIGHT MAXIMUM		DIM. "Z"
		LBS.	GRAMS	
1 INCH INSERT	PIN	.0038	1.724	1.05 [26.7]
	SOC.	.0044	1.996	
2 INCH INSERT	PIN	.0074	3.356	2.05 [52.1]
	SOC.	.0089	4.037	



REVISIONS			
LTR	DESCRIPTION	DATE	APPROVED
N/C	INITIAL RELEASE PER ECN T-		



SPECIFICATION CONTROL DRAWING © Raychem Corporation 1990

UNLESS OTHERWISE SPECIFIED DIMENSIONS ARE IN INCHES. METRIC DIMENSIONS ARE IN BRACKETS.	DRAWN	CERDAN	900110	Raychem RAYCHEM CORPORATION 300 CONSTITUTION DRIVE MENLO PARK, CALIFORNIA 94025				
	CHECKED							
	APPROVED	J. BLAIR	88APR18	TITLE INSERT 20-26 AWG ROUND WIRE 125°C OPERATING TEMPERATURE MTC100 SERIES				
	APPROVED	J. CAMERON	88APR21					
DECIMALS .XXX ± .005 .XX ± ANGLES .X ±	.13 mm mm		CAD NAME	005250-1	SIZE	CODE IDENT. NO.	DWG. NO.	REV
WEIGHT: MAXIMUM SEE TABULATION	THIRD ANGLE PROJECTION	DO NOT SCALE THIS DRAWING		C	06090	MTC100-JXX-X11	N/C	

DWG. NO. MTC100-JXX-X11 SHEET

4

3

2

1

A

D

C

B

A

D

C

B

A