

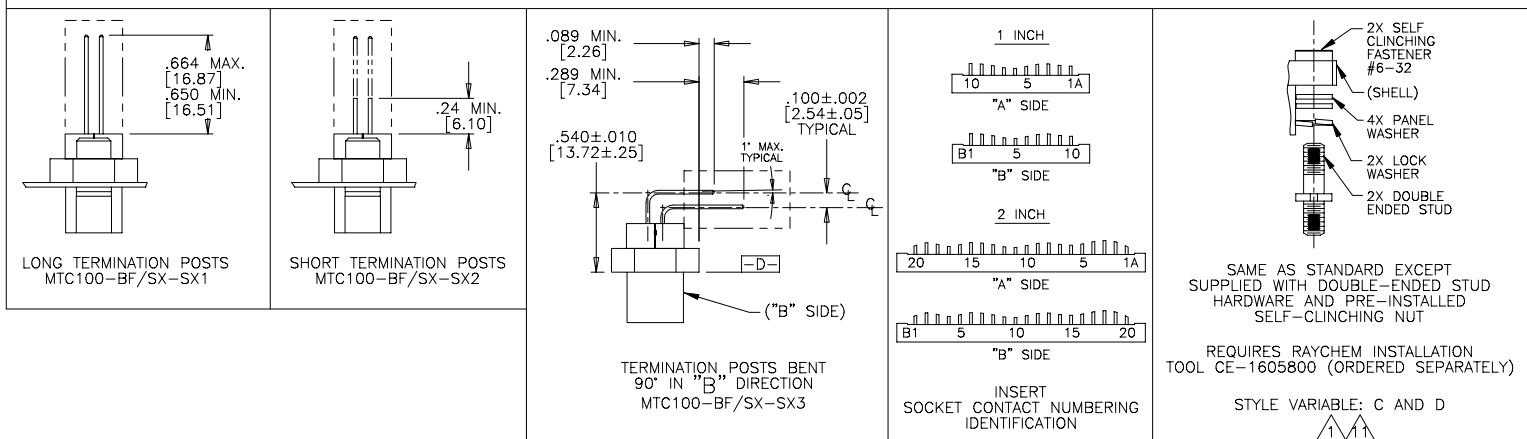
4

3

2

1

FIGURE 1
BASIC DESIGN VARIATIONS



SIZE C	CODE IDENT. NO. 06090	DWG. NO. MTC100-BXX-SXX-XXX	REV H
DO NOT SCALE THIS DRAWING		122751b.DWG	SHEET 2 OF 3

4

3

2

1

SPECIFICATIONS:

MATERIALS:

A. SHELL	ALUMINUM ALLOY PER QQ-A-591
B. ADAPTER SCREW	STAINLESS STEEL PER QQ-S-763, 300 SERIES
C. ADAPTER NUT	STAINLESS STEEL PER QQ-S-763, 300 SERIES
D. STANDARD PANEL GASKET EME PANEL GASKET	SILICONE ELASTOMER PER MIL-R-25988 CONDUCTIVE FLOROSILICONE
E. INSERT	HIGH GRADE THERMOPLASTIC DIELECTRIC
F. KEYING PIN	HIGH GRADE THERMOPLASTIC DIELECTRIC
G. SOCKET CONTACT	COPPER ALLOY 172 PER QQ-C-533
H. PANEL WASHER	STAINLESS STEEL PER QQ-S-763, 300 SERIES
J. KEYING PIN INSERT	HIGH GRADE THERMOPLASTIC DIELECTRIC

FINISH:

	APPLIES TO NICKEL PLATED CONNECTORS (STANDARD PLATING)	APPLIES TO CADMIUM PLATED CONNECTORS
A. SHELL	NICKEL PLATED PER MIL-C-26074 CLASS 3, GRADE B	CADMIUM PLATED PER QQ-P-416 OVER NICKEL UNDERPLATE
B. ADAPTER SCREW	PASSIVATED PER QQ-P-35	CADMIUM PLATED PER QQ-P-416
C. ADAPTER NUT	PASSIVATED PER QQ-P-35	CADMIUM PLATED PER QQ-P-416
D. PANEL WASHER	PASSIVATED PER QQ-P-35	CADMIUM PLATED PER QQ-P-416
E. SOCKET CONTACT	ENGAGING END - GOLD PLATED PER MIL-G-45204 TYPE 1, GRADE C, CLASS 1	

DESIGN AND CONSTRUCTION:

THE CONNECTORS SPECIFIED HEREIN ARE PANEL MOUNTED RECEPTACLES WITH FIXED (NON-REMOVABLE) SOCKET INSERTS AND CONTACTS. THE CONNECTOR IS WITHOUT PROVISIONS FOR CABLE CLAMPS OR TERMINATION SEALS.

PERFORMANCE:

THE APPLICABLE RAYCHEM SPECIFICATION FOR THIS PART IS C6111. THIS PART IS NOT QUALIFIED TO C6111.

HUMIDITY
ALTITUDE IMMERSION
ALTITUDE - LOW TEMPERATURE
FLUID IMMERSION

THE CONNECTOR TERMINATION END MUST BE SUITABLY PROTECTED FOR TESTING OR APPLICATION IN ANY OF THESE ENVIRONMENTS.

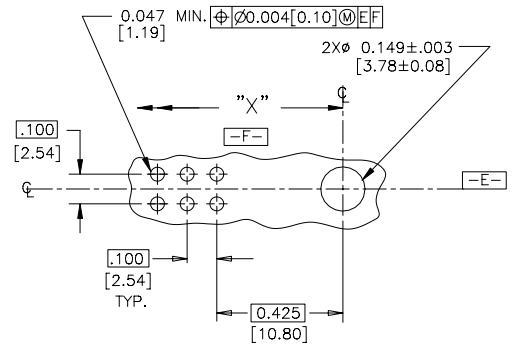


FIGURE 3
RECOMMENDED HOLE PATTERN AND SIZE FOR PRINTED CIRCUIT BOARDS

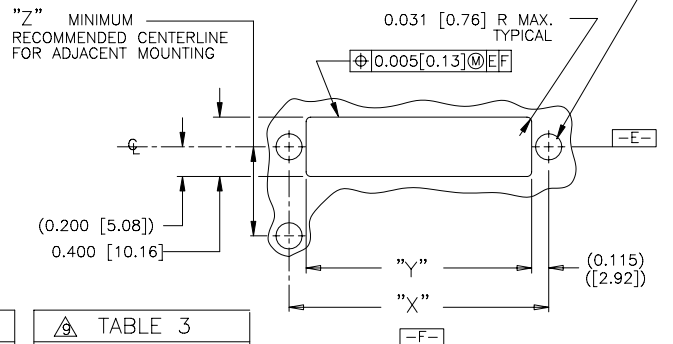


FIGURE 4
RECOMMENDED PANEL CUT-OUT

CONNECTOR SIZE	"A"	"B"	"C"	"X"	"Y"	"Z"
1 INCH	1.750 [44.45]	2.06 [52.3]	1.234 [31.34]	1.750 [44.45]	1.520 [38.61]	0.600 [15.24]
2 INCH	2.750 [69.85]	3.06 [77.7]	2.234 [56.74]	2.750 [69.85]	2.520 [64.00]	0.600 [15.24]

PANEL THICKNESS	NUMBER OF PANEL WASHERS FOR EACH FASTENER
0.031/0.036 [0.8]/[0.9]	2
0.062/0.067 [1.5]/[1.7]	1
0.93/0.097 [2.3]/[2.4]	0

WEIGHT lbs.[gr.] MAX.	
1 INCH CONNECTOR	.049 [22.33]
2 INCH CONNECTOR	.068 [30.82]

SIZE C	CODE IDENT. NO. 06090	DWG. NO. MTC100-BXX-SXX-XXX	REV H
DO NOT SCALE THIS DRAWING		T22751e.DWG	SHEET 3 OF 3

DWG NO. MTC100-BXX-SXX-XXX SHEET 3