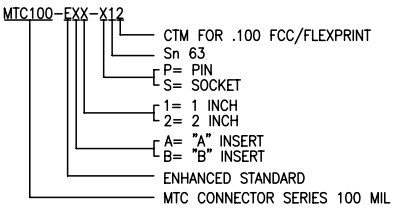


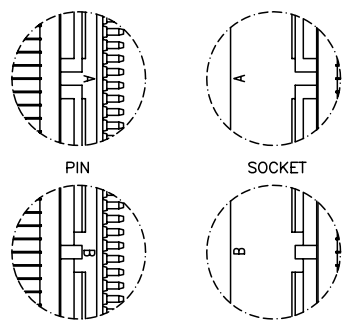
NOTES:  
1. PART NUMBER VARIABLE:



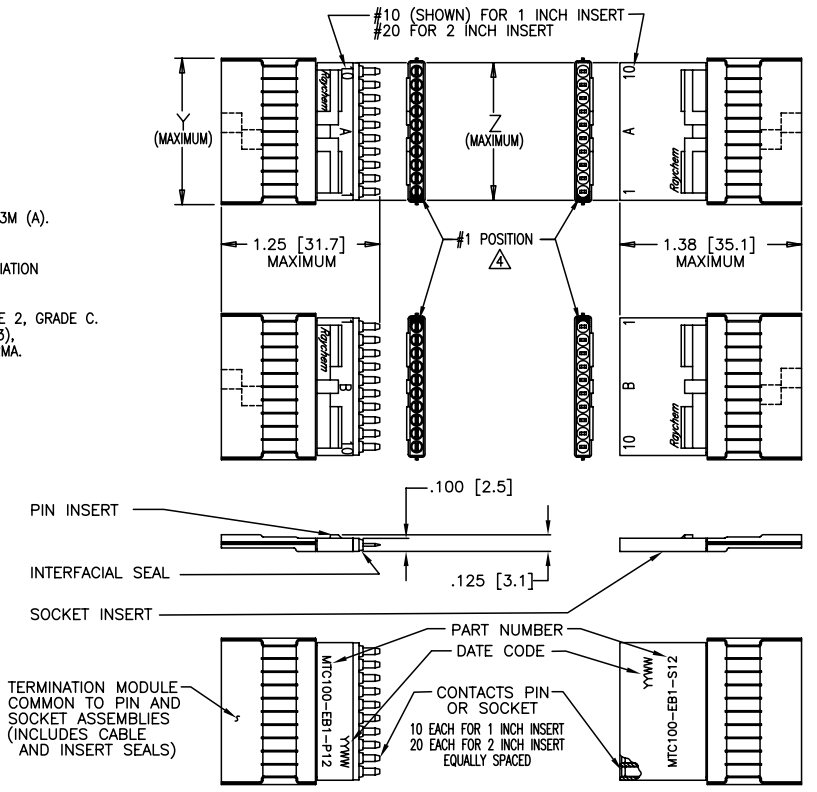
2. MATERIAL:
- A) PIN/SOCKET INSERT HIGH GRADE POLYARYLENE THERMOPLASTIC.
  - B) PIN CONTACT COPPER ALLOY PER ASTM B36, ASTM B36M
  - C) SOCKET CONTACT COPPER ALLOY PER ASTM B103, ASTM B103M (A).
  - D) CABLE AND INSERT SEAL MODIFIED THERMOPLASTIC HOT MELT SEALANT.
  - E) INTERFACIAL SEAL FLUOROSILICONE PER MIL-R-25988.
  - F) TERMINATION MODULE TRANSPARENT BLUE HEAT SHRINKABLE, RADIATION CROSS LINKED PVF<sub>2</sub>
3. FINISH:
- A) PIN/SOCKET INSERT AS MOLDED.
  - B) PIN/SOCKET CONTACT GOLD PLATE PER ASTM B488, CLASS 1, TYPE 2, GRADE C.
  - C) CONTACT TAIL SOLDER COATED PER IPC J-STD 006 (Sn63), FLUX COATED PER IPC J-STD 006, TYPE RMA.

4. NUMBER ONE POSITION IS MARKED AS SHOWN IN CONTRASTING COLOR ON INTERFACE.
5. THESE INSERTS MEET THE REQUIREMENTS OF RAYCHEM SPECIFICATION C-6111.

SIZE	WEIGHT		DIM. "Y"	DIM. "Z"	
	MAXIMUM	GRAMS			
1 INCH INSERT	PIN	.0053	2.404	1.15	1.05
	SOC.	.0060	2.722	[29.2]	[26.7]
2 INCH INSERT	PIN	.0103	4.7	2.15	2.05
	SOC.	.0119	5.398	[54.6]	[52.1]



REVISIONS			
LTR	DESCRIPTION	DATE	APPROVED
D	REVISED PER ECN T-19487	FEB-08-05	M. HIGGY
E	PER ECO-10-004620	MAR-3-2010	M. HIGGY



©2010 Tyco Electronics Corporation. All rights reserved.

CUSTOMER DRAWING

UNLESS OTHERWISE SPECIFIED DIMENSIONS ARE IN INCHES. METRIC DIMENSIONS ARE IN BRACKETS.  DECIMALS .XXX ± .005 .XX ± .001 ANGLES .X ± .5 WEIGHT: MAXIMUM SEE TABULATION	DRAWN LUTTICKEN 87SEPT15 CHECKED J.B. APPROVED J.BLAIR 87OCT02 APPROVED CAD NAME MTC100-EXX-X12 THIRD ANGLE PROJECTION		Raychem Interconnect 300 Constitution Drive Menlo Park, CA 94025 U.S.A.	
	TITLE ASSEMBLY, INSERT, FLAT CABLE TERMINATION, TEMPERATURE RATING 125 CELSIUS DEGREE MTC 100 SERIES	SIZE A CAGE CODE 06090 SCALE: NONE	DWG. NO. MTC100-EXX-X12 Dwg. No.	REV E SHEET 1 OF 1

MTC100-EXX-X12

A