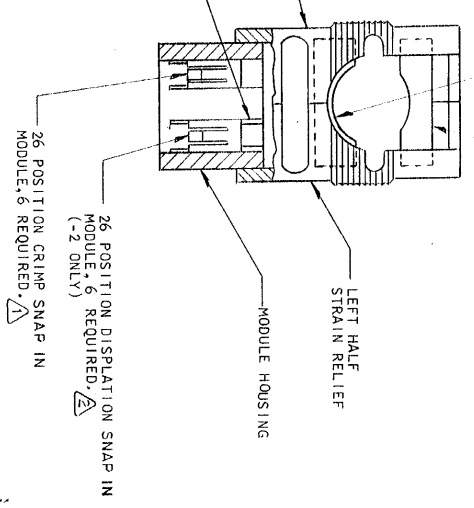
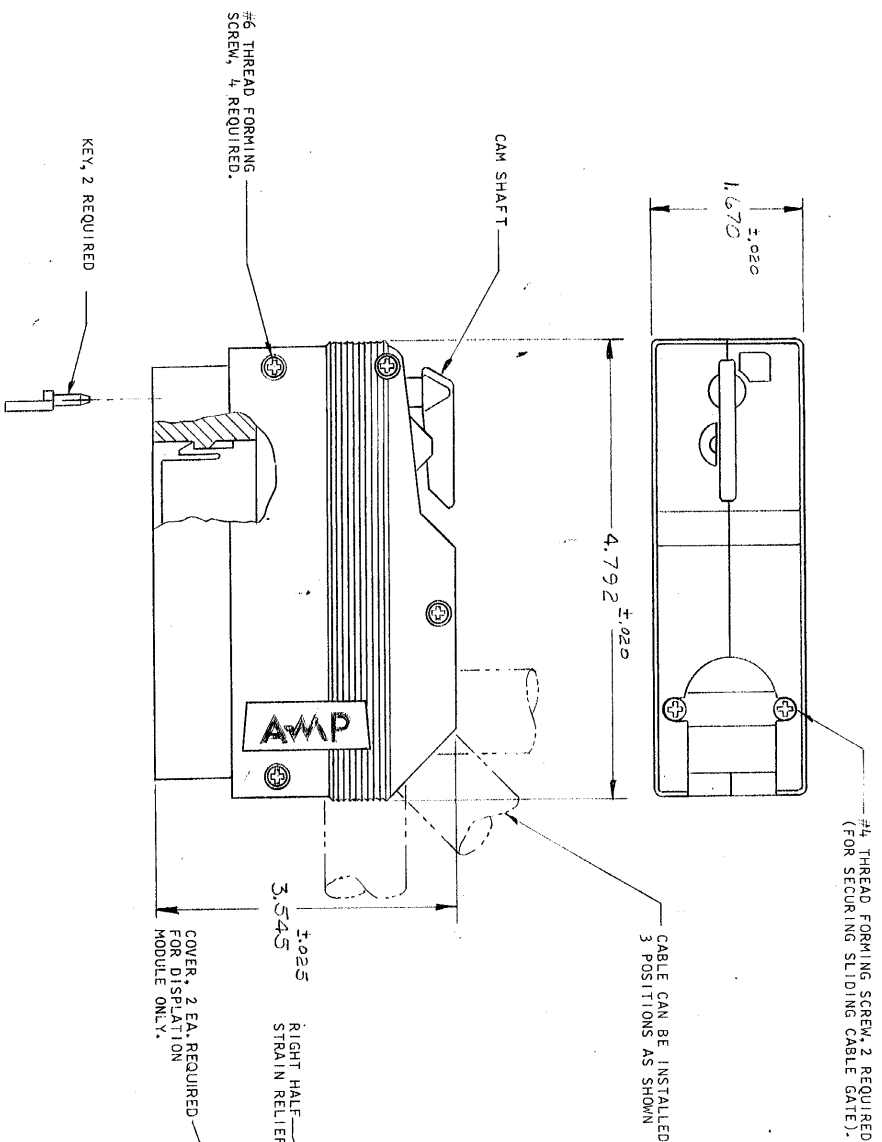


© Copyright 1975, by AMP Incorporated, Harrisburg, PA. All International Rights Reserved. AMP Incorporated is covered by U. S. Patents and/or Patents Pending. AMP and AMP Incorporated are trademarks of AMP Incorporated.

207228-1  
207228-2

1. AS SHOWN, POSITION CRIMP MODULES.
2. WITH 6-26 POSITION CRIMP MODULES.
1. SAME AS -1 EXCEPT:
2. WITH 6-26 POSITION DISPLATION MODULES.

REVISIONS		DESCRIPTION	DATE APPROVED
P	F	ZONE LTR	
✓	✓	RELEASED	4/21/75
✓	✓	ADD OVERALL DIMS	5-397 4-22-75



1. POSITION CRIMP MODULES ACCEPT "F" CRIMPED CONTACTS, (CONTACTS NOT SUPPLIED, MUST BE ORDERED SEPARATELY).
2. POSITION DISPLATION MODULES ARE SUPPLIED WITH CONTACTS.
3. MATERIAL: ALL PARTS: GLASS FILLED BLACK THERMOPLASTIC.
4. ALL ASSY SCREWS ARE STEEL, ZINC PLATED.

UNLESS OTHERWISE SPECIFIED DIMENSIONS ARE IN INCHES. TOLERANCES ON: ANGLES ±		CONTRACT NO.		PART NO.	
MATERIAL		DR		NAME	
FINISH		APPD		CABLE KIT, SIZE II, 156 POSITION, ZEP0 ENTRY CONN., SERIES "CR"	
OTHER APPD		APPROV		SIZE CODE IDENT NO/DRAWING NO	
SCALE		DATE		207228	
OTHER APPD		DATE		207228	