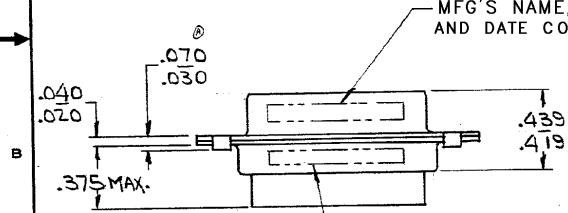
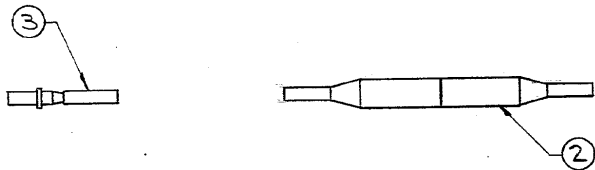
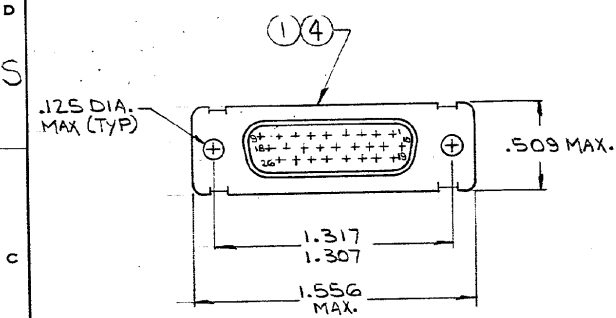


DRAWING MADE IN AMERICAN PROJECTION

REVISIONS				
ZONE	LTR	DESCRIPTION	DATE	APPROVED
F1		REVISED PER ECO-11-005030	24MAR11	HMR



MARKED ON FAR SIDE
 Ⓞ M24308/2-12F (-1, -2 & -3 ONLY)
 Ⓞ M24308/6-12F (-4, -5 & -6 ONLY)

-	-	-	-	-	MIL No.	M24308/6-12F MARKED ON PACKAGE	
-	-	-	-	-	MIL No.	M24308/2-12F MARKED ON PACKAGE	
-	-	-	-	-	MIL No.	M24308/6-18F MARKED ON PACKAGE	
-	-	-	-	-	MIL No.	M24308/2-18F MARKED ON PACKAGE	
1	1	1	-	-	C	204502-2	RECEPTACLE ASSY, SIZE 2 (BRASS SHELL) 4
2626	-	2626	-	-	B	204351-1	CONTACT, SOCKET, SIZE 220 3
-	-	-	-	-	B	91067-1	INSERTION/EXTRACTION TOOL 2
-	-	-	-	-	C	204502-1	RECEPTACLE ASSY, SIZE 2 (STEEL SHELL) 1
6	5	4	3	2	1	ENVIRONMENTAL NUMBER	NAME

204514	204514	204514	204514	204514	204514	UNLESS OTHERWISE SPECIFIED DIMENSIONS ARE IN INCHES TOLERANCES ON: DECIMALS ± # ANGLES ± #	CONTRACT NO.	DR. <i>W. H. ...</i> 11/30/70	NAME	STE TE Connectivity
085	085	085				MATERIAL	APPROVED	<i>W. H. ...</i> 12-2-70	KIT, "HDD" SERIES, RECEPTACLE, SIZE #2 (26 POS.)	REV F1
							OTHER APPD		SIZE B	CODE IDENT NO. 00779
									NUMBER 204514	SHEET 1 OF 1

△ SUPERS BY 206501-4 (26) 206071-1

CUSTOMER DRAWING

PRINT DIST. LOC DF