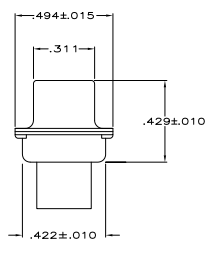
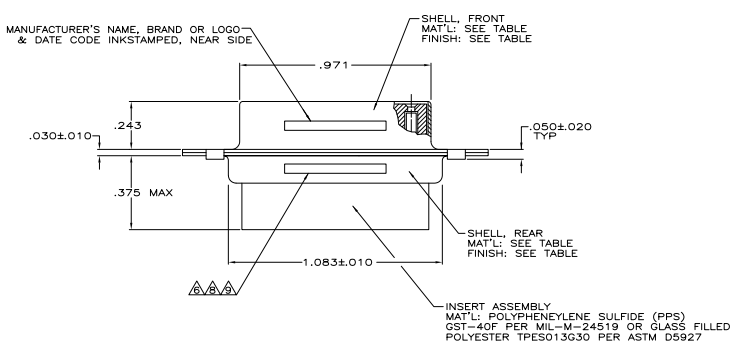


1. THIS RCPT. IS DESIGNED TO CONFORM TO THE LATEST ISSUE OF MIL-C-24308.
  2. MAX WIRE INSUL TO BE USED WITH THIS RCPT. IS #.054.
  3. METAL RETENTION CLIPS ARE INCLUDED IN INSERTS.
  4. PACKAGE STAMPED M 24308/2-287F.
  5. THIS RCPT. WILL ACCEPT SIZE 22 SOCKET CONTACT M 39029/57-354 OR ANY TYCO HD0-22 SOCKET CONTACT.
- ▲ MFG'S PART NO. STAMPED ON CONNECTOR REPRESENTS KIT NUMBER WITH CONTACTS.  
 ▲ UL/CSA DESIGNATION STAMPED ON SHELL.  
 ▲ 204514 INK STAMPED, NEAR SIDE.  
 ▲ M24308/2-12F INK STAMPED, FAR SIDE.  
 ▲ 204502-4 INK STAMPED, NEAR SIDE.  
 ▲ FINISH: BRIGHT TIN PER ASTM-B-545, .000400-.000550 THK OVER COPPER PER AMS2418, .000050 MIN THK.



▲	▲	STEEL, CLASS G	204502-4
SUPSD BY 204502-1	-	CADMIUM PER QQ-P-416	STEEL, CLASS G
SUPSD BY 206501-4	-	CADMIUM PER QQ-P-416	BRASS
▲▲▲	▲▲▲	CADMIUM PER QQ-P-416	STEEL, CLASS G
REMARKS	FINISH	SHELL MATERIAL	PART NO.

THIS DRAWING IS A CONTROLLED DOCUMENT. **THOMAS & BAKER** 01-000-01  
 25-000-01  
 25-000-01

DIMENSIONS: SEE TABLE  
 UNLESS OTHERWISE SPECIFIED:  
 DIMENSIONS ARE IN INCHES  
 DECIMALS ARE TO THREE PLACES  
 FRACTIONS ARE TO TWO PLACES  
 ANGLES ARE TO NEAREST 5 MINUTES  
 SURFACE FINISH: SEE TABLE  
 TOLERANCES: SEE TABLE  
 MATERIALS: SEE TABLE  
 FINISHES: SEE TABLE  
 CUSTOMER DRAWING: A1 00779 204502

AMPLITE RCPT. FOR SOCKET CONTACTS  
 HI-DENSITY D CONNECTOR  
 SIZE 2 (SEE POON) SERIES 90  
 SIZE: 4.1  
 SHEET: 1 OF 1  
 REV: S