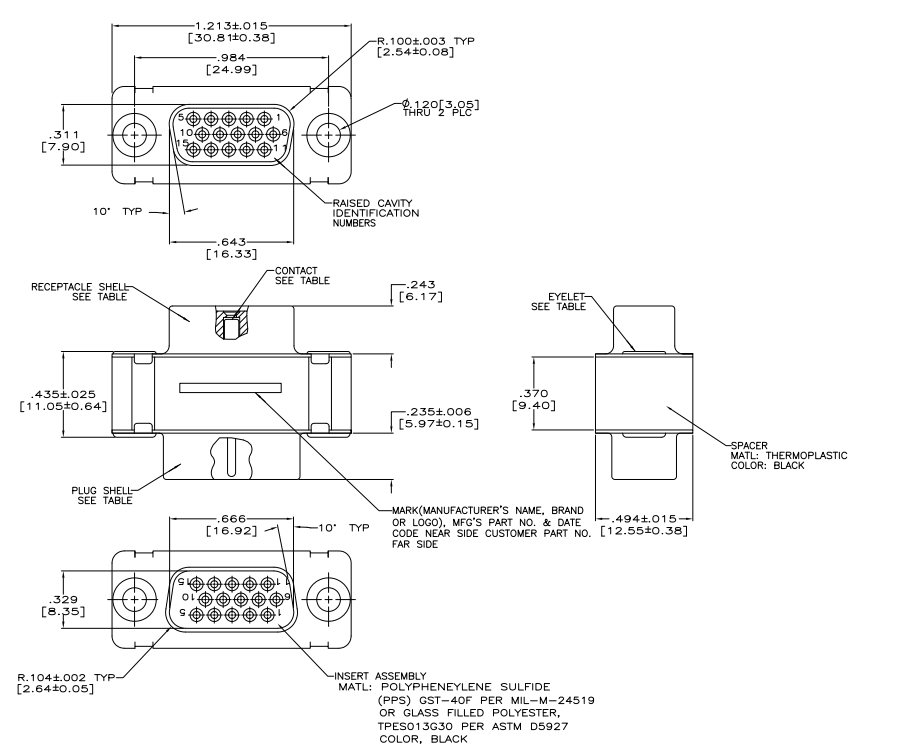
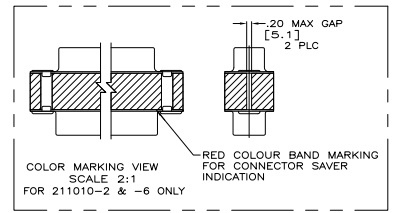


REV	DATE	DESCRIPTION	BY	CHK	APP
DF	DO				
Z		REVISED PER ECO-08-028464			



- 1 CONTACTS INCLUDED IN ASSEMBLY.
- △ MATL: STEEL, PER ASTM-A-109.
- △ FINISH: CADMIUM PER QQ-P-416.
- △ CONTACT
 BODY MATL: BERYLLIUM COPPER PER ASTM-B-197.
 BODY FINISH: PLATED GOLD, .000050 MIN THK PER MIL-G-45204 OVER NICKEL, .000050 MIN THK PER QQ-N-290.
- HOOD MATL: STAINLESS STEEL PER ASTM-A-167.
 HOOD FINISH: PASSIVATED PER ASTM-A-380
- △ FINISH: PLATED ZINC .00020 MIN THK PER ASTM-B-633.
 YELLOW CHROMATE FINISH.
- △ MATL: BRASS PER ASTM-B-36.
- △ FINISH: PLATED GOLD, .000050 MIN THK PER MIL-G-45204 OVER COPPER, .000100 MIN THK PER MIL-C-14550.
- △ CONTACT
 BODY MATL: BERYLLIUM COPPER PER ASTM-B-197.
 BODY AND HOOD FINISH: PLATED GOLD, .000050 MIN THK PER MIL-G-45204 OVER COPPER, .000100 MIN THK PER MIL-C-14550.
- HOOD MATL: BRASS PER ASTM-B-36
- △ FINISH: PLATED ZINC PER ASTM-B-633 .000200 MIN THK WITH SUPPLEMENTARY CHROMATE (Cr3+).



EYELET	SHELLS	CONTACT	CUSTOMER P/N	PART NO.
△	△	△	-	5-211010-1
△	△	△	R10002677-0106	211010-6
△	△	△	2A091-001W	211010-5
△	△	△	-	211010-4
△	△	△	(1J02-106)	211010-2
△	△	△	-	211010-1

THIS DRAWING IS A CONTROLLED DOCUMENT.

DESIGNED BY: [] CHECKED BY: []
 DRAWN BY: [] APPROVED BY: []
 DATE: []

DATE: []
 SIZE: []
 SHEET: [] OF []

CUSTOMER DRAWING: []

THIS DRAWING IS A CONTROLLED DOCUMENT. TYS ELECTRONICS CORPORATION, Harrisburg, PA 17105-3608

CONNECTOR SAVER, AMPULMITE 15 POSITION, SIZE 1, SERIES 90

DATE: [] SIZE: [] SHEET: [] OF []