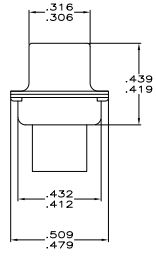
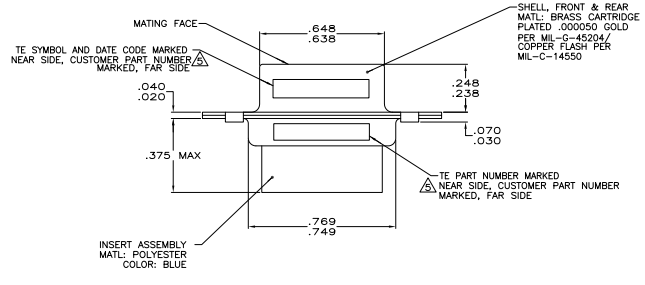
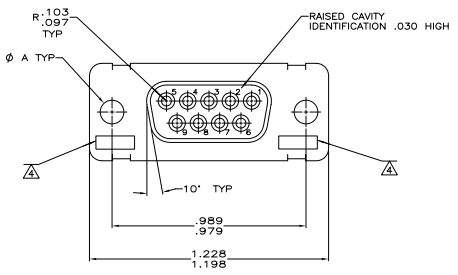


THIS DRAWING IS UNPUBLISHED  
 ALL RIGHTS RESERVED

REV	DATE	DESCRIPTION	BY	APP
1				
2				
3				
4				
5				
6				
7				
8				



- △ THIS RECEPTACLE WILL MATE WITH ANY PLUG WITH THE SAME INSERT ARRANGEMENT AS DEFINED BY MS18273-1.
- 2. MAXIMUM WIRE INSULATION USED WITH THIS RECEPTACLE IS .072 DIA MAX.
- 3. Be Cu RETENTION CLIPS ARE INCLUDED IN THIS AREA.
- △ UL/CSA DESIGNATION STAMPED IN THIS AREA.
- △ CUSTOMER PART NUMBER MAY BE SPLIT BETWEEN FRONT AND REAR SHELLS, SAME SIDE. FAR SIDE REFERS TO WIDE SIDE OF KEYSTONE, NEAR SIDE REFERS TO NARROW SIDE OF KEYSTONE.
- △ THESE CONNECTORS ARE QUALIFIED TO GODDARD SPACE FLIGHT CENTER SPECIFICATION S-311-P-4.
- 7. CUSTOMER PART NUMBER MAY BE SPLIT BETWEEN FRONT AND REAR SHELLS.
- △ RESTRICTED TO CAE ELECTRONICS ONLY.
- △ CONNECTOR SUPPLIED WITH CONTACTS, TE PART NUMBER 206793-1 (NOT INSTALLED).

SUPERSEDED BY 1996077-1				
△	.120	8333648P2	207253-8	207253-8
△	.120	570513-1	207253-7	207253-7
△	.120	LMSC 1821480-001	207253-6	207253-6
△	.120	LMSC 1821480-001	207253-5	207253-5
△	.120	311P409-1S-B-12	207253-2	207253-4
△	—	—	207253-3	207253-3
△	.120	311P409-1S-B-12	207253-2	207253-2
△	.154	311P409-1S-B-15	207253-1	207253-1

REMARKS		DIA A	INK STAMPED CUSTOMER P/N	INK STAMPED TE P/N	AMP P/N

THIS DRAWING IS A CONTROLLED DOCUMENT. DATE: 02-11-94

TE CONNECTIVITY

AMPLIMITE RECEPTACLE ASSEMBLY SERIES 109, SIZE 1

SIZE: 4.1 SHEET: 1 OF 1

DATE: 02-11-94