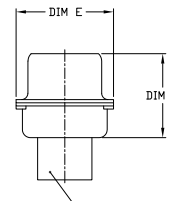
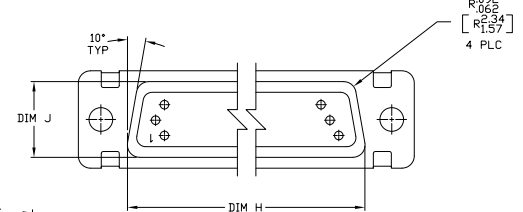


1. THE CONNECTOR DESCRIBED IN THIS DOCUMENT WILL MATE WITH ANY RECEPTACLE CONNECTOR WITH THE SAME INSERT ARRANGEMENT.
- △ MARKED WITH .047-.062 (1.19-1.57) HIGH CHARACTERS. FAR SIDE REFERS TO THE WIDE SIDE OF THE KEYSTONE. NEAR SIDE REFERS TO THE NARROW SIDE OF THE KEYSTONE. WHEN SPACE IS LIMITED MARKING CAN BE SPLIT BETWEEN FRONT AND REAR SHELL.
- △ UL/CSA DESIGNATION MARKED IN THIS AREA. (SIZE 1 THROUGH 5 ONLY)
- △ CONNECTOR ASSEMBLY WITHOUT CONTACTS, MFG'S P/N 204370-2. MUST BE ORDERED SEPARATELY.
- △ CONNECTOR ASSEMBLY SUPPLIED WITH CONTACTS, MFG'S P/N 204370-2. PACKAGED IN A SEPARATE CONTAINER. QTY = NO. OF POSN. (SEE TABLE).



SIZE 22 PIN CONTACT
 MATERIAL: COPPER ALLOY PER MIL-C-39029 & MIL-DTL-24308.
 PLATING: GOLD PER ASTM-B-488 (TYPEI) OVER NICKEL PER QQ-N-290.

INSERT ASSEMBLY
 MAT'L: POLYPHENYLENE SULFIDE (PPS)
 GSI-MP PER MIL-M-24519 OR GLASS FILLED
 PLYESTER TPES013G30 PER ASTM D3967

△ FOR SHELL SIZE 1 & 2
 AMP & DATE CODE
 MARKED ON NEAR SIDE
 FOR SHELL SIZES 3 - 6
 MILITARY PART NO.
 MARKED ON FAR SIDE

△ FOR SHELL SIZE 1 & 2
 MFG'S PART NO. (SEE TABLE)
 MARKED ON NEAR SIDE
 MILITARY PART NO. (SEE TABLE)
 MARKED ON FAR SIDE
 FOR SHELL SIZES 3 - 6
 AMP MFG'S PART NO. AND
 DATE CODE MARKED ON FAR SIDE

REMARKS	MILITARY P/N ON PACKAGE	MILITARY P/N ON CONNECTOR	MARKED △ MFG'S PART NUMBER	L	J	H	G	F	E	D	C	B	A	INSERT ARRANGEMENT	NO OF POS.	SHELL SIZE	PART NUMBER
△	M24308/4-16	M24308/4-16	1-1757823-2	.049 (1.24)	.606 (15.39)	2.312 (58.72)	2.36 (59.99)	.436 (11.07)	.683 (17.35)	.508 (12.90)	2.505 (63.63)	2.217 (56.31)	2.744 (69.70)	MS14004-1	104	6	1-1757823-2
△	M24308/4-15	M24308/4-15	1-1757823-1	.049 (1.24)	.586 (14.88)	2.292 (58.22)	2.24 (56.93)	.416 (10.57)	.653 (16.59)	.448 (11.39)	2.495 (63.37)	2.207 (56.01)	2.714 (68.94)	MS18277-2	78	5	1-1757823-1
△	M24308/4-14	M24308/4-14	1-1757823-0	.049 (1.24)	.544 (13.82)	2.198 (55.89)	2.26 (57.99)	.436 (11.07)	.620 (15.75)	.448 (11.39)	2.411 (61.24)	2.187 (55.50)	2.650 (66.91)	MS18276-2	62	4	1-1757823-0
△	M24308/4-13	M24308/4-13	1757823-9	.049 (1.24)	.432 (10.97)	2.282 (57.96)	2.26 (57.99)	.436 (11.07)	.509 (12.93)	.334 (8.48)	2.205 (56.03)	2.197 (55.50)	2.744 (69.70)	MS18275-2	44	3	1757823-9
△	M24308/4-12	M24308/4-12	1757823-8	.049 (1.24)	.412 (10.46)	1.815 (45.82)	2.24 (56.93)	.416 (10.57)	.479 (12.17)	.324 (8.23)	1.847 (46.91)	1.959 (49.84)	2.723 (69.65)	MS18274-2	26	2	1757823-8
△	M24308/4-11	M24308/4-11	1757823-7	.040 (1.02)	.432 (10.97)	1.093 (27.76)	2.26 (57.99)	.436 (11.07)	.509 (12.93)	.334 (8.48)	1.827 (47.17)	1.939 (49.09)	2.103 (53.42)	MS18273-2	15	1	1757823-7
△	M24308/4-269	M24308/4-16	1-1757823-2	.049 (1.24)	.606 (15.39)	2.312 (58.72)	2.36 (59.99)	.436 (11.07)	.683 (17.35)	.508 (12.90)	2.505 (63.63)	2.217 (56.31)	2.744 (69.70)	MS14004-1	104	6	1757823-6
△	M24308/4-268	M24308/4-15	1-1757823-1	.049 (1.24)	.586 (14.88)	2.292 (58.22)	2.24 (56.93)	.416 (10.57)	.653 (16.59)	.448 (11.39)	2.495 (63.37)	2.207 (56.01)	2.714 (68.94)	MS18277-2	78	5	1757823-5
△	M24308/4-267	M24308/4-14	1-1757823-0	.049 (1.24)	.544 (13.82)	2.198 (55.89)	2.26 (57.99)	.436 (11.07)	.620 (15.75)	.448 (11.39)	2.411 (61.24)	2.187 (55.50)	2.650 (66.91)	MS18276-2	62	4	1757823-4
△	M24308/4-266	M24308/4-13	1757823-9	.049 (1.24)	.432 (10.97)	2.282 (57.96)	2.26 (57.99)	.436 (11.07)	.509 (12.93)	.334 (8.48)	2.205 (56.03)	2.197 (55.50)	2.744 (69.70)	MS18275-2	44	3	1757823-3
△	M24308/4-265	M24308/4-12	1757823-8	.040 (1.02)	.412 (10.46)	1.815 (45.82)	2.24 (56.93)	.416 (10.57)	.479 (12.17)	.324 (8.23)	1.847 (46.91)	1.959 (49.84)	2.723 (69.65)	MS18274-2	26	2	1757823-2
△	M24308/4-264	M24308/4-11	1757823-7	.040 (1.02)	.432 (10.97)	1.093 (27.76)	2.26 (57.99)	.436 (11.07)	.509 (12.93)	.334 (8.48)	1.827 (47.17)	1.939 (49.09)	2.103 (53.42)	MS18273-2	15	1	1757823-1

THIS DRAWING IS A CONTROLLED DOCUMENT. IT IS THE PROPERTY OF TE CONNECTIVITY. IT IS TO BE KEPT IN CONFIDENCE AND NOT TO BE REPRODUCED OR TRANSMITTED IN ANY FORM OR BY ANY MEANS, ELECTRONIC OR MECHANICAL, INCLUDING PHOTOCOPYING, RECORDING, OR BY ANY INFORMATION STORAGE AND RETRIEVAL SYSTEM.

TE Connectivity
 AMPLETYPE PLUG ASSY, SIZE 1 THRU 6
 SERIES 90 WITH ZINC PLATED SHELLS

DATE: 00779 ©=1757823
 SIZE: 4:1
 REV: 1