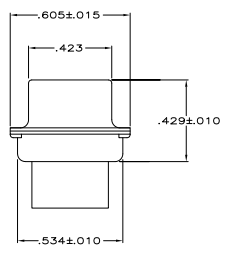
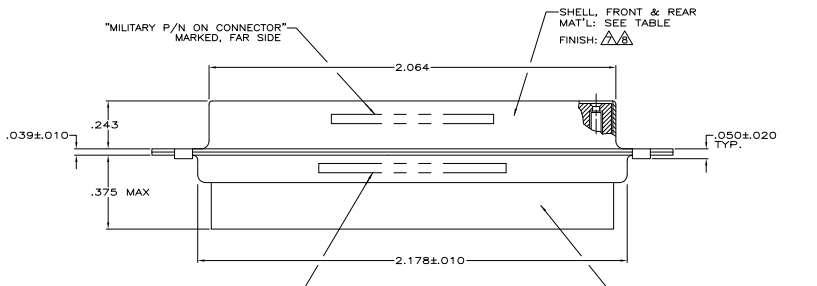
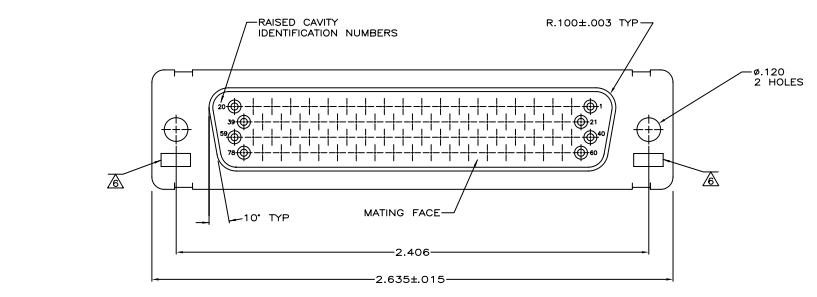


- THIS RCPT. IS DESIGNED TO CONFORM TO THE LATEST ISSUE OF MIL-C-24308.
  - MAX WIRE INSUL. TO BE USED WITH THIS RCPT IS .054 DIA.
  - METAL RETENTION CLIPS ARE INCLUDED IN INSERTS.
  - THIS RCPT. WILL ACCEPT SIZE 22 SOCKET CONTACT M39029/57-354 OR ANY TYCO HDD-22 SOCKET CONTACT. CONTACTS ORDERED SEPARATELY.
- ▲ MFG'S PART NO. MARKED ON CONNECTOR REPRESENTS KIT NUMBER WITH CONTACTS.
  - ▲ UL/CSA DESIGNATION STAMPED IN THIS AREA, OPTIONAL.
  - ▲ FINISH: CADMIUM PER QQ-P-416.
  - ▲ FINISH: BRIGHT TIN PER ASTM-B-545 .000400-.000550 THK OVER COPPER PER AMS2418 .000050 MIN THK.



MANUFACTURER'S NAME, BRAND OR LOGO, "MARKED TO CONNECTIVITY P/N", & DATE CODE MARKED, FAR SIDE

MILITARY P/N ON PACKAGE	MILITARY P/N ON CONNECTOR	MFG'S P/N ON CONNECTOR	REMARKS	SHELL FINISH	SHELL MAT'L	INSERT MAT'L	PART NO.
-	-	204508-5	-	▲	STEEL, CLASS G	POLYPHENYLENE SULFIDE(PPS) PER MIL-M-24519, TYPE GST-40F COLOR: BLACK	204508-5
SUPSD BY 204508-1	-	-	-	-	STEEL, CLASS G	PHENOLIC COLOR: BLACK	204508-3
SUPSD BY 206505-4	-	-	-	-	BRASS	DIALYL PHTHALATE COLOR: BLUE	204508-2
M24308/2-290F	M24308/2-15F	204520-2	▲	▲	STEEL, CLASS G	POLYPHENYLENE SULFIDE(PPS) PER MIL-M-24519, TYPE GST-40F COLOR: BLACK	204508-1

THIS DRAWING IS A CONTROLLED DOCUMENT. DATE: 01-06-07

DESIGNED BY: J. THOMAS (J. THOMAS) 01-06-07  
 DRAWN BY: J. BALEW (J. BALEW) 01-06-07  
 CHECKED BY: J. BALEW (J. BALEW) 01-06-07  
 APPROVED BY: J. BALEW (J. BALEW) 01-06-07

AMPLITE RCPT FOR SOCKET CONTACTS HI-DENSITY D CONNECTOR SIZE 5 (75 POIN) SERIES 90

SEE: DATE SIZE DRAWING NO: A1 00779 (C)=204508

CUSTOMER DRAWING