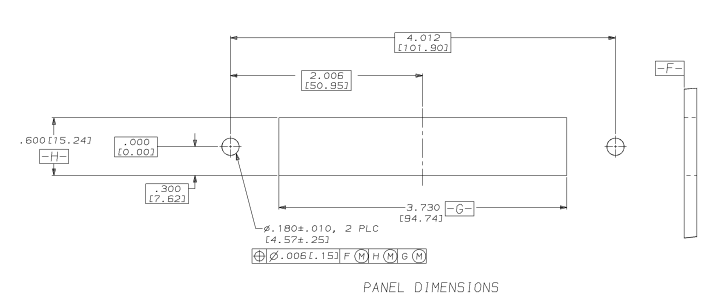
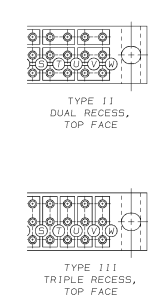
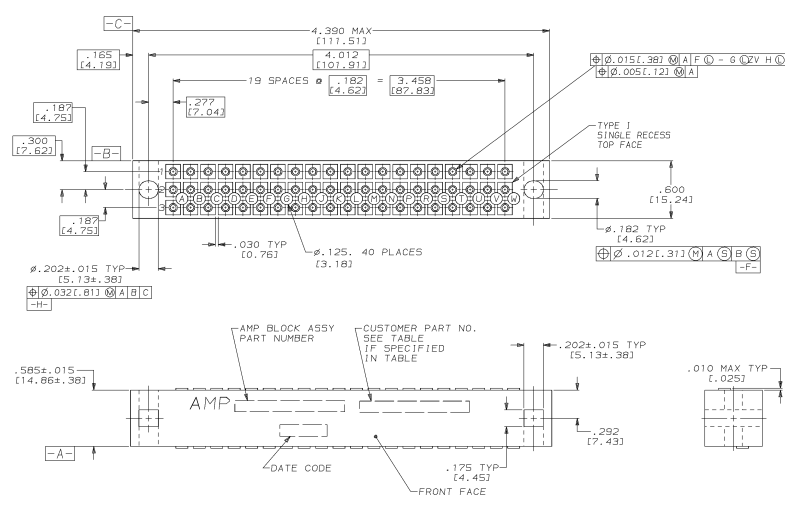


REV	DATE	BY	CHK	APPD	DESCRIPTION
DL	05-94	TT			REV PER 0600-1538-93 TT
DM	11-94	TT			REV PER 0600-3232-94 TT

- AMP BLOCK ASSEMBLY PART NUMBER, "AMP" & DATE CODE STAMPED ON FRONT FACE UNLESS OTHERWISE SPECIFIED IN TABLE.
 - IF STAMPING OF A CUSTOMER PART NUMBER IS SPECIFIED IN TABLE AMP BLOCK ASSEMBLY PART NUMBER IS OMITTED.
 - ALL CHARACTERS ON FRONT OR REAR FACE ARE .13 HIGH.
 - CHARACTERS 1, 2, 3 & A THRU W ARE STAMPED .06 HIGH ON BOTH TOP AND BOTTOM FACE OF BLOCK UNLESS OTHERWISE SPECIFIED IN TABLE.
 - COLOR OF ALL CHARACTERS IS BLACK ON NATURAL & YELLOW COLORED BLOCKS AND WHITE ON ALL OTHER COLORED BLOCKS.
 - MAXIMUM TOTAL BOW PERMISSIBLE = .025 INCH.
- 2-581342-1 STAMPED AS SHOWN:
-
- 593799-1 STAMPED AND RECESS ARRANGMENT AS SHOWN:
-
- NOTES 1 THRU 5 EXCEPT OMIT 1, 2, & 3 AND A THRU W TO BE 1, 3, 5, 7, 8 THRU 31 (FIRST POSN AND LAST THREE POSN'S BLANK).



DO NOT SCALE PRINT. UNLESS SPECIFIED DIMENSIONS IN INCHES (mm) TOLERANCES ON: 2 PLE DEC # .010(0.25) 3 PLE DEC # .005(0.127) ANGLES #	DR 03-28-94 T. THOMPSON CHK 05-23-94 A. SHARPE APPD 05-23-94 A. SHARPE PRODUCT SPEC 108-7053 108-7054	AMP Incorporated Harrisburg, PA 17105-3608
MATERIAL: BLOCK, SEE TABLE INSERT, BRASS	APPLICATION SPEC -	NAME CONNECTOR BLOCK ASSEMBLY, TAPER 53 SERIES, 60 POSITION
FINISH SEE TABLE	SIZE D	DRAWING NO. 00773
	WEIGHT APPROX. 45.4 GRAMS	CAGE CODE C=581173
		SCALE 2:1
		SHEET 1 OF 2

THIS DRAWING IS A CONTROLLED DOCUMENT FOR AMP INCORPORATED. IT IS SUBJECT TO OWNERSHIP AND THE CONTROLLING ORGANIZATION SHOULD BE CONTACTED FOR THE LATEST REVISION.

REV. NO.	DATE	DESCRIPTION	APP'D.
1		SEE SHEET 1	

NOTE	THRU	TYPE	FUNCTION	PLATING	MATERIAL	COLOR	PART NO.
NOTE 1 EXCEPT	11	20 SINGLE ROW 182, 20 COMMON ROW 3			GOLD	NYLON	NATURAL 583799-1
NOTES 1 THRU 5 & CUST NO 1942441-21	I	4 COMMON 5 SETS 3 ROWS			GOLD	NYLON	NATURAL 4-583564-1
NOTES 1 THRU 5	I	4 COMMON 5 SETS 3 ROWS			GOLD	NYLON	NATURAL 583564-1
NOTES 1 THRU 5	III	ALL TRIPLE			GOLD	NYLON	NATURAL 3-583158-9
NOTES 1 THRU 5	I	20 COMMON 3 ROWS			GOLD	NYLON	NATURAL 3-583154-9
NOTES 1 THRU 5	III	6 COMMON ROW ABS, CSD, ETC.			GOLD	NYLON	BLACK 3-582753-0
NOTES 1 THRU 5 EXCEPT OMIT 1, 2, 3 & A THRU W TO BE 1 THRU 20 .04 HIGH	I	20 COMMON 3 ROWS			GOLD	NYLON	GRAY 3-582656-8
NOTES 1 THRU 5	I	20 COMMON 3 ROWS			GOLD	NYLON	RED 3-582656-2
NOTES 1 THRU 5	I	20 COMMON 3 ROWS			GOLD	NYLON	BLUE 3-582640-6
NOTES 1 THRU 5	I	20 COMMON 3 ROWS			GOLD	NYLON	ORANGE 3-582640-3
NOTES 1 THRU 5	I	20 COMMON 3 ROWS			GOLD	NYLON	BLACK 3-582640-0
NOTES 1 THRU 5 EXCEPT	III	ALL TRIPLE			GOLD	NYLON	NATURAL 3-582521-9
NOTES 1 THRU 5 EXCEPT	III	ALL TRIPLE			GOLD	NYLON	BLUE 3-582521-6
NOTES 1 THRU 5 EXCEPT	III	ALL TRIPLE			GOLD	NYLON	GREEN 3-582521-5
NOTES 1 THRU 5 EXCEPT	III	ALL TRIPLE			GOLD	NYLON	ORANGE 3-582521-3
NOTES 1 THRU 5 EXCEPT	III	ALL TRIPLE			GOLD	NYLON	RED 3-582521-2
NOTES 1 THRU 5	I	ALL SINGLE			GOLD	NYLON	BLACK 3-582521-0
NOTES 1 THRU 5	I	ALL SINGLE ROW 1 & 3			GOLD	NYLON	NATURAL 3-582411-9
NOTES 1 THRU 5	II	ALL COMMON ROW 2			GOLD	NYLON	BLACK 3-582411-0
NOTES 1 THRU 5	II	ALL DUAL			GOLD	NYLON	ORANGE 3-582401-3
NOTES 1 THRU 5	II	ALL DUAL			TIN	NYLON	BLACK 1-582401-0
NOTES 1 THRU 5 & CUST NO 1942441-22	I	10 COMMON 6 SETS			GOLD	NYLON	NATURAL 4-582363-1
NOTES 1 THRU 5	I	10 COMMON 6 SETS			GOLD	NYLON	NATURAL 3-582363-9
NOTES 1 THRU 5 & CUST NO 1942441-16	I	5 COMMON 4 SETS PER ROW			GOLD	NYLON	NATURAL 4-582362-1
NOTES 1 THRU 5 EXCEPT OMIT 1, 2, 3 & A THRU W	I	4 COMMON, 5 SETS, 3 ROWS			GOLD	NYLON	NATURAL 4-582362-0
NOTES 1 THRU 5	I	5 COMMON 4 SETS PER ROW			GOLD	NYLON	NATURAL 2-582362-9
NOTES 1 THRU 5	III	ALL TRIPLE			GOLD	NYLON	BLUE 3-582349-6
NOTES 1 THRU 5	III	ALL TRIPLE			GOLD	NYLON	BLACK 3-582349-0
NOTES 1 THRU 5 EXCEPT	I	ALL SINGLE			GOLD	NYLON	NATURAL 3-582219-9
NOTES 1 THRU 5 EXCEPT	I	ALL SINGLE			GOLD	NYLON	BLUE 3-582219-6
NOTES 1 THRU 5 EXCEPT	I	ALL SINGLE			GOLD	NYLON	YELLOW 3-582219-4
NOTES 1 THRU 5 EXCEPT	I	ALL SINGLE			GOLD	NYLON	RED 3-582219-2
NOTES 1 THRU 5 EXCEPT	I	ALL SINGLE			GOLD	NYLON	BROWN 3-582219-1
NOTES 1 THRU 5 & CUST NO 1942441-14	I	ALL SINGLE			TIN	NYLON	RED 1-582219-2
NOTES 1 THRU 5	I	ALL COMMON			GOLD	NYLON	NATURAL 4-582217-1
NOTES 1 THRU 5	I	ALL COMMON			GOLD	NYLON	NATURAL 3-582217-9
NOTES 1 THRU 5	I	ALL COMMON			GOLD	NYLON	RED 3-582217-2
NOTES 1 THRU 5	I	ALL COMMON			GOLD	NYLON	BLACK 3-582217-0
NOTES 1 THRU 5 EXCEPT OMIT	III	ALL TRIPLE			GOLD	NYLON	NATURAL 3-582182-9
NOTES 1 THRU 5 EXCEPT OMIT	I	ALL SINGLE			GOLD	NYLON	NATURAL 3-582181-9
NOTES 1 THRU 5 & CUST NO 1942441-19	I	20 COMMON 3 ROWS			GOLD	NYLON	NATURAL 4-582150-1
NOTES 1 THRU 5	I	20 COMMON 3 ROWS			GOLD	NYLON	NATURAL 3-582150-9
NOTES 1 THRU 5	I	20 COMMON 3 ROWS			TIN	NYLON	NATURAL 1-582150-9
NOTES 1 THRU 5 & CUST NO 1942441-5	III	ALL TRIPLE			GOLD	NYLON	NATURAL 4-581342-1
NOTES 1 THRU 5	III	ALL TRIPLE			TIN	NYLON	NATURAL 2-581342-1
NOTES 1 THRU 5	III	ALL TRIPLE			GOLD	NYLON	NATURAL 581342-3
NOTES 1 THRU 5	III	ALL TRIPLE			SILVER	NYLON	NATURAL 581342-2
NOTES 1 THRU 5	III	ALL TRIPLE			TIN	NYLON	NATURAL 581342-1
NOTES 1 THRU 5	II	ALL DUAL			GOLD	POLYETHYLENE	NATURAL 581178-3
NOTES 1 THRU 4 & CUST NO 1942441-18	II	ALL DUAL			GOLD	NYLON	NATURAL 4-581177-1
NOTES 1 THRU 5	II	ALL DUAL			GOLD	NYLON	NATURAL 581177-3
NOTES 1 THRU 5	II	ALL DUAL			TIN	NYLON	NATURAL 581177-1
NOTES 1 THRU 5	I	ALL SINGLE			GOLD	POLYETHYLENE	NATURAL 581174-3
NOTES 1 THRU 5 & CUST NO 1942441-15	I	ALL SINGLE			GOLD	NYLON	NATURAL 4-581173-1
NOTES 1 THRU 5	I	ALL SINGLE			GOLD	NYLON	NATURAL 581173-3

DO NOT SCALE PRINT. UNLESS SPECIFIED, DIMENSIONS IN INCHES (mm) TOLERANCES ON 3 PLE DEC # .010 ANGLES

DR 03-28-94
 T. THOMPSON
 CKR 05-23-94
 A. SHARPE
 APPD 05-23-94
 A. SHARPE
 APPD 05-23-94
 A. SHARPE
 PRODUCT SPEC 108-7053
 108-7054

AMP AMP Incorporated
 Harrisburg, PA 17105-3608

NAME
**CONNECTOR BLOCK ASSEMBLY,
 TAPER, 53 SERIES, 60 POSITION**

FINISH
 BLOCK: SEE TABLE
 INSERT: BRASS

APPLICATION SPEC
 SIZE
 CASE CODE
 DRAWING NO
 WGT/PC APPROX. 45.4 GRAMS
 SCALE 2:1

00773
 581173

00773
 581173

SHEET 2 OF 2
 CUSTOMER DRAWING