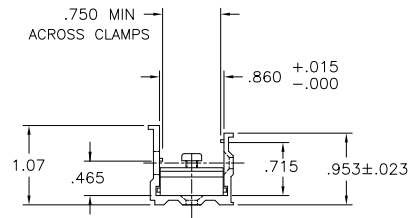
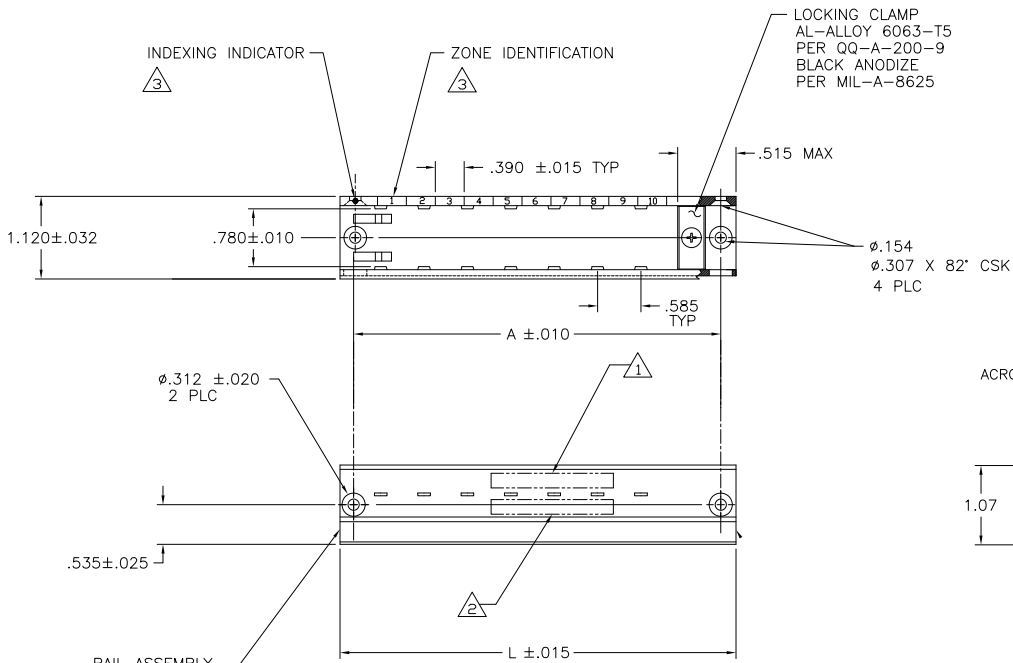


DRAWING MADE IN THIRD ANGLE PROJECTION
 THIS DRAWING IS UNPUBLISHED. RELEASED FOR PUBLICATION, 19

P	F	ZONE	LTR	DESCRIPTION	DATE	APPROVED
		A1	REVISED PER	ECO-11-005030	21MAR11	HMR



RAIL ASSEMBLY
 AL-ALLOY 6063-T5
 PER QQ-A-200-9
 BLACK ANODIZE
 PER MIL-A-8625

LOCKING CLAMP
 AL-ALLOY 6063-T5
 PER QQ-A-200-9
 BLACK ANODIZE
 PER MIL-A-8625

4. PART NO.'S 591613-1 THRU 2-591613-0 WERE FORMERLY MATRIX SCIENCE PART NO.'S MRTB-1 THRU MRTB-20.

- 3 MARK RAIL ASSEMBLY WITH INDEXING INDICATOR AND ZONE IDENTIFICATION AT APPROXIMATE AREA SHOWN.
- 2 MARK RAIL ASSEMBLY WITH CUSTOMER PART NO. .060 MINIMUM HIGH CHARACTERS AT APPROXIMATE AREA SHOWN.
- 1 MARK RAIL ASSEMBLY WITH "AMP", PART NO. AND DATE CODE .060 MINIMUM HIGH CHARACTERS AT APPROXIMATE AREA SHOWN.

MRTB-2	1.671	2.171	2-591613-1
-----	8.691	9.191	2-591613-0
-----	8.301	8.801	1-591613-9
-----	7.911	8.411	1-591613-8
-----	7.521	8.021	1-591613-7
-----	7.131	7.631	1-591613-6
M81714/5-13	6.741	7.241	1-591613-5
M81714/5-12	6.351	6.815	1-591613-4
M81714/5-11	5.961	6.461	1-591613-3
M81714/5-10	5.571	6.071	1-591613-2
M81714/5-9	5.181	5.681	1-591613-1
CUSTOMER PART NO. 2	DIM. A	DIM. L	PART NO

M81714/5-1	4.791	5.291	1-591613-0
M81714/5-8	4.401	4.901	591613-9
M81714/5-7	4.011	4.511	591613-8
M81714/5-6	3.621	4.121	591613-7
M81714/5-5	3.231	3.731	591613-6
M81714/5-4	2.841	3.341	591613-5
M81714/5-3	2.451	2.951	591613-4
M81714/5-2	2.061	2.561	591613-3
-----	1.671	2.171	591613-2
-----	1.281	1.781	591613-1
CUSTOMER PART NO. 2	DIM. A	DIM. L	PART NO

UNLESS OTHERWISE SPECIFIED DIMENSIONS ARE IN INCHES. TOLERANCES UNLESS OTHERWISE SPECIFIED ARE: 2 PLC DEC ± .01 3 PLC DEC ± .005 ANGLES ± ---

MATERIAL _____
 FINISH _____

CONTRACT NO
 DR N. FRITZ 04-26-93
 CHK R. RYAN 03-31-93
 APPD R. RYAN 03-31-93
 APPD D. ENGLER 03-31-93
 DSGN APPD
 OTHER APPD

STE TE Connectivity
 NAME
RAIL, FEED-BACK ASSEMBLY TJ
 SIZE C FSC# 00779 DRAWING NO 591613
 SCALE 4 : 1 SHEET 1 OF 1

591613

A