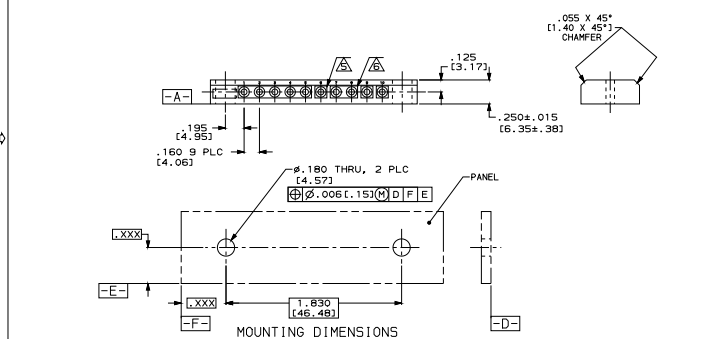
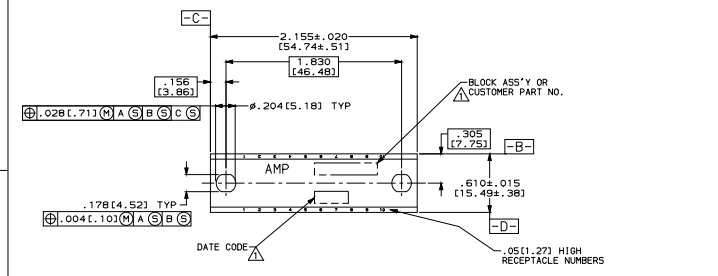
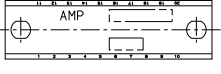


MAKING MADE IN THIS AREA PROTECTION
THIS DRAWING IS UNPUBLISHED.
© COPYRIGHT 19 BY AMP INCORPORATED. ALL INTERNATIONAL RIGHTS RESERVED.

REV	DF	NO	DATE	DESCRIPTION	BY	APP



- AMP BLOCK ASSEMBLY PART NUMBER, "AMP", & DATE CODE ARE STAMPED ON FRONT FACE UNLESS OTHERWISE SPECIFIED IN TABLE.
- IF STAMPING OF A CUSTOMER PART NUMBER IS SPECIFIED IN TABLE AMP BLOCK ASSEMBLY PART NUMBER IS OMITTED.
- ALL CHARACTERS ARE 13±.02 [3.30±.51] HIGH UNLESS OTHERWISE SPECIFIED.
- COLOR OF ALL STAMPED CHARACTERS TO BE BLACK ON NATURAL & YELLOW COLORED BLOCKS, WHITE ON ALL OTHER COLORED BLOCKS.
- RECESSES TO BE .12±.02 [3.04±.51] ROUND OR SQUARE AROUND SINGLE INSERTS.
- RECESSES TO BE .12±.02 [3.04±.51] WIDE AND ELONGATED FOR GROUPS OF COMMON INSERTS.
- NUMBERS 1 THRU 10 ON Ø OF RECEPTACLES TO BE 16 THRU 20 ON Ø OF EACH PAIR OF RECEPTACLES.
- RECEPTACLE NUMBERS 1 THRU 10 TO BE 1 THRU 20 AS SHOWN.
- NUMBERS 1 THRU 10 ON Ø OF RECEPTACLES TO BE 1 THRU 5 ON Ø OF EACH PAIR OF RECEPTACLES.
- NUMBERS 1 THRU 10 ON Ø OF RECEPTACLES TO BE 6 THRU 10 ON Ø OF EACH PAIR OF RECEPTACLES.
- NUMBERS 1 THRU 10 ON Ø OF RECEPTACLES TO BE 11 THRU 15 ON Ø OF EACH PAIR OF RECEPTACLES.



STAMPING	ARRANGEMENT	INSERTS	PLATING	COLOR	PART NO	
△	△	ALL COMMON		GOLD	NATURAL	583571-2
△	△	3 COMMON 1-3,4-6, 2 COMMON 7-8,9-10		GOLD	NATURAL	3-582408-9
△	△	3 COMMON 1-3,4-6,2 COMMON 7-8,9-10		GOLD	RED	3-582408-2
△	△	2 COMMON 1-2,3-4, SINGLE 5,6,7,8,9,10		TIN	NATURAL	1-582305-9
△	△	3 COMMON 1-2, 3-4, 5-6, 4 COMMON 7-10		GOLD	NATURAL	3-582138-9
△	△	5 COMMON 1-5,6-10		TIN	NATURAL	581952-9
△	△	5 COMMON 1-5,6-10		GOLD	NATURAL	581950-9
△	△	5 COMMON 1-5,6-10		GOLD	GRAY	581950-8
△	△	5 COMMON 1-5,6-10		GOLD	VIOLET	581950-7
△	△	5 COMMON 1-5,6-10		GOLD	BLUE	581950-6
△	△	5 COMMON 1-5,6-10		GOLD	ORANGE	581950-3
△	△	5 COMMON 1-5,6-10		GOLD	RED	581950-2
△	△	ALL COMMON 1-10		TIN	NATURAL	581948-9
△	△	ALL SINGLE		GOLD	BLACK	581424-8
△	△	ALL SINGLE		GOLD	GREEN	581424-5
△	△	ALL SINGLE		GOLD	YELLOW	581424-4
△	△	ALL SINGLE		GOLD	RED	581424-2
△	△	ALL SINGLE		GOLD	NATURAL	581424-0
△	△	2 COMMON 1-2,3-4,5-6,7-8,9-10		GOLD	BLACK	581358-9
△	△	ALL COMMON 1-10		GOLD	GRAY	4-480112-1
△	△	ALL COMMON 1-10		GOLD	NATURAL	480112-9
△	△	ALL COMMON 1-10		GOLD	GRAY	480112-8
△	△	ALL COMMON 1-10		GOLD	GREEN	480112-5
△	△	ALL COMMON 1-10		GOLD	RED	480112-2
△	△	ALL COMMON 1-10		GOLD	BLACK	480112-0
△	△	2 COMMON 1-2,3-4,5-6,7-8,9-10		TIN	NATURAL	1-480064-0
△	△	2 COMMON 1-2,3-4,5-6,7-8,9-10		TIN	NATURAL	480064-9
△	△	2 COMMON 1-2,3-4,5-6,7-8,9-10		TIN	NATURAL	480064-8
△	△	2 COMMON 1-2,3-4,5-6,7-8,9-10		TIN	NATURAL	480064-7
△	△	2 COMMON 1-2,3-4,5-6,7-8,9-10		GOLD	NATURAL	480064-6
△	△	2 COMMON 1-2,3-4,5-6,7-8,9-10		TIN	NATURAL	480064-4
△	△	ALL SINGLE		GOLD	NATURAL	480064-3
△	△	ALL SINGLE		TIN	NATURAL	480064-1

DO NOT SCALE PRINT. UNLESS SPECIFIED.	DR T. THOMPSON 4-29-94	AMP Incorporated Harrisburg, PA 17105-3608
DIMENSIONS IN INCHES (mm)	CHK 04-26-94 A. SHARPE	
TOLERANCES: DIM 1/16	APPD 04-26-94 A. SHARPE	NAME CONNECTOR BLOCK ASSEMBLY, TAPER, 53 SERIES, 10 CAVITY
2 PLC DEC ± .016(.25)	APPD 04-26-94 A. SHARPE	
3 PLC DEC ± .016(.25)	PRODUCT SPEC 108-7053 108-7054	SIZE CAGE CODE DRAWING NO. 00779 480064
ANGLES ±	FINISH	
SEE TABLE	APPLICATION SPEC	SCALE 2:1
WEIGHT APPROX. 8 GRAMS	WEIGHT	

THIS DRAWING IS A CONTROLLED DOCUMENT FOR AMP INCORPORATED. IT IS SUBJECT TO CHANGE AND THE CONTROLLING AND REVISION INFORMATION SHOULD BE CONTACTED FOR THE LATEST REVISION.