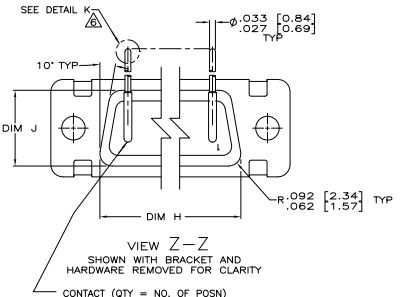
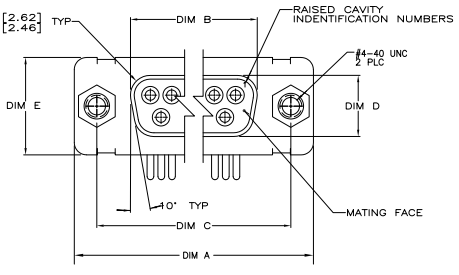


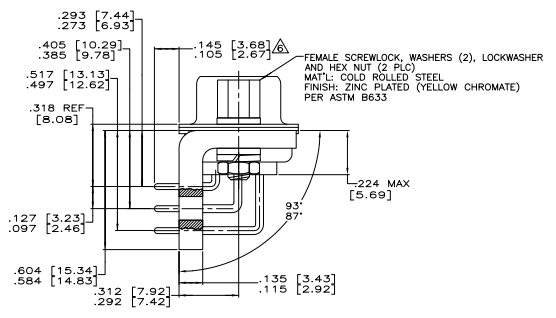
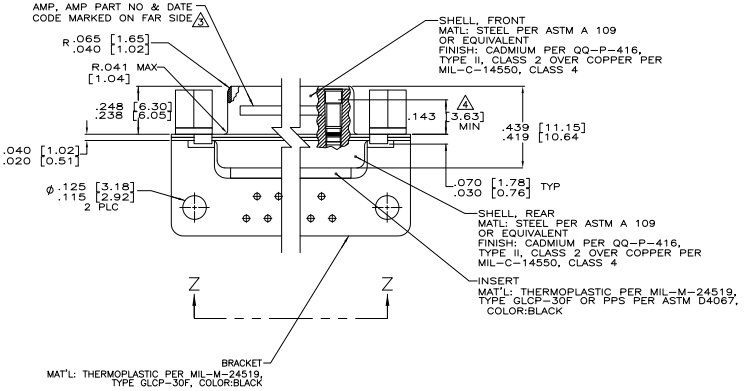
THIS DRAWING IS UNCLASSIFIED
 UNLESS INDICATED OTHERWISE
 © 2008 BY Tyco Electronics Corporation. ALL RIGHTS RESERVED.

REV	DATE	DESCRIPTION	BY	CHK	APP
1					
2					
3					
4					
5					
6					
7					
8					

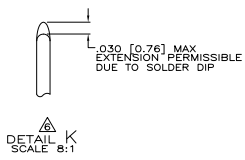


CONTACT (QTY = NO. OF POSN)
 MATL: BRASS PER ASTM-B-16, OR BERYLLIUM
 COPPER PER ASTM-B-194
 FINISH: GOLD PER MIL-G-45204, TYPE II,
 GRADE C, CLASS 1 IN CONTACT MATING AREA,
 .000010 [0.0003] MIN THK GOLD PER MIL-G-45204
 OVER .000050 [0.0013] MIN THK NICKEL
 PER QQ-N-290 ON CONTACT BODY

- 1. TRUE POSITION TOLERANCE FOR P.C. BOARD LAYOUT IS .010 [0.25] AT MAX MATERIAL CONDITION. SUGGESTED BOARD THICKNESS IS .125 [3.18]
- 2. THE CONNECTORS DESCRIBED IN THIS DOCUMENT MEET THE REQUIREMENTS OF MIL-C-24508 AND MATE WITH ANY PLUG CONNECTOR WITH SAME INSERT ARRANGEMENT.
- 3. MARKED WITH .047 [1.19]-.062 [1.57] HIGH CHARACTERS. FAR SIDE REFERS TO THE WIDE SIDE OF THE KEYSTONE. NEAR SIDE REFERS TO THE NARROW SIDE OF THE KEYSTONE. IF THE FRONT SHELL IS TOO SMALL FOR "AMP", AMP PART NUMBER AND DATE CODE, MARKING SHALL BE SPLIT AS FOLLOWS:
 A. AMP PART NUMBER ON REAR SHELL, NEAR SIDE.
 B. "AMP" AND DATE CODE ON FRONT SHELL, NEAR SIDE.
- 4. POINT OF ELECTRICAL ENGAGEMENT - AS MEASURED WITH A .0390 [0.991]-.0393 [0.998] DIA SQUARE ENDED TEST PIN.
- 5. THIS DRAWING SHALL BE INTERPRETED IN ACCORDANCE WITH APPLICABLE STANDARDS LISTED IN MIL-STD-100.
- 6. SOLDER DIP PER MIL-STD-2000 COMPOSITION S63 CONFORMING TO QQ-S-571 IN THE ENTIRE AREA OF DIMENSION SHOWN.



Tyco Electronics
 NOTICE
 NDT RELEASED
 PRELIMINARY



.944 [23.82]	2.168 [55.58]	.620 [15.75]	.428 [10.87]	2.411 [61.34]	2.069 [52.55]	2.650 [67.31]	MS18277-1	50	5	1-1218636-0
.524 [13.31]	2.168 [55.07]	.590 [14.99]	.418 [10.62]	2.401 [60.99]	2.059 [52.30]	2.620 [66.55]				
DIM J	DIM H	DIM E	DIM D	DIM C	DIM B	DIM A	INSERT ARRANGEMENT	NO OF POS	SHELL SIZE	AMP PART NO.

THIS DRAWING IS A CONTROLLED DOCUMENT.

REVISIONS: 1-1218636-0

DATE: 00779

SIZE: 4:1

RECEP TABLE ASSY, AMP/UMITE RIGHT ANGLE, SERIES 109 SIZE 5

CUSTOMER DRAWING