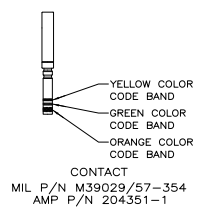
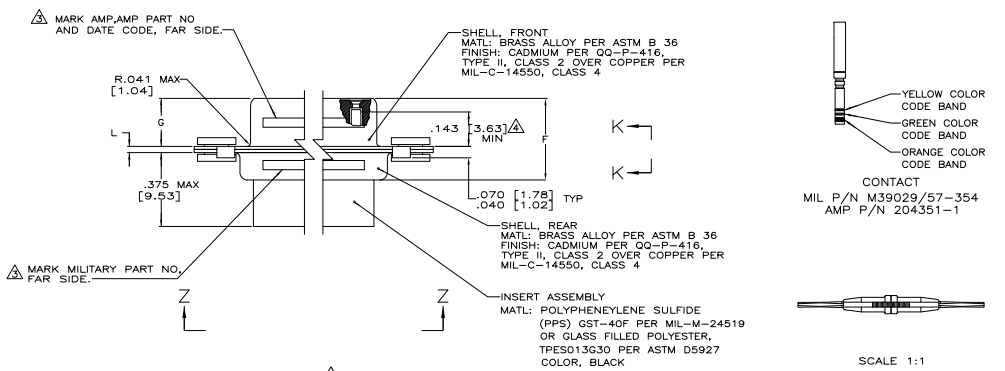
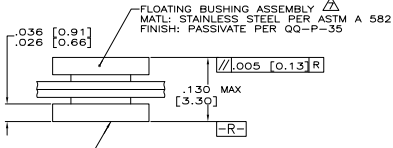


- THIS CONNECTOR ASSEMBLY IS SUPPLIED WITH METAL CONTACT RETENTION CLIPS INSTALLED IN THE INSERT ASSEMBLY.
- THIS CONNECTOR ASSEMBLY MEETS THE REQUIREMENTS OF MIL-C-24308 AND MATES WITH ANY PLUG CONNECTOR WITH SAME INSERT ARRANGEMENT.
- THE PART NUMBER MARKED ON THE CONNECTOR DIFFERS FROM THE PART NUMBER ORDERED DUE TO THE MARKING REQUIREMENTS OF MIL-C-24308/6 (PART NUMBER MARKED ON CONNECTOR REPRESENTS CONNECTOR ASSEMBLY WITH CONTACTS). MARK WITH .047 [1.19]-.062 [1.57] HIGH CHARACTERS. FAR SIDE REFERS TO THE WIDE SIDE OF THE KEYSTONE. NEAR SIDE REFERS TO THE NARROW SIDE OF THE KEYSTONE. IF THE REAR SHELL IS TOO SMALL FOR THE ENTIRE MILITARY PART NUMBER, MARKING SHALL BE LOCATED AS FOLLOWS:
  - "M24308" ON FRONT SHELL, FAR SIDE.
  - SLASH SHEET AND DASH NUMBER ON REAR SHELL, FAR SIDE.
  - "AMP" AND DATE CODE ON FRONT SHELL, NEAR SIDE.
  - AMP PART NUMBER ON REAR SHELL, NEAR SIDE.
 IF THE FRONT SHELL IS TOO SMALL FOR "AMP", AMP PART NUMBER AND DATE CODE THEN SPLIT AS FOLLOWS:
  - AMP PART NUMBER ON REAR SHELL, NEAR SIDE.
  - "AMP" AND DATE CODE ON FRONT SHELL, NEAR SIDE.
  - MILITARY PART NUMBER ON REAR SHELL, FAR SIDE.
- POINT OF ELECTRICAL ENGAGEMENT - AS MEASURED WITH A .0295 [0.749] - .0305 [0.775] DIAMETER SQUARE ENDED TEST PIN. CONTACT SHOWN INSTALLED FOR DIMENSIONAL REFERENCE ONLY.
- MAXIMUM WIRE INSULATION TO BE USED WITH THIS CONNECTOR ASSEMBLY IS .054 [1.37] DIAMETER.
- FOR CONTACT CRIMPING INSTRUCTION SHEET REFER TO AMP IS 408-7516. FOR CONTACT INSTALLATION AND REMOVAL INSTRUCTION SHEET REFER TO AMP IS 408-7508.
- FLOAT SPECIFICATIONS ARE .004 [0.10]-.012 [0.30] VERTICALLY AND .026 [0.66]-.036 [0.91] HORIZONTALLY.
- PART NUMBER FOR ORDERING.
- DIMENSIONS AND TOLERANCES PER ANSI Y14.5M-1982.
- THIS DRAWING SHALL BE INTERPRETED IN ACCORDANCE WITH APPLICABLE STANDARDS LISTED IN MIL-STD-100.



SCALE 1:1  
 INSTALLATION & REMOVAL TOOL  
 MIL P/N M81969/1-04  
 AMP P/N 91067-1  
 QTY 1



VIEW K-K  
 SCALE 10:1

	.544 [13.82]	2.188 [55.58]		.620 [15.75]	.428 [10.87]	2.411 [61.24]	2.069 [52.55]	2.650 [67.31]	M518277-2	78	5	M24308/6-279F	M24308/6-268F	593044-5	593046-5
.049 [1.24]	.524 [13.31]	2.188 [55.07]		.590 [14.99]	.418 [10.62]	2.401 [60.99]	2.059 [52.30]	2.620 [66.93]	M518276-2	62	4	M24308/6-278F	M24308/6-267F	593044-4	593046-4
.029 [0.74]		2.282 [57.96]				2.495 [63.37]	2.154 [54.21]	2.714 [69.29]	M518275-2	44	3	M24308/6-277F	M24308/6-266F	593044-3	593046-3
	.432 [10.97]	1.635 [41.53]	.248 [6.30]	.439 [11.15]		1.857 [47.17]	1.516 [38.51]	2.103 [53.42]	M518274-2	26	2	M24308/6-276F	M24308/6-265F	593044-2	593046-2
.040 [1.02]	.412 [10.46]	1.615 [41.02]	.238 [6.05]	.419 [10.64]	.509 [12.93]	1.847 [46.91]	1.508 [38.25]	2.073 [52.65]	M518273-2	15	1	M24308/6-275F	M24308/6-264F	593044-1	593046-1
.020 [0.51]		1.073 [27.25]			.478 [12.17]	1.317 [33.45]	.976 [24.79]	1.556 [39.52]							
		.749 [19.53]				.989 [25.12]	.648 [16.46]	1.228 [31.19]							
		.749 [19.02]				.979 [24.87]	.638 [16.21]	1.198 [30.43]							

THIS DRAWING IS A CONTROLLED DOCUMENT

DESIGNED BY	REVIEWED BY	DATE
J. GILLMAN	J. GILLMAN	11-24-82

AMPLITE NONMAGNETIC RCPT ASSY WITH SIZE 22 CRIMP SOCKET CONTACTS AND TOOL SERIES 90. FLOATING BUSHING, SHELL SIZES 1 THRU 5

SEE CALLOUTS

CUSTOMER DRAWING