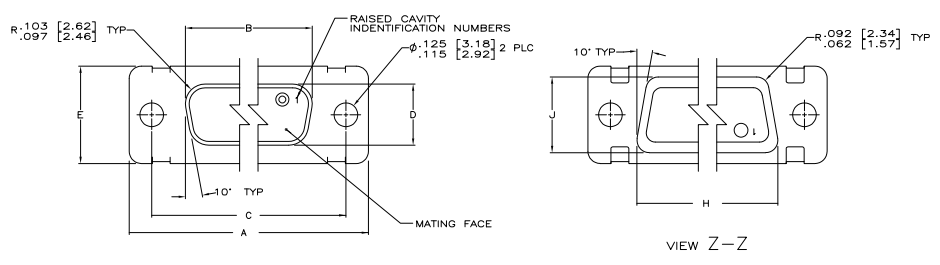
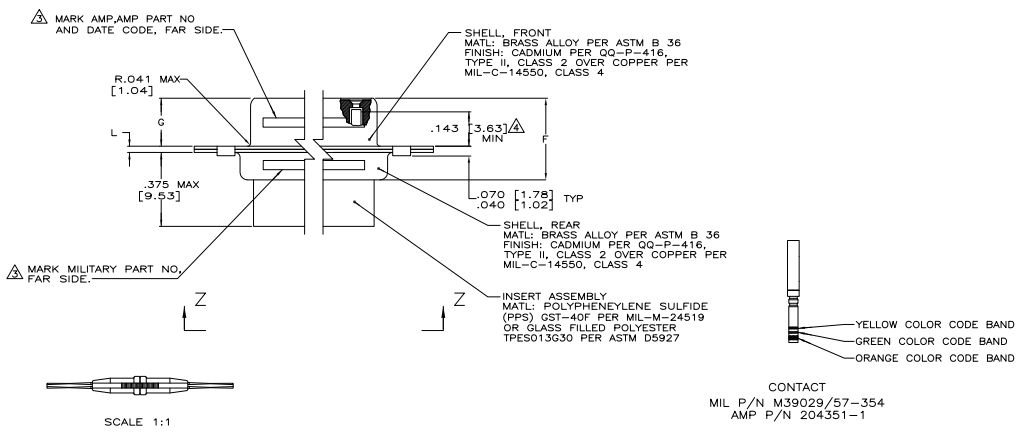


REV	DATE	DESCRIPTION	BY	CHK	APP
1					
2					
3					
4					
5					
6					
7					
8					



- THIS CONNECTOR ASSEMBLY IS SUPPLIED WITH METAL CONTACT RETENTION CLIPS INSTALLED IN THE INSERT ASSEMBLY.
- THIS CONNECTOR ASSEMBLY MEETS THE REQUIREMENTS OF MIL-C-24308 AND MATES WITH ANY PLUG CONNECTOR WITH THE SAME INSERT ARRANGEMENT.
- THE PART NUMBER MARKED ON THE CONNECTOR DIFFERS FROM THE PART NUMBER ORDERED DUE TO THE MARKING REQUIREMENTS OF MIL-C-24308/6 (PART NUMBER MARKED ON CONNECTOR REPRESENTS CONNECTOR ASSEMBLY WITH CONTACTS). MARK WITH .047 [1.19]-.062 [1.57] HIGH CHARACTERS. FAR SIDE REFERS TO THE WIDE SIDE OF THE KEYSTONE. NEAR SIDE REFERS TO THE NARROW SIDE OF THE KEYSTONE. IF THE REAR SHELL IS TOO SMALL FOR THE ENTIRE MILITARY PART NUMBER, MARKING SHALL BE LOCATED AS FOLLOWS:
 - A. "M24308" ON FRONT SHELL, FAR SIDE.
 - B. SLASH SHEET AND DASH NUMBER ON REAR SHELL, FAR SIDE.
 - C. "AMP" AND DATE CODE ON FRONT SHELL, NEAR SIDE.
 - D. AMP PART NUMBER ON REAR SHELL, NEAR SIDE.
 IF THE FRONT SHELL IS TOO SMALL FOR "AMP", AMP PART NUMBER AND DATE CODE, THEN SPLIT AS FOLLOWS:
 - A. AMP PART NUMBER ON REAR SHELL, NEAR SIDE.
 - B. "AMP" AND DATE CODE ON FRONT SHELL, NEAR SIDE.
 - C. MILITARY PART NUMBER ON REAR SHELL, FAR SIDE.



SCALE 1:1
 INSTALLATION & REMOVAL TOOL
 MIL P/N M81969/1-04
 AMP P/N 91067-1
 QTY 1

	.544 [13.82]	2.188 [55.58]		.620 [15.75]	.428 [10.87]	2.411 [61.24]	2.069 [52.55]	2.650 [67.31]												
.049 [1.24]	.924 [23.31]	2.188 [55.58]		.990 [24.99]	.418 [10.62]	2.401 [60.99]	2.059 [52.30]	2.620 [66.95]												
.029 [0.74]		2.282 [57.96]				2.505 [63.63]	2.184 [54.97]	2.744 [69.70]												
		2.362 [59.45]				2.495 [63.37]	2.154 [54.71]	2.714 [68.94]												
		1.635 [41.53]	.248 [6.30]	.439 [11.15]		1.857 [47.17]	1.516 [38.51]	2.103 [53.42]												
.432 [10.97]		1.615 [41.02]	.238 [6.05]	.419 [10.64]		1.847 [46.91]	1.508 [38.25]	2.073 [52.65]												
.040 [1.02]	.412 [10.46]	1.093 [27.76]			.509 [12.93]	1.317 [33.46]	.976 [24.79]	1.556 [39.52]												
.020 [0.51]		1.073 [27.25]			.479 [12.17]	1.307 [33.20]	.966 [24.54]	1.526 [38.76]												
		.769 [19.53]				.989 [25.12]	.648 [16.46]	1.228 [31.19]												
		.749 [19.02]				.979 [24.87]	.638 [16.21]	1.198 [30.43]												

REV	DATE	DESCRIPTION	BY	CHK	APP
1					
2					
3					
4					
5					
6					
7					
8					