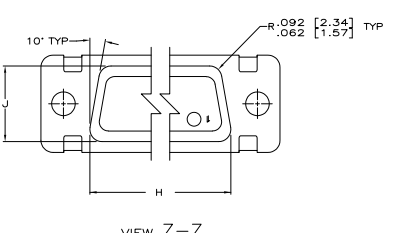
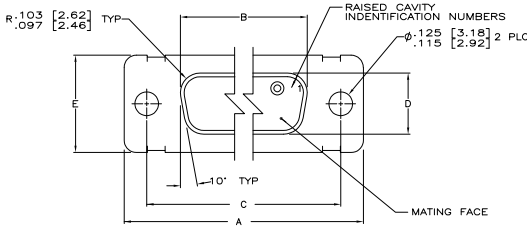
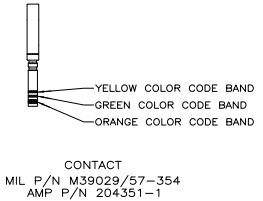
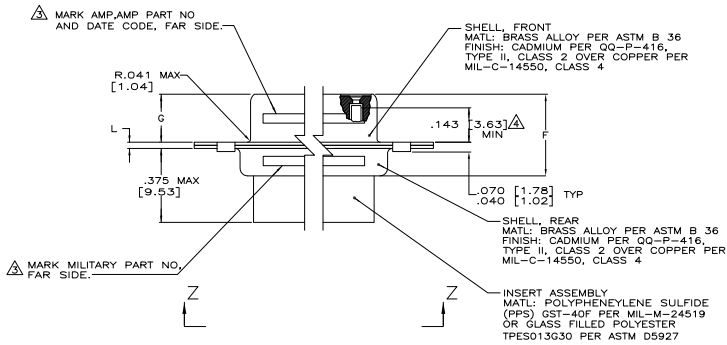


REV	DATE	BY	CHKD	DESCRIPTION	REV	DATE	BY	CHKD	DESCRIPTION
1									
2									
3									
4									
5									
6									
7									
8									



- THIS CONNECTOR ASSEMBLY IS SUPPLIED WITH METAL CONTACT RETENTION CLIPS INSTALLED IN THE INSERT ASSEMBLY.
- THIS CONNECTOR ASSEMBLY MEETS THE REQUIREMENTS OF MIL-C-24308 AND MATES WITH ANY PLUG CONNECTOR WITH SAME INSERT ARRANGEMENT.
- MARK WITH .047 [1.19]-.062 [1.57] HIGH CHARACTERS. FAR SIDE REFERS TO THE WIDE SIDE OF THE KEYSTONE. NEAR SIDE REFERS TO THE NARROW SIDE OF THE KEYSTONE. IF THE REAR SHELL IS TOO SMALL FOR THE ENTIRE MILITARY PART NUMBER, MARKING SHALL BE LOCATED AS FOLLOWS:**
  - "M24308" ON FRONT SHELL, FAR SIDE.
  - SLASH SHEET AND DASH NUMBER ON REAR SHELL, FAR SIDE.
  - "AMP" AND DATE CODE ON FRONT SHELL, NEAR SIDE.
  - AMP PART NUMBER ON REAR SHELL, NEAR SIDE.
- IF THE FRONT SHELL IS TOO SMALL FOR "AMP", AMP PART NUMBER AND DATE CODE, THEN SPLIT AS FOLLOWS:
  - AMP PART NUMBER ON REAR SHELL, NEAR SIDE.
  - "AMP" AND DATE CODE ON FRONT SHELL, NEAR SIDE.
  - MILITARY PART NUMBER ON REAR SHELL, FAR SIDE.



- POINT OF ELECTRICAL ENGAGEMENT - AS MEASURED WITH .0295 [0.749] - .0305 [0.775] DIAMETER SQUARE ENDED TEST PIN. CONTACT SHOWN INSTALLED FOR DIMENSIONAL REFERENCE ONLY.
- MAXIMUM WIRE INSULATION TO BE USED WITH THIS CONNECTOR ASSEMBLY IS .054 [1.37] DIAMETER.
- FOR CONTACT CRIMPING INSTRUCTION SHEET REFER TO AMP IS 408-7516. FOR CONTACT INSTALLATION AND REMOVAL INSTRUCTION SHEET REFER TO AMP IS 408-7508.
- PART NUMBER FOR ORDERING.
- DIMENSIONS AND TOLERANCES PER ANSI Y14.5M-1982.
- THIS DRAWING SHALL BE INTERPRETED IN ACCORDANCE WITH APPLICABLE STANDARDS LISTED IN MIL-STD-100.

	L	J	H	G	F	E	D	C	B	A	INSERT ARRANGEMENT	NO OF POS	SHELL SIZE	PACKAGE MILITARY P/N	MILITARY P/N ON CONNECTOR	AMP P/N ON CONNECTOR	PART NUMBER
		.544 [13.82]	2.188 [55.58]			.620 [15.75]	.428 [10.87]	2.411 [61.24]	2.069 [52.55]	2.650 [67.31]	M518277-2	78	5	M24308/6-15F	M24308/6-15F	593041-5	593041-5
.049 [1.24]		.924 [23.31]	2.188 [55.57]			.990 [25.15]	.418 [10.62]	2.401 [60.99]	2.059 [52.30]	2.620 [66.93]	M518276-2	62	4	M24308/6-14F	M24308/6-14F	593041-4	593041-4
.029 [0.74]			2.282 [57.96]					2.495 [63.37]	2.154 [54.71]	2.714 [69.04]	M518275-2	44	3	M24308/6-13F	M24308/6-13F	593041-3	593041-3
			2.262 [57.45]					1.857 [47.17]	1.516 [38.51]	2.103 [53.42]	M518274-2	26	2	M24308/6-12F	M24308/6-12F	593041-2	593041-2
		.432 [10.97]	1.635 [41.53]	.248 [6.30]	.439 [11.15]	.509 [12.93]	.316 [8.03]	1.847 [46.91]	1.508 [38.25]	2.073 [52.65]	M518273-2	15	1	M24308/6-11F	M24308/6-11F	593041-1	593041-1
.040 [1.02]		.412 [10.46]	1.615 [41.02]	.238 [6.05]	.419 [10.64]	.478 [12.17]	.306 [7.77]	1.317 [33.46]	.976 [24.79]	1.556 [39.52]							
.020 [0.51]			1.093 [27.76]					1.307 [33.20]	.988 [24.54]	1.526 [38.76]							
			.749 [19.53]					.989 [25.12]	.648 [16.46]	1.228 [31.19]							
			.749 [19.02]					.979 [24.87]	.638 [16.21]	1.198 [30.43]							

THIS DRAWING IS A CONTROLLED DOCUMENT

DESIGNED BY	REVISIONS	DATE
CHKD BY	1	11-18-82
APP'D BY		
DATE		

Customer Drawing: A100779G=593041