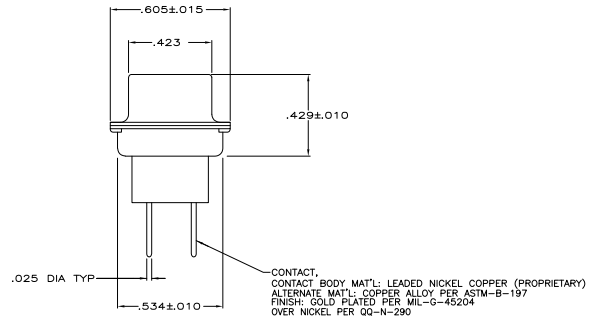
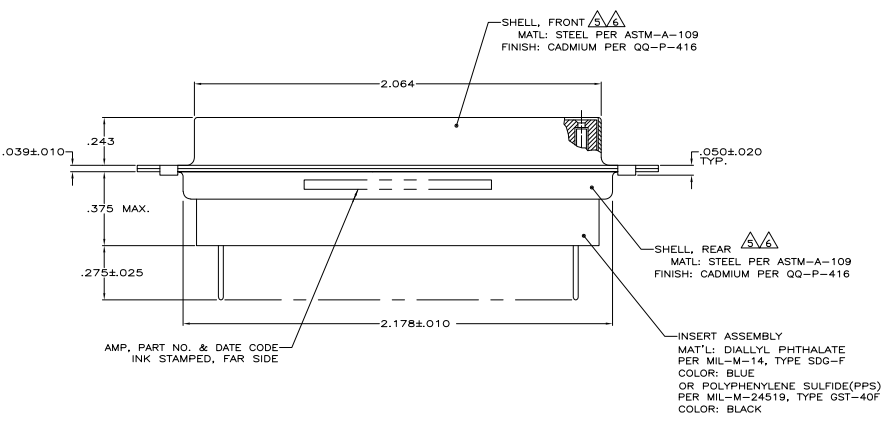
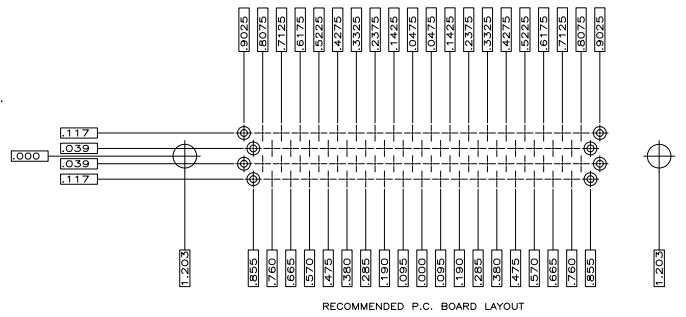
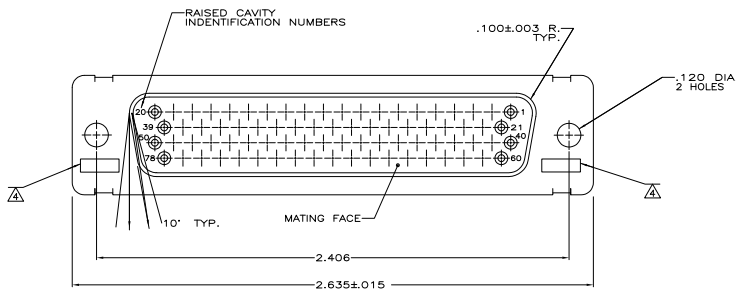


REV	DATE	DESCRIPTION	BY	CHK	APP
DF	DO				
H		REV PER ECO 05-01481			



- .040 DIA HOLE IS RECOMMENED FOR P.C. BOARD.
 - CONNECTOR MATES WITH ANY AMP 78 POSN PLUG.
 - REPLACEMENT SOCKET AMP# 207684-4.
- UL/CSA DESIGNATION STAMPED IN THIS AREA, OPTIONAL.
- FINISH: CADMIUM PER QQ-P-614.
- FINISH: ZINC PLATE PER ASTM-B-633 .000200-.000400 THK WITH SUPPLEMENTARY CHROMATE (Cr3+).

THIS DRAWING IS A CONTROLLED DOCUMENT.		REV. C. THOMAS 1-8-88	AMP	5-208876-1
DESIGNED BY: J. BALEW II		REV. B. BALEW II 1-8-88	AMP	208876-1
CHECKED BY: J. BALEW II		REV. A. BALEW II 1-8-88	AMP	208876-1
DRAWN BY: J. BALEW II		REV. A. BALEW II 1-8-88	AMP	208876-1
DATE: 1-8-88		REV. A. BALEW II 1-8-88	AMP	208876-1
PART NO: 208876-1		REV. A. BALEW II 1-8-88	AMP	208876-1
DESCRIPTION: AMP/IMITE 78 POSN. RCPT. ASSY., WITH LEADED POSTED CONTACTS, SIZE 5, SERIES 90		REV. A. BALEW II 1-8-88	AMP	208876-1
CUSTOMER DRAWING		REV. A. BALEW II 1-8-88	AMP	208876-1