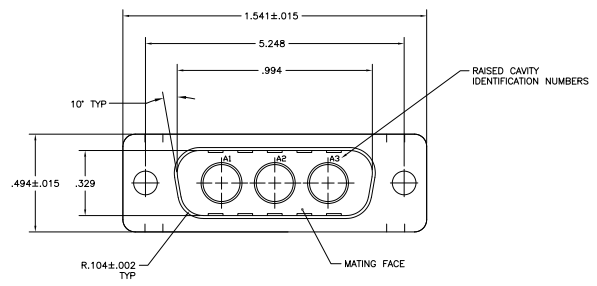
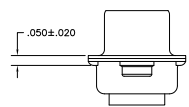
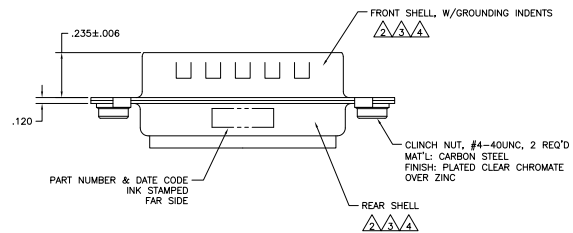


REV	DATE	DESCRIPTION	BY	CHK	APP
DF	DO				
C		REVISED PER ECO-09-012539			



- 1. THIS PLUG WILL MATE WITH ANY 3C3, SIZE 2 RECEPTACLE IN AMPLIMITE SERIES.
- △ STEEL, CLASS G PER ASTM-A-109.
- △ FINISH: TIN PER ASTM-B-545 .000200 MIN THK OVER COPPER PER AMS2418 .000100-.000200 THK.
- △ FINISH: TIN PER ASTM-B-545 .000200 MIN THK OVER COPPER PER AMS2418 .000100-.000200 THK.



PRELIMINARY NOT RELEASED FOR PRODUCTION	△△	5-449579-1
RESTRICTED	-	449579-2
	△△	449579-1
REMARKS		PART NO.

THIS DRAWING IS A CONTROLLED DOCUMENT.		DATE	11/03/03	REV	1	BY	J. GENEV	CHKD	J. GENEV	DATE	11/03/03
DESIGNED	J. GENEV	DATE	11/03/03	REV	1	BY	J. GENEV	CHKD	J. GENEV	DATE	11/03/03
DRAWN	J. GENEV	DATE	11/03/03	REV	1	BY	J. GENEV	CHKD	J. GENEV	DATE	11/03/03
CHECKED	J. GENEV	DATE	11/03/03	REV	1	BY	J. GENEV	CHKD	J. GENEV	DATE	11/03/03
APPROVED	J. GENEV	DATE	11/03/03	REV	1	BY	J. GENEV	CHKD	J. GENEV	DATE	11/03/03
CUSTOMER DRAWING		SIZE	A1	DATE	00779	DRAWN NO.	G=449579	RESTRICTED TO		DATE	4-1