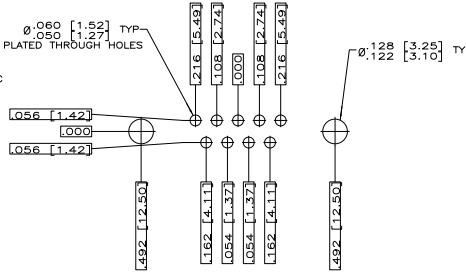
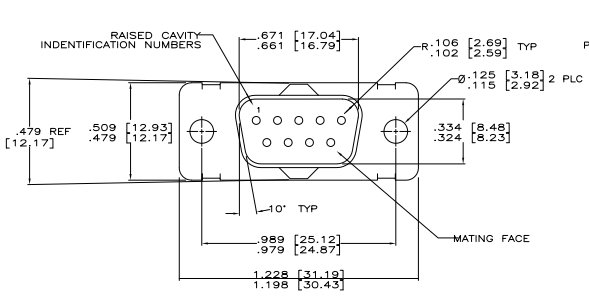
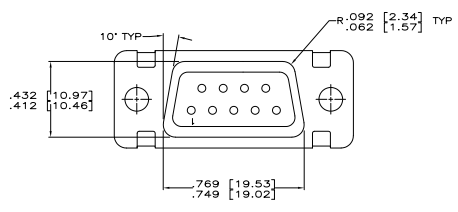
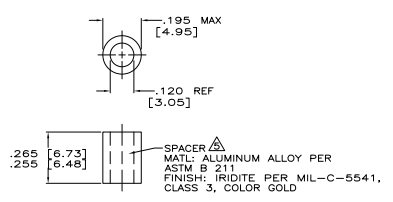
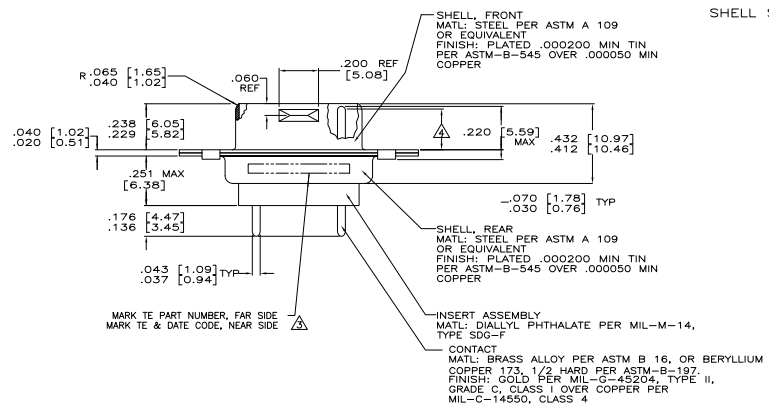


REV	DATE	DESCRIPTION	BY	APP
1	24-03-08	CT	RL	
2		REVISED PER ECO-09-00886		



RECOMMENDED P.C. BOARD LAYOUT
 SHELL SIZE 1 (9 POSITION) Δ

- Δ TRUE POSITION TOLERANCE FOR P.C. BOARD LAYOUT IS .010 [0.25] AT MAX MATERIAL CONDITION. SUGGESTED BOARD THICKNESS IS .094 [2.39]
- 2. THE CONNECTORS DESCRIBED IN THIS DOCUMENT MEET THE REQUIREMENTS OF MIL-C-24308 AND MATE WITH ANY RECEPTACLE CONNECTOR WITH SAME INSERT ARRANGEMENT, EXCEPT AS NOTED DIMENSIONALLY HEREIN. SALT SPRAY PER MIL-C-24308 NOT APPLICABLE.
- Δ MARK WITH .047 [1.19]-.062 [1.57] HIGH CHARACTERS. FAR SIDE REFERS TO THE WIDE SIDE OF THE KEYSTONE. NEAR SIDE REFERS TO THE NARROW SIDE OF THE KEYSTONE.
- Δ REQUIREMENT FOR FULL PIN DIAMETER EXTENSION IS .159 [4.04] MIN.
- Δ SPACERS (QTY 2) ARE SUPPLIED WITH CONNECTORS (NOT ATTACHED TO THE CONNECTOR).
- 6. DIMENSIONS AND TOLERANCES PER ANSI Y14.5M-1982.
- 7. THIS DRAWING SHALL BE INTERPRETED IN ACCORDANCE WITH APPLICABLE STANDARDS LISTED IN MIL-STD-100.



MS18273-1	9	1	449568-1
INSERT ARRANGEMENT	NO OF POS	ARRANGEMENT	PART NUMBER
THIS DRAWING IS A CONTROLLED DOCUMENT. CONTROLLED BY: TDS ELECTRONICS CORPORATION DRAWN BY: J. GENE [Signature] CHECKED BY: J. GENE [Signature] DATE: 09/08/08 PROJECT: AMPLITE PLUG ASSY WITH SIZE 20 STRAIGHT POSTED P.C. BOARD CONTACTS, SERIES 108, SHELL SIZE 1 PART: MIL-C-24308 SIZE: A1 DRAWING NO: 00779 CUSTOMER: 449568 SHEET: 1 OF 1			