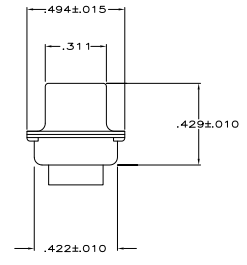
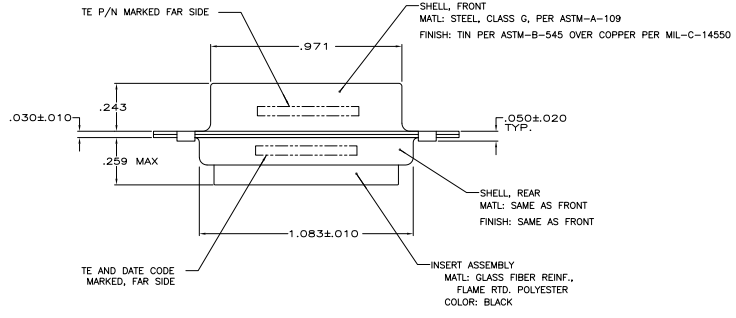
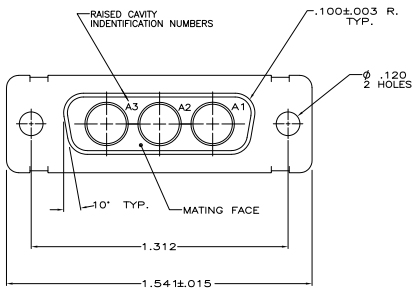


THIS DRAWING IS UNPUBLISHED  
 RECEIVED FOR REPRODUCTION  
 © 2005 TTI ELECTRONICS CORPORATION ALL INFORMATION IS UNCLASSIFIED

REV	DATE	DESCRIPTION	BY	CHK	APP
DF	DO				
E		REVISED PER ECO-09-012539			

1. THIS RECEPTACLE WILL MATE WITH ANY 3C3, SIZE 2 PLUG IN AMPLIMITE SERIES.
2. UL/CSA DESIGNATION STAMPED THIS AREA, OPTIONAL.
- ⚠ THIS KIT SUPPLIED WITH 2 CONTACTS, TE P/N 212008-1, WHICH IS DESIGNED FOR AWG 12 TO 14.
- ⚠ THIS KIT SUPPLIED WITH 2 CONTACTS, TE P/N 212014-1, WHICH IS DESIGNED FOR AWG 16 TO 18.
5. FOR CONTACT CRIMPING INSTRUCTIONS REFER TO TE 157516.
6. CONTACT REMOVAL TOOL: TE P/N 58095-1.



REMARKS	449560-2
PART NO.	449560-1

THIS DRAWING IS A CONTROLLED DOCUMENT.		E. POLYSIELA (MGR)		TTI ELECTRONICS	
DESIGNER: J. HENSLY		CHECKED: J. HENSLY		DATE: 09/01/05	
DRAWN: J. HENSLY		APPROVED: J. HENSLY		PART NO: 449560-1	
DATE: 09/01/05		REV: 1		DESCRIPTION: RECEPTACLE KIT, AMPLIMITE, 3C3, SIZE 2, SERIES 109, COAX W/2 CONTACTS	
CUSTOMER DRAWING		DRAWING NO: A100779		REVISED TO: 449560	