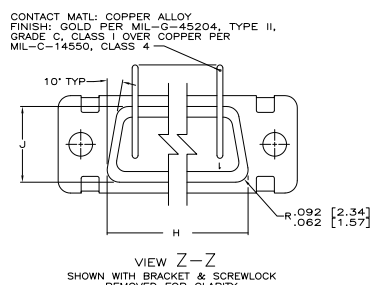
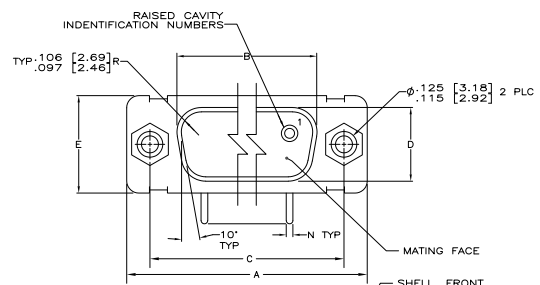
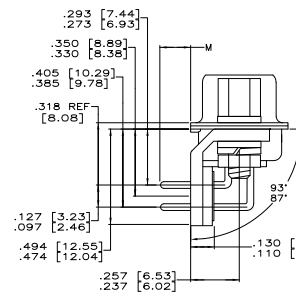
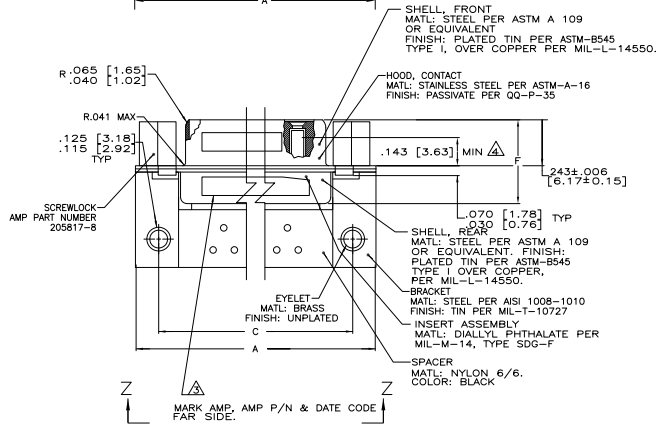


REV	DATE	DESCRIPTION	BY	CHK	APP
1					
2					
3					
4					
5					
6					
7					
8					

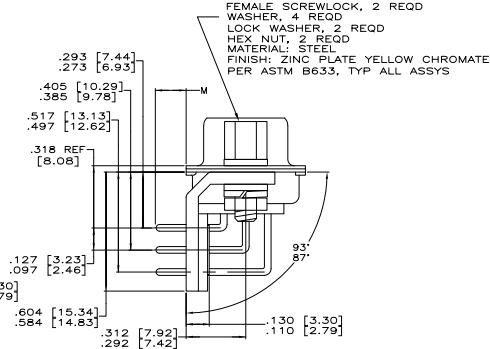


- △ SEE SHEET 2 FOR RECOMMENDED P.C. BOARD LAYOUT. TRUE POSITION TOLERANCE FOR P.C. BOARD LAYOUT IS .010 [0.25] AT MAX MATERIAL CONDITION. SUGGESTED BOARD THICKNESS IS .094 [2.39]
- 2. THE CONNECTORS DESCRIBED IN THIS DOCUMENT MEET THE REQUIREMENTS OF MIL-C-24308 AND MATE WITH ANY RECEPTACLE CONNECTOR WITH SAME INSERT ARRANGEMENT.
- △ MARK WITH .047-.062 HIGH CHARACTERS, PER 115-10002-2. FAR SIDE REFERS TO THE WIDE SIDE OF THE KEYSTONE. IF THE REAR SHELL IS TOO SMALL FOR THE REQUIRED MARKING, STAMPING SHALL BE LOCATED AS FOLLOWS:
 - A. AMP AND DATE CODE ON FRONT SHELL, FAR SIDE.
 - B. AMP PART NUMBER ON REAR SHELL, FAR SIDE.
- △ POINT OF ELECTRICAL ENGAGEMENT AS MEASURED WITH A .039 [0.99]-.0393 [1.00] DIAMETER SQUARE ENDED TEST PIN.
- 5. DIMENSIONS AND TOLERANCES PER ANSI Y14.5M-1982.
- 6. THIS DRAWING SHALL BE INTERPRETED IN ACCORDANCE WITH APPLICABLE STANDARDS LISTED IN MIL-STD-100.

VIEW Z-Z
 SHOWN WITH BRACKET & SCREWLOCK
 REMOVED FOR CLARITY



SHELL SIZES 1 THRU 4 CONTACT CONFIGURATION



SHELL SIZE 5 CONTACT CONFIGURATION

N	M	J	H	F	E	D	C	B	A	INSERT ARRANGEMENT	NO. OF PINS	SHELL SIZE	PART NUMBER
.033 [0.84]	.176 [4.47]	.544 [13.82]	2.188 [55.58]	.620 [15.75]	.428 [10.87]	2.411 [61.24]	2.069 [52.55]	2.650 [67.31]	MS18277-1	50	5	448694-5	
.027 [0.69]	.136 [3.45]	.524 [13.31]	2.188 [55.58]	.590 [14.99]	.418 [10.62]	2.401 [60.99]	2.059 [52.29]	2.620 [66.55]	MS18276-1	37	4	448694-4	
		.432 [10.97]	1.815 [46.02]	.439 [11.15]	.334 [8.03]	1.847 [46.91]	1.506 [38.25]	2.073 [52.65]	MS18275-1	25	3	448694-3	
		.412 [10.46]	1.093 [27.76]	.419 [10.64]	.306 [7.77]	1.317 [33.45]	.976 [24.79]	1.556 [39.52]	MS18274-1	15	2	448694-2	
			1.073 [27.25]			1.307 [33.20]	.966 [24.54]	1.526 [38.76]	MS18273-1	9	1	448694-1	
			.749 [19.53]			.989 [25.12]	.648 [16.46]	1.228 [31.19]					
			.749 [19.02]			.979 [24.87]	.638 [16.20]	1.198 [30.43]					

THIS DRAWING IS A CONTROLLED DOCUMENT.

APPROVED: [Signature] DATE: 03-28-04

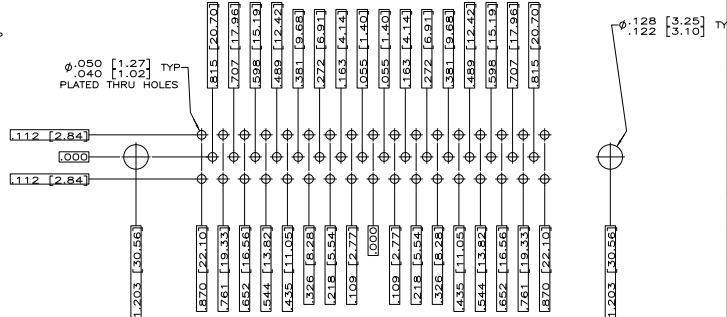
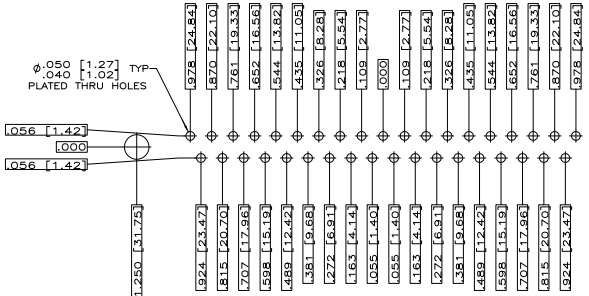
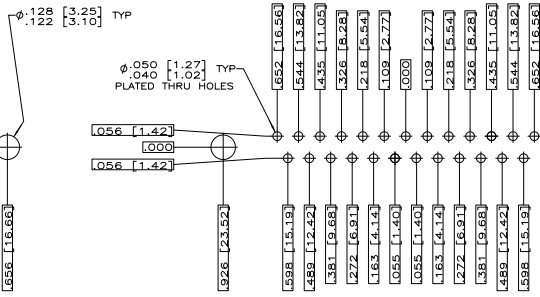
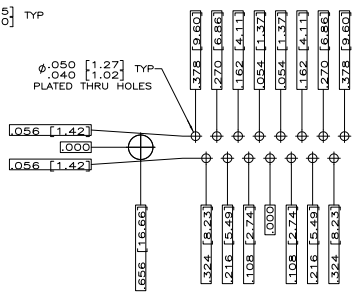
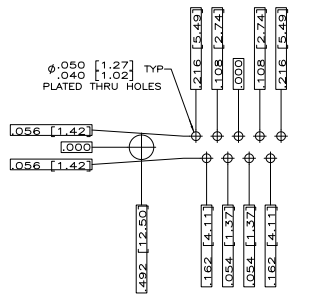
DESIGNED: [Signature] DATE: 03-28-04

DATE: 03-28-04

DESCRIPTION: AMPLITE RECEPTACLE ASSY W/ SIZE 20 RIGHT ANGLE P.C. BOARD CONTACTS SERIES 100, SHELL SIZES 1 THRU 5

SIZE: 4:1

CUSTOMER DRAWING: 00779G-448694



THIS DRAWING IS A CONTROLLED DOCUMENT.		REVISED DATE: 03-08-01	REVISED BY: J. SIKER	03-08-01
DRAWN BY: J. ANSEY		03-08-01	TYS Electronics Corporation Harrisburg, PA 17105-3608	
CHECKED BY: J. ANSEY		03-08-01	AMPLIMITE RECEPTACLE ASSY W/SIZE 20 RIGHT ANGLE PCB CONTACTS SERIES 100, SHELL SIZES 1 THRU 5	
DATE: 03/08/01		DRAWING NO: A100779	C=448694	REVISED TO: -
CUSTOMER DRAWING		SHEET 4-1 OF 2		