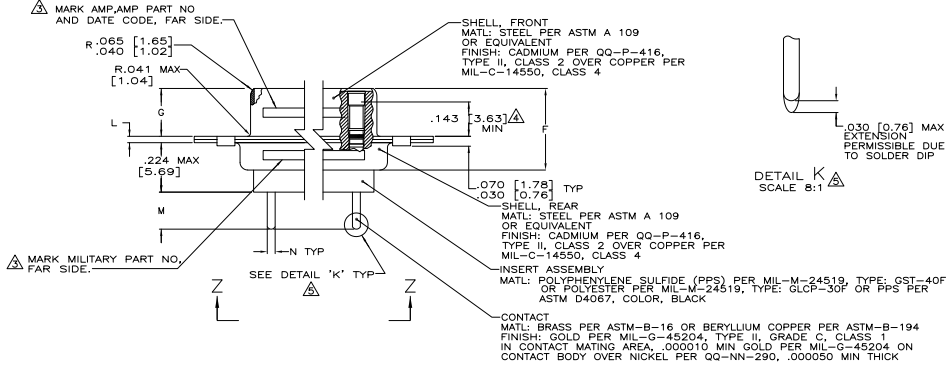
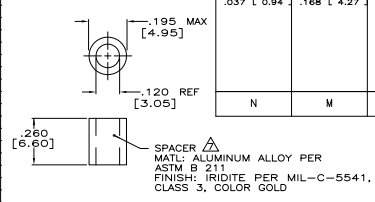


- SEE SHEET 2 FOR RECOMMENDED P.C. BOARD LAYOUT. TRUE POSITION TOLERANCE FOR P.C. BOARD LAYOUT IS .010 [0.25] AT MAX MATERIAL CONDITION. SUGGESTED BOARD THICKNESS IS .125 [3.18]
- THE CONNECTORS DESCRIBED IN THIS DOCUMENT MEET THE REQUIREMENTS OF MIL-C-24308 AND MATE WITH ANY PLUG CONNECTOR WITH SAME INSERT ARRANGEMENT.
- MARK WITH .047 [1.19]-.062 [1.57] HIGH CHARACTERS. FAR SIDE REFERS TO THE WIDE SIDE OF THE KEYSTONE. NEAR SIDE REFERS TO THE NARROW SIDE OF THE KEYSTONE. IF THE REAR SHELL IS TOO SMALL FOR THE ENTIRE MILITARY PART NUMBER, MARKING SHALL BE LOCATED AS FOLLOWS:
 - A. "M24308" ON FRONT SHELL, FAR SIDE.
 - B. SLASH SHEET AND DASH NUMBER ON REAR SHELL, FAR SIDE.
 - C. "AMP" AND DATE CODE ON FRONT SHELL, NEAR SIDE.
 - D. AMP PART NUMBER ON REAR SHELL, NEAR SIDE.
- IF THE FRONT SHELL IS TOO SMALL FOR "AMP", AMP PART NUMBER AND DATE CODE, THEN SPLIT AS FOLLOWS:
 - A. AMP PART NUMBER ON REAR SHELL, NEAR SIDE.
 - B. "AMP" AND DATE CODE ON FRONT SHELL, NEAR SIDE.
 - C. MILITARY PART NUMBER ON REAR SHELL, FAR SIDE.

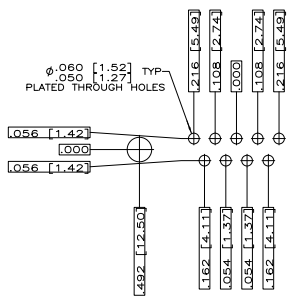


- POINT OF ELECTRICAL ENGAGEMENT - AS MEASURED WITH A .0390 [0.991]-.0393 [0.998] DIA SQUARE ENDED TEST PIN.
- SOLDER DIP PER MIL-STD-2000 COMPOSITION Sn63 CONFORMING TO QQ-S-571. COVERAGE SHALL BE COMPLETE TO A DISTANCE .020 [0.51] MAX FROM INSERT ASSEMBLY.
- THE SOLDER DIP PROCESS IS PERFORMED SUBSEQUENT TO THE COMPLETION OF PRODUCTION OF THE MILITARY QUALIFIED CONNECTOR. DIMENSIONS APPLY PRIOR TO SOLDER DIPPING.
- SPACERS (QTY 2) ARE SUPPLIED WITH CONNECTORS (NOT ATTACHED TO THE CONNECTOR).
- DIMENSIONS AND TOLERANCES PER ANSI Y14.5M-1982.
- THIS DRAWING SHALL BE INTERPRETED IN ACCORDANCE WITH APPLICABLE STANDARDS LISTED IN MIL-STD-100.

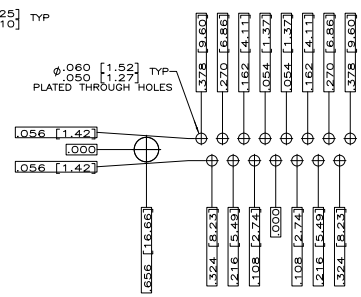
.043 [1.09]	.208 [5.28]	.040 [1.02]	.544 [13.82]	2.188 [55.58]	.620 [15.75]	.428 [10.87]	2.411 [61.24]	2.069 [52.55]	2.650 [67.31]	MS18277-1	50	5	M24308/23-23F	443978-5	1-443978-0	
.037 [0.94]	.168 [4.27]	.020 [0.51]	.524 [13.31]	2.168 [55.07]	.590 [14.99]	.418 [10.62]	2.401 [60.99]	2.059 [52.30]	2.620 [66.55]	MS18276-1	37	4	M24308/23-22F	443978-4	443978-9	
			2.282 [57.96]	2.282 [57.96]	2.495 [63.37]	2.154 [54.71]	2.714 [68.94]	2.857 [72.71]	1.516 [38.51]	2.103 [53.42]	MS18275-1	25	3	M24308/23-21F	443978-3	443978-8
			1.635 [41.53]	1.615 [41.02]	1.847 [46.91]	1.506 [38.25]	2.073 [52.65]	1.317 [33.45]	.976 [24.79]	1.056 [26.92]	MS18274-1	15	2	M24308/23-20F	443978-2	443978-7
			.432 [10.97]	1.093 [27.76]	1.307 [33.20]	.966 [24.54]	1.526 [38.76]	.989 [25.12]	.648 [16.46]	1.228 [31.19]	MS18273-1	9	1	M24308/23-19F	443978-1	443978-6
			.769 [19.53]	.749 [19.02]	.979 [24.87]	.638 [16.21]	1.198 [30.43]	.989 [25.12]	.648 [16.46]	1.228 [31.19]	MS18277-1	50	5	M24308/23-23F	443978-5	443978-9
			.544 [13.82]	2.188 [55.58]	.620 [15.75]	.428 [10.87]	2.411 [61.24]	2.069 [52.55]	2.650 [67.31]	MS18276-1	37	4	M24308/23-22F	443978-4	443978-8	
			.524 [13.31]	2.168 [55.07]	.590 [14.99]	.418 [10.62]	2.401 [60.99]	2.059 [52.30]	2.620 [66.55]	MS18275-1	25	3	M24308/23-21F	443978-3	443978-7	
			2.282 [57.96]	2.282 [57.96]	2.495 [63.37]	2.154 [54.71]	2.714 [68.94]	2.857 [72.71]	1.516 [38.51]	2.103 [53.42]	MS18274-1	15	2	M24308/23-20F	443978-2	443978-6
			1.635 [41.53]	1.615 [41.02]	1.847 [46.91]	1.506 [38.25]	2.073 [52.65]	1.317 [33.45]	.976 [24.79]	1.056 [26.92]	MS18273-1	9	1	M24308/23-19F	443978-1	443978-5
			.432 [10.97]	1.093 [27.76]	1.307 [33.20]	.966 [24.54]	1.526 [38.76]	.989 [25.12]	.648 [16.46]	1.228 [31.19]	MS18277-1	50	5	M24308/23-23F	443978-5	443978-9
			.769 [19.53]	.749 [19.02]	.979 [24.87]	.638 [16.21]	1.198 [30.43]	.989 [25.12]	.648 [16.46]	1.228 [31.19]	MS18276-1	37	4	M24308/23-22F	443978-4	443978-8
			.544 [13.82]	2.188 [55.58]	.620 [15.75]	.428 [10.87]	2.411 [61.24]	2.069 [52.55]	2.650 [67.31]	MS18275-1	25	3	M24308/23-21F	443978-3	443978-7	
			.524 [13.31]	2.168 [55.07]	.590 [14.99]	.418 [10.62]	2.401 [60.99]	2.059 [52.30]	2.620 [66.55]	MS18274-1	15	2	M24308/23-20F	443978-2	443978-6	
			2.282 [57.96]	2.282 [57.96]	2.495 [63.37]	2.154 [54.71]	2.714 [68.94]	2.857 [72.71]	1.516 [38.51]	2.103 [53.42]	MS18273-1	9	1	M24308/23-19F	443978-1	443978-5
			1.635 [41.53]	1.615 [41.02]	1.847 [46.91]	1.506 [38.25]	2.073 [52.65]	1.317 [33.45]	.976 [24.79]	1.056 [26.92]	MS18277-1	50	5	M24308/23-23F	443978-5	443978-9
			.432 [10.97]	1.093 [27.76]	1.307 [33.20]	.966 [24.54]	1.526 [38.76]	.989 [25.12]	.648 [16.46]	1.228 [31.19]	MS18276-1	37	4	M24308/23-22F	443978-4	443978-8
			.769 [19.53]	.749 [19.02]	.979 [24.87]	.638 [16.21]	1.198 [30.43]	.989 [25.12]	.648 [16.46]	1.228 [31.19]	MS18275-1	25	3	M24308/23-21F	443978-3	443978-7
			.544 [13.82]	2.188 [55.58]	.620 [15.75]	.428 [10.87]	2.411 [61.24]	2.069 [52.55]	2.650 [67.31]	MS18274-1	15	2	M24308/23-20F	443978-2	443978-6	
			.524 [13.31]	2.168 [55.07]	.590 [14.99]	.418 [10.62]	2.401 [60.99]	2.059 [52.30]	2.620 [66.55]	MS18273-1	9	1	M24308/23-19F	443978-1	443978-5	



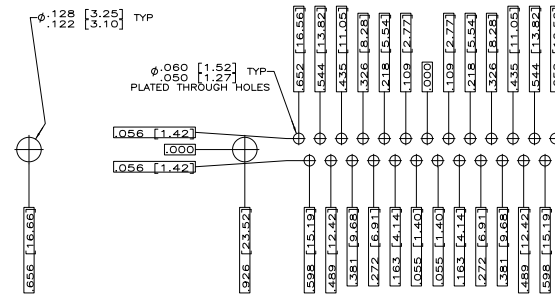
THIS DRAWING IS A CONTROLLED DOCUMENT		REV	DATE	DESCRIPTION
1				
2				
3				
4				
5				
6				
7				
8				



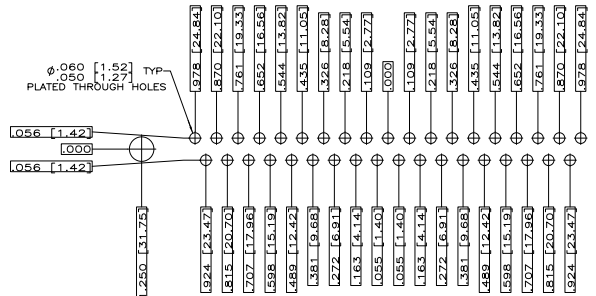
RECOMMENDED P.C. BOARD LAYOUT
SHELL SIZE 1 (9 POSITION) ▲



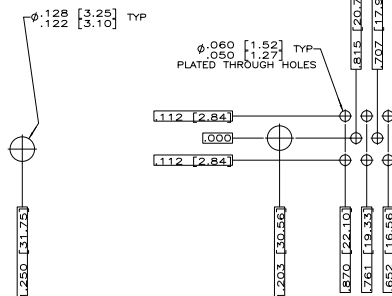
RECOMMENDED P.C. BOARD LAYOUT
SHELL SIZE 2 (15 POSITION) ▲



RECOMMENDED P.C. BOARD LAYOUT
SHELL SIZE 3 (25 POSITION) ▲



RECOMMENDED P.C. BOARD LAYOUT
SHELL SIZE 4 (37 POSITION) ▲



RECOMMENDED P.C. BOARD LAYOUT
SHELL SIZE 5 (50 POSITION) ▲

THIS DRAWING IS A CONTROLLED DOCUMENT.		DATE	BY	GROUP	REVISED
REVISIONS		DATE	BY	GROUP	REVISED
APPROVED		DATE	BY	GROUP	REVISED
DRAWN		DATE	BY	GROUP	REVISED
CHECKED		DATE	BY	GROUP	REVISED
SEE CALLOUTS		DATE	BY	GROUP	REVISED
CUSTOMER DRAWING		DATE	BY	GROUP	REVISED