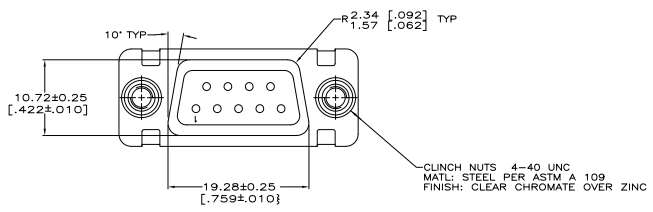
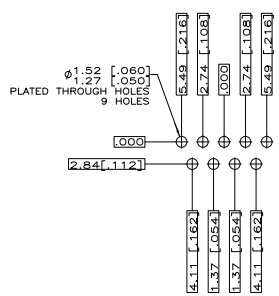
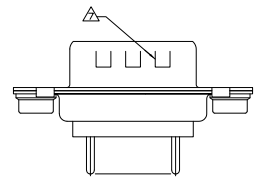
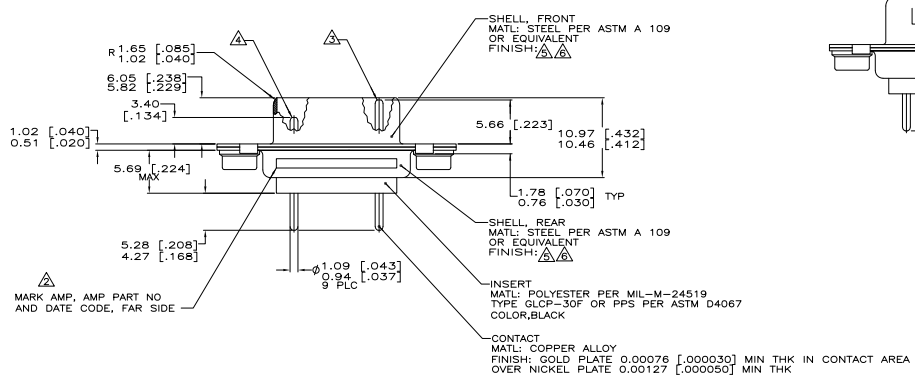
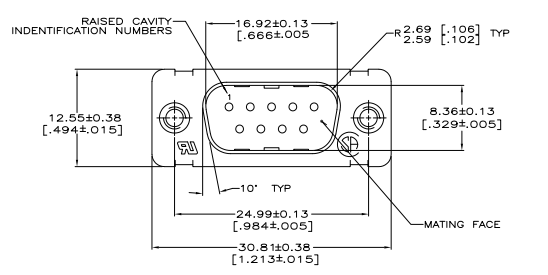


REV	DATE	DESCRIPTION	BY	CHK	APP
DF	DO				
C		REV PER ESD-07-01102			

- △ TRUE POSITION TOLERANCE FOR P.C. BOARD LAYOUT IS 0.25 [.010] AT MAX MATERIAL CONDITION. SUGGESTED BOARD THICKNESS IS 2.39 [.094].
- △ MARK WITH 1.19 [.047]-1.57 [.062] HIGH CHARACTERS. FAR SIDE REFERS TO THE WIDE SIDE OF THE KEYSTONE. NEAR SIDE REFERS TO THE NARROW SIDE OF THE KEYSTONE. IF THE REAR SHELL IS TOO SMALL FOR "AMP", AMP PART NUMBER, AND DATE CODE, THEN SPLIT AS FOLLOWS:
 A. AMP PART NUMBER ON REAR SHELL, NEAR SIDE.
 B. "AMP" AND DATE CODE ON REAR SHELL, FAR SIDE.
- △ REGULAR LENGTH CONTACT LOCATION: 1, 6, AND 9.
- △ SHORT LENGTH CONTACT LOCATION: 2 THRU 5, 7, AND 8.
- △ FINISH: CADMIUM PER QQ-P-416
- △ FINISH: TIN PLATED PER MIL-T-10727
- △ GROUNDING INDENT APPLIES TO TIN PLATE SHELLS ONLY. AMP PART NUMBER 443638-2.



RECOMMENDED P.C. BOARD LAYOUT △

443638-2	
443638-1	
SHELL FINISH	PART NUMBER

THIS DRAWING IS A CONTROLLED DOCUMENT.		DATE	REV	BY	APP
DATE	REV	BY	APP	Tti Electronics Corporation Harrisburg, PA 17105-3608	
DATE	REV	BY	APP	AMPLITE PLUG ASSEMBLY, LOW PROFILE, SIZE 20 POSTED P.C. BOARD CONTACTS, MAKE FIRST BREAK LAST, SERIES 100.	
DATE	REV	BY	APP	SIZE	DATE SIZE DRAWING NO
DATE	REV	BY	APP	A1	00779 443638
DATE	REV	BY	APP	CUSTOMER DRAWING	
DATE	REV	BY	APP	SIZE	4.1
DATE	REV	BY	APP	1	1
DATE	REV	BY	APP		C