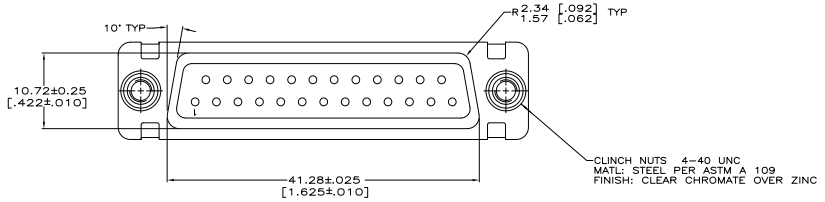
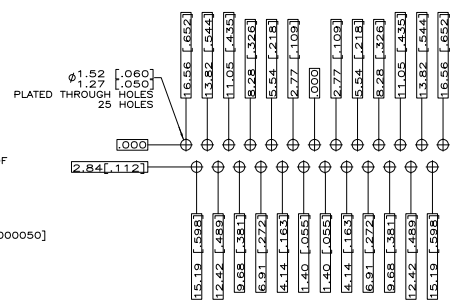
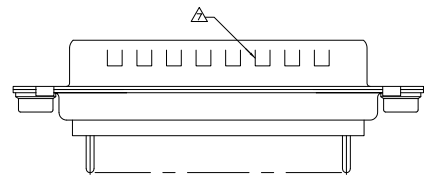
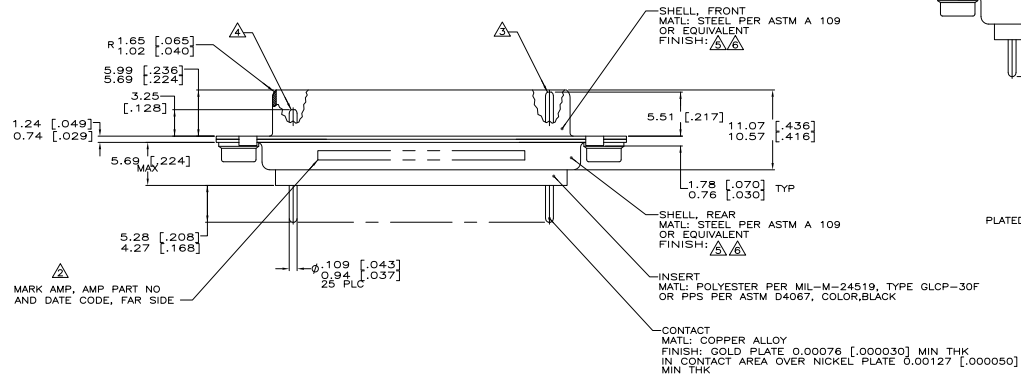
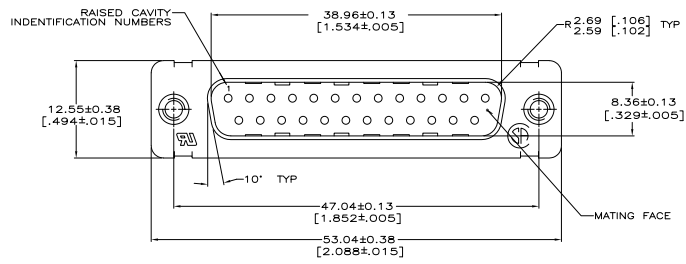


REV	DATE	DESCRIPTION	BY	CHK	APP
DF	DO				
C		REV PER ESD-07-07102			20SEP07 PY EW

- ▲ TRUE POSITION TOLERANCE FOR P.C. BOARD LAYOUT IS 0.25 [.010] AT MAX MATERIAL CONDITION. SUGGESTED BOARD THICKNESS IS 2.39 [.094].
- ▲ MARK WITH 1.19 [.047]-1.57 [.062] HIGH CHARACTERS. FAR SIDE REFERS TO THE WIDE SIDE OF THE KEYSTONE. NEAR SIDE REFERS TO THE NARROW SIDE OF THE KEYSTONE. IF THE REAR SHELL IS TOO SMALL FOR "AMP", AMP PART NUMBER, AND DATE CODE, THEN SPLIT AS FOLLOWS:
 A. AMP PART NUMBER ON REAR SHELL, NEAR SIDE.
 B. "AMP" AND DATE CODE ON REAR SHELL, FAR SIDE.
- ▲ REGULAR LENGTH CONTACT LOCATION: 1, 8, 11, 19, AND 22.
- ▲ SHORT LENGTH CONTACT LOCATION: 2 THRU 7, 9, 10, 12 THRU 18, 20, 21, AND 23 THRU 25.
- ▲ FINISH: CADMIUM PER QQ-P-416
- ▲ FINISH: TIN PLATED PER MIL-T-10727
- ▲ GROUNDING INDENT APPLIES TO TIN PLATE SHELLS ONLY. AMP PART NUMBER 443631-2.



▲	443631-2
▲	443631-1
SHELL FINISH	PART NUMBER

THIS DRAWING IS A CONTROLLED DOCUMENT.		DESIGNED BY: P. BRANCERIO	DATE: 07/07/07	REVISED BY: TYS ELECTRONICS CORPORATION	DATE: 07/07/07	REVISED BY: TYS ELECTRONICS CORPORATION	DATE: 07/07/07
DESIGNED BY: P. BRANCERIO	DATE: 07/07/07	DESIGNED BY: P. BRANCERIO	DATE: 07/07/07	DESIGNED BY: P. BRANCERIO	DATE: 07/07/07	DESIGNED BY: P. BRANCERIO	DATE: 07/07/07
APPROVED BY: P. BRANCERIO	DATE: 07/07/07	APPROVED BY: P. BRANCERIO	DATE: 07/07/07	APPROVED BY: P. BRANCERIO	DATE: 07/07/07	APPROVED BY: P. BRANCERIO	DATE: 07/07/07
SEE CALLOUTS	SEE CALLOUTS	SEE CALLOUTS	SEE CALLOUTS	SEE CALLOUTS	SEE CALLOUTS	SEE CALLOUTS	SEE CALLOUTS
CUSTOMER DRAWING		A1 00779		C=443631		REVISED TO	
SIZE: 4.1		1		1		C	