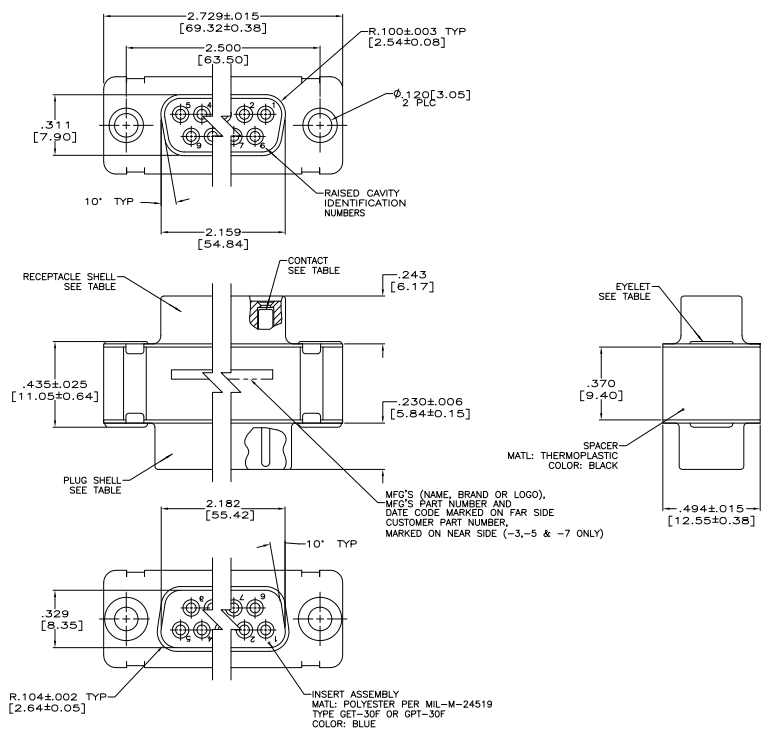
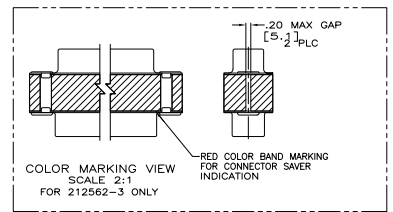


REV	DATE	DESCRIPTION	BY	CHK
N	5-16-06		CT	DM
P	8-21-08		PK	BW



- CONTACTS INCLUDED IN ASSEMBLY EXCEPT FOR 212562-7.
 △ MATL: STEEL, PER ASTM-A-109.
 △ FINISH: CADMIUM PER QQ-P-416.
 △ CONTACT
 BODY MATL: BERYLLIUM COPPER PER ASTM-B-197.
 BODY FINISH: PLATED GOLD, .000050 MIN THK PER MIL-G-45204 OVER NICKEL, .000050 MIN THK PER QQ-N-290.
 HOOD MATL: STAINLESS STEEL PER ASTM-A-167.
 HOOD FINISH: PASSIVATED PER ASTM-A-380
 △ FINISH: PLATED ZINC .00020 MIN THK PER ASTM-B-633. YELLOW CHROMATE FINISH.
 △ MATL: BRASS PER ASTM-B-36.
 △ FINISH: PLATED GOLD, .000050 MIN THK PER MIL-G-45204 OVER COPPER, .000100 MIN THK PER MIL-C-14550.
 △ CONTACT
 BODY MATL: BERYLLIUM COPPER PER ASTM-B-197.
 BODY AND HOOD FINISH: PLATED GOLD, .000050 MIN THK PER MIL-G-45204 OVER COPPER, .000100 MIN THK PER MIL-C-14550.
 HOOD MATL: BRASS PER ASTM-B-36



OBsolete	EYELET	SHELLS	CONTACT	CUSTOMER P/N	PART NO.
	△ △	△ △	△ △	PT2-111-4	212562-7
	△ △	△ △	△ △	4U884 SOCN R10002677-0104	212562-6
	△ △	△ △	△ △	PT2-111-10	212562-5
	△ △	△ △	△ △	-	212562-4
	△ △	△ △	△ △	(1J02-104)	212562-3
	△ △	△ △	△ △	-	212562-2
	△ △	△ △	△ △	-	212562-1

THIS DRAWING IS A CONTROLLED DOCUMENT. DATE: 11-07-04
 TTI ELECTRONICS CORPORATION
 HARRISBURG, PA 17105-3608
 CONNECTOR Saver, AMPLMITE 37 POSITION, SIZE 4, SERIES 109
 CUSTOMER DRAWING: 100779G=212562