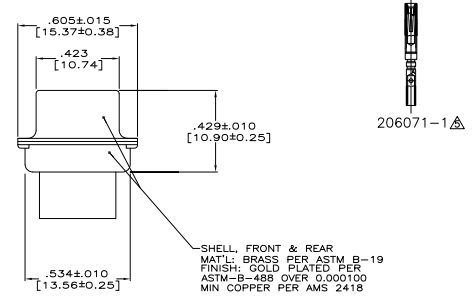
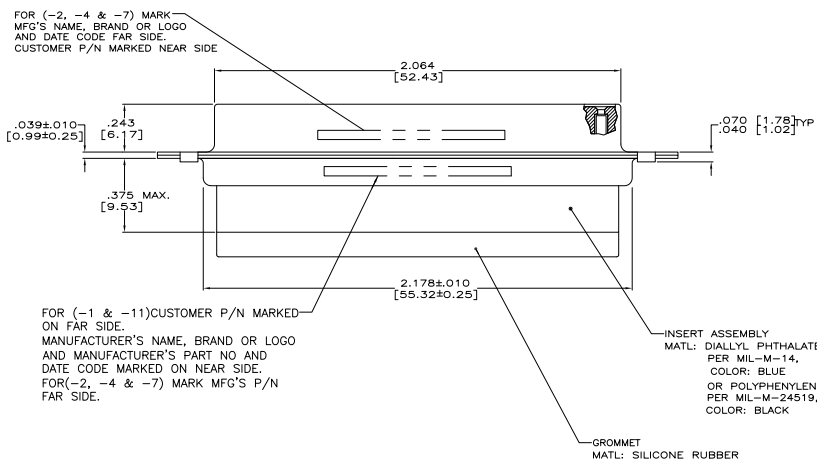


- CONNECTOR SUPPLIED WITHOUT CONTACTS; SHOWN FOR ILLUSTRATION ONLY.
- BE-CU RETENTION CLIPS ARE INCLUDED IN INSERT AND INSTALLED WITH TINES POINTING TOWARDS MATING FACE.
- OVERALL DIMENSIONS DO NOT INCLUDE RAISED CAVITY IDENTIFICATION.
- MARKING FAR SIDE REFERS TO WIDE SIDE OF KEYSTONE. NEAR SIDE REFERS TO NARROW SIDE OF KEYSTONE.
- CONTACTS SUPPLIED WITH 211671-7 ONLY.
- 100% INSPECTION REQUIRED PER BOEING 1801:
 - A. VISUAL
 - B. DWV
 - C. IR
- CUSTOMER REQUIRES SINGLE LOT DATE CODE.
- SPECIAL REQUIREMENTS:
 - A. TEST TWO CONNECTORS PER LOT FOR COMPLIANCE TO GROMMET PEEL STRENGTH REQUIREMENTS.
 - B. TEST ALL CIRCUIT CAVITIES FOR MISALIGNMENT OR EXCESSIVE ADHESIVE.



.120 [3.05]	1B01-029RHW	211671-1	1-211671-1
.120 [3.05]	B010648-0010	211671-7	211671-7
NOT RELEASED	-	211671-6	211671-6
NOT RELEASED	-	211671-5	211671-5
.120 [3.05]	-	211671-4	211671-4
NOT RELEASED	-	211671-3	211671-3
.120 [3.05]	2A085-023V-001	211671-2	211671-2
.120 [3.05]	1B01-029	211671-1	211671-1
DIA A	CUSTOMER P/N ON CONNECTOR	MFG'S P/N	MFG'S P/N

THIS DRAWING IS A CONTROLLED DOCUMENT. **IN A DRAWER**

DATE: 08/08/07

DESIGNED BY: RCP1 ASSY, AMPUMITE, 78 POSN, SIZE 5, SERIES 90, NON MAGNETIC WITH GROMMET

ISSUED BY: A1 00779 G=211671

CUSTOMER DRAWING