

4

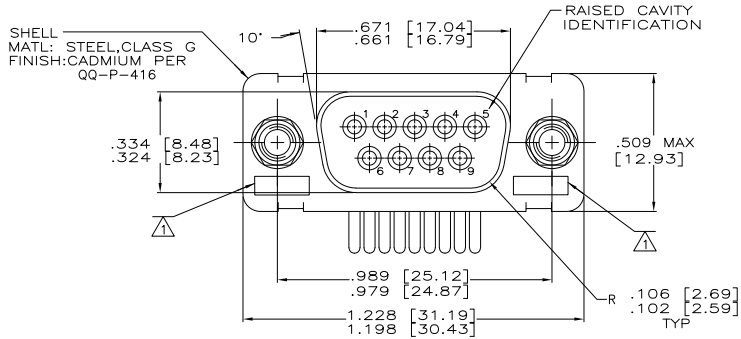
3

2

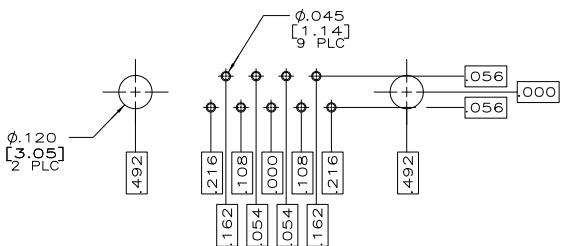
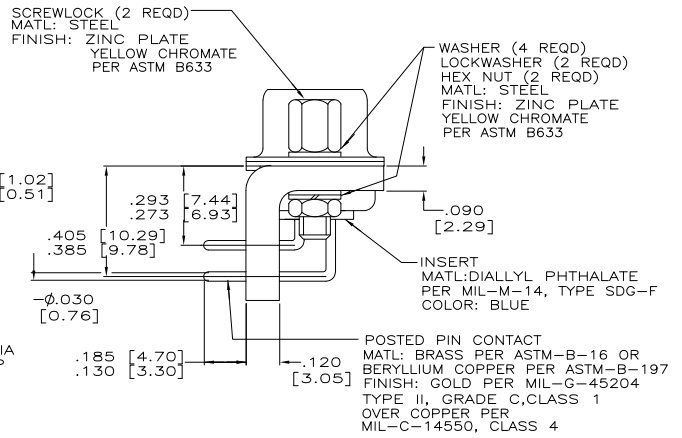
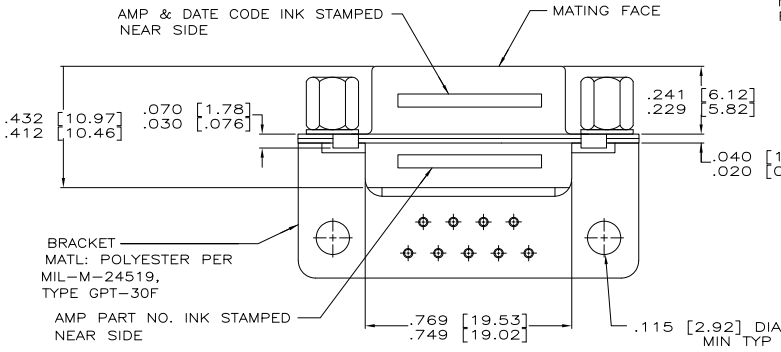
1

THIS DRAWING IS UNPUBLISHED. RELEASED FOR PUBLICATION.
 © COPYRIGHT BY TYCO ELECTRONICS CORPORATION. ALL RIGHTS RESERVED.

LOC	DIST	REVISIONS		DATE	BY	APP'D
DF	DO	F	L/R	DESCRIPTION		
		L		REV PER ECO-08-000831	26FEB08	PY DM



UL/CSA DESIGNATION STAMPED IN THIS AREA, OPTIONAL



AS SHOWN	208932-1
DESCRIPTION	PART NO.

THIS DRAWING IS A CONTROLLED DOCUMENT.		DATE: 12-31-91	Tyco Electronics Corporation Harrisburg, PA 17105-3608	
DIMENSIONS: INCHES		DRN: T. ALEXANDER	1-10-92	
TOLERANCES UNLESS OTHERWISE SPECIFIED:		CHK: EMADI	NAME: Tyco Electronics	
0 PLC ± .010		APPC: -	PRODUCT SPEC: -	
1 PLC ± .005		APPLICATION SPEC: -	SIZE: CASE CODE: DRAWING NO: A200779C-208932	
2 PLC ± .005 (0.13)		WEIGHT: -	RESTRICTED TO: -	
3 PLC ± .005		CUSTOMER DRAWING	SCALE: 4:1 SHEET: 1 of 1 REV: L	
MATERIAL: SEE CALLOUTS				
FINISH: SEE CALLOUTS				

AMP 1471-9 REV 31MM2000

208932

A