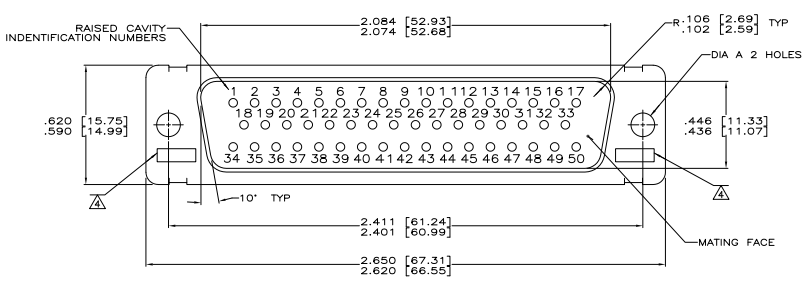
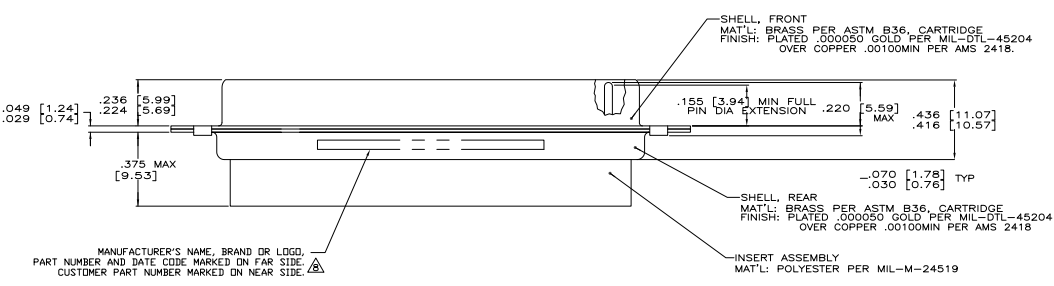


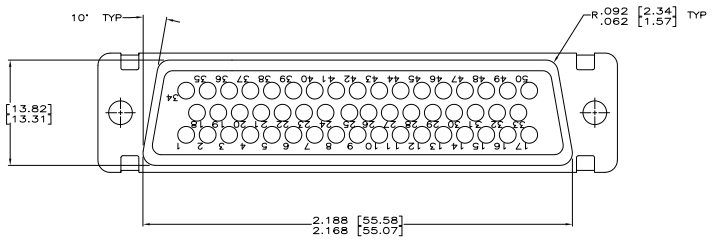
REV	DATE	DESCRIPTION	BY	APP
1	12-31-82	REV PER ECD 00-001200	J	RL



- THIS PLUG WILL MATE WITH ANY RECEPTACLE CONNECTOR WITH THE SAME INSERT ARRANGEMENT AS DEFINED BY MS18277-1.
- MAXIMUM WIRE INSULATION USED WITH THIS PLUG IS .072 (1.83) DIA.
- Be-Cu RETENTION CLIPS ARE INCLUDED IN INSERTS.
- UL/CSA DESIGNATION STAMPED IN THIS AREA, OPTIONAL.
- RESTRICTED TO CAE ELECTRONIC ONLY.
- THESE CONNECTORS ARE QUALIFIED TO GODDARD SPACE FLIGHT CENTER SPECIFICATION S-311-P-4.
- CONTACT NOT INCLUDED - SHOWN FOR DIMENSIONAL REFERENCE ONLY.
- FAR SIDE REFERS TO WIDE SIDE OF KEYSTONE.



MANUFACTURER'S NAME, BRAND OR LOGO,
 PART NUMBER AND DATE CODE MARKED ON FAR SIDE.
 CUSTOMER PART NUMBER MARKED ON NEAR SIDE.



1.20 [3.05]	1A01-031PHA	206804-5	206804-5
1.20 [3.05]	311P409-5P-B-12	206804-2	206804-4
1.54 [3.91]	N/A	206804-3	206804-3
1.20 [3.05]	311P409-5P-B-12	206804-2	206804-2
1.54 [3.91]	311P409-5P-B-15	206804-1	206804-1
REMARKS	DIA A	CUSTOMER P/N ON CONNECTOR	MFG P/N ON CONNECTOR MFG P/N

THIS DRAWING IS A CONTROLLED DOCUMENT		DATE	BY	APP
DATE	BY	DATE	BY	APP
12-31-82	J. GILMAN	12-31-82	J. GILMAN	RL
DRAWING TITLE		CUSTOMER DRAWING		
PROJECT FILE		MIL-C-24308		
DRAWING NO.		A100779		
REV		1		
DATE		12-31-82		
BY		J. GILMAN		
APP		RL		