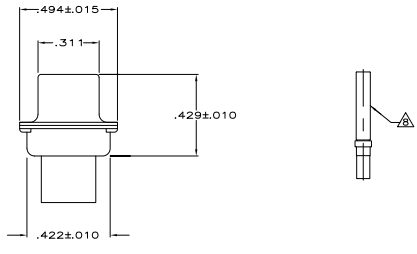
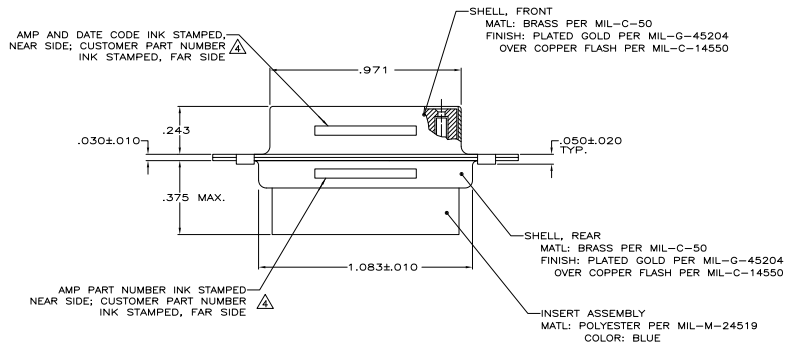


- THIS RECEPTACLE WILL MATE WITH ANY PLUG CONNECTOR WITH THE SAME INSERT ARRANGEMENT AS DEFINED BY MS18274-1.
 - MAXIMUM WIRE INSULATION USED WITH THIS RCPT. IS .072 DIA. MAX.
 - Be-Cu RETENTION CLIPS ARE INCLUDED IN INSERTS.
- ⚠ CUSTOMER PART NUMBER MAY BE SPLIT BETWEEN FRONT AND REAR SHELLS, SAME SIDE. FAR SIDE REFERS TO WIDE SIDE OF KEYSTONE, NEAR SIDE REFERS TO NARROW SIDE OF KEYSTONE.
 ⚠ UL/CSA DESIGNATION STAMPED IN THIS AREA.
 ⚠ THESE CONNECTORS ARE QUALIFIED TO GODDARD SPACE FLIGHT CENTER SPECIFICATION S-311-P-4.
 ⚠ RESTRICTED TO CAE ELECTRONICS ONLY.
 ⚠ CONNECTOR SUPPLIED WITH CONTACTS, AMP PART NUMBER 206793-1; (NOT INSTALLED).



⚠	.120	570513-2	206799-7	206799-7
⚠	.120	LMSC 1621480-002	206799-6	206799-6
⚠	.120	LMSC 1621480-002	206799-5	206799-5
⚠	.120	311P409-2S-B-12	206799-2	206799-4
	.154		206799-3	206799-3
⚠	.120	311P409-2S-B-12	206799-2	206799-2
⚠	.154	311P409-2S-B-15	206799-1	206799-1

REMARKS	DIA A	MARKED CUSTOMER P/N	MARKED AMP P/N	AMP P/N

THIS DRAWING IS A CONTROLLED DOCUMENT. DATE: 12-18-88

DRAWING NO. 100779
 REV. 1
 DATE: 12-18-88
 BY: [Signature]
 CHECKED: [Signature]
 APPROVED: [Signature]

TE Connectivity
 RECEPTACLE FOR SOCKET CONTACTS
 SIZE #2 (15 POS.) NON-MAGNETIC
 SIZE: A1 00779 (Q=206799)
 CUSTOMER DRAWING