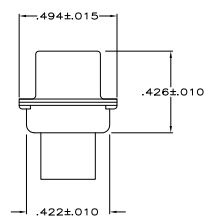
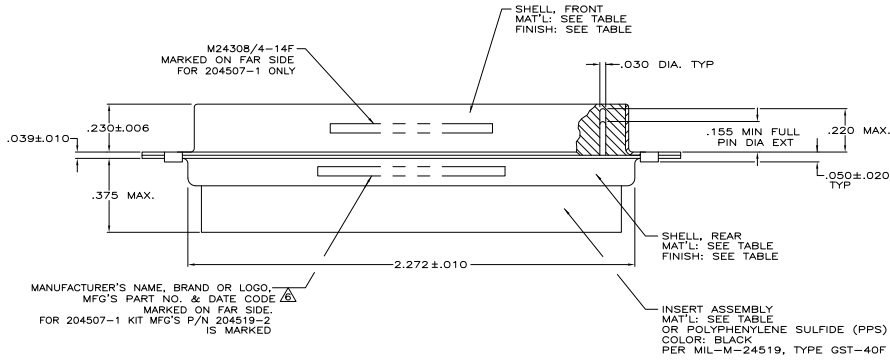


1. THIS PLUG IS DESIGNED TO CONFORM TO THE LATEST ISSUE OF MIL-C-24308.
 2. MAX WIRE INSUL. TO BE USED WITH THIS PLUG IS .054 DIA.
 3. METAL RETENTION CLIPS ARE INCLUDED IN INSERTS.
 4. PACKAGE STAMPED M 24308/4-267F.
 5. THIS PLUG WILL ACCEPT SIZE 22 PIN CONTACT M 39029/58-360 OR ANY TYCO HDD-22 PIN CONTACT
- ⚠ MFG'S PART NO. STAMPED ON CONNECTOR REPRESENTS KIT NUMBER WITH CONTACTS FOR 204507-1 ONLY.
 - ⚠ UL/CSA DESIGNATION STAMPED IN THIS AREA, OPTIONAL.
 - ⚠ P/N'S 204507-4, -5, & 5--4 HAVE GROUNDING INDENTS ON FRONT SHELL, NOT SHOWN ON DRAWING.
 - ⚠ FINISH: BRIGHT TIN PER ASTM-B-545 .000400--000550 THK OVER COPPER PER AMS2418, .000050 MIN THK.



MANUFACTURER'S NAME, BRAND OR LOGO, MFG'S PART NO. & DATE CODE MARKED ON FAR SIDE. FOR 204507-1 KIT MFG'S P/N 204519-2 IS MARKED

INSERT ASSEMBLY MAT'L: SEE TABLE OR POLYPHENYLENE SULFIDE (PPS) COLOR: BLACK PER MIL-M-24519, TYPE GST-40F

⚠	BRIGHT TIN PER ASTM-B-545	STEEL, CLASS G	GST-40F PER MIL-M-24519	5-204507-4
⚠		STEEL, CLASS G	GST-40F PER MIL-M-24519	204507-6
⚠		STEEL, CLASS G	GST-40F PER MIL-M-24519	204507-5
⚠	BRIGHT TIN PER ASTM-B-545	STEEL, CLASS G	GST-40F PER MIL-M-24519	204507-4
SUPSD BY 204507-1	CADMIUM PER QQ-P-416	STEEL, CLASS G	GST-40F PER MIL-M-24519	204507-3
SUPSD BY 206502-4	CADMIUM PER QQ-P-416	BRASS	GST-40F PER MIL-M-24519	204507-2
	CADMIUM PER QQ-P-416	STEEL, CLASS G	GST-40F PER MIL-M-24519	204507-1
	SHELL FINISH	SHELL MAT'L	INSERT MAT'L	PART NO.

THIS DRAWING IS A CONTROLLED DOCUMENT. **THE ELECTRONICS CORPORATION** Harrisburg, PA 17105-3608

INCHES: FRACTIONS: DECIMALS: MILLIMETERS: **THE ELECTRONICS CORPORATION**

UNLESS OTHERWISE SPECIFIED: **THE ELECTRONICS CORPORATION**

SEE TABLE: SEE CALLOUTS: CUSTOMER DRAWING: **THE ELECTRONICS CORPORATION**

AMPLITUDE PLUG FOR PIN CONTACTS HI-DENSITY D CONNECTION SIZE 4 (SEE PICON SERIES 90)

SIZE: 100779 Q=204507

DATE: 4-1 SHEET: 1 OF 1