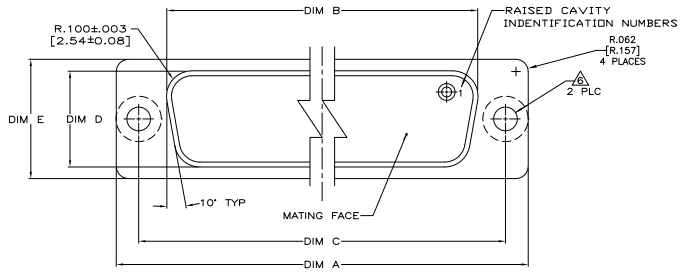
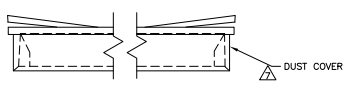
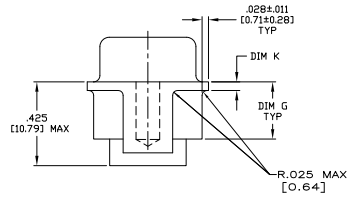
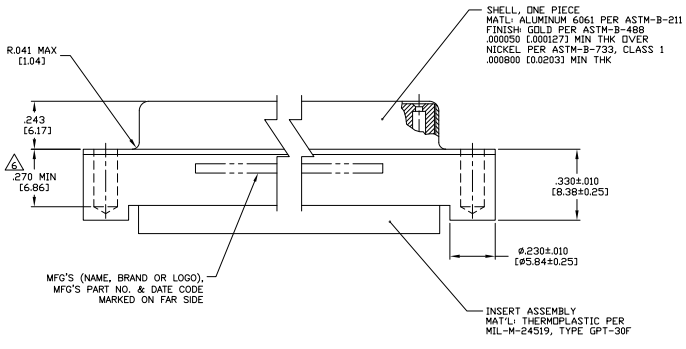


THIS DRAWING IS UNCLASSIFIED  
 UNLESS INDICATED OTHERWISE

REV	DATE	DESCRIPTION	BY	APP'D
D		REV PER ECO 09-014927		CT DM



- CONNECTOR(S) WILL BE TESTED IN ACCORDANCE WITH GROUP A INSPECTION OF NASA SPEC S-311-P-4. RESIDUAL MAGNETISM IS NOT REQUIRED.
  - THIS CONNECTOR ASSEMBLY MATES WITH ANY MIL-PRF-24308 PLUG CONNECTOR WITH SAME INSERT ARRANGEMENT.
  - MARKED WITH .047 [1.197]-062 [1.577] HIGH CHARACTERS. FAR SIDE REFERS TO THE WIDE SIDE OF THE KEYSTONE. NEAR SIDE REFERS TO THE NARROW SIDE OF THE KEYSTONE. IF THE SHELL IS TOO SMALL FOR ALL THE INFORMATION THEN MARKING MAY BE SPLIT BETWEEN NEAR AND FAR SIDE.
  - RETENTION SPRING MATERIAL: BERYLLIUM COPPER PER ASTM B 194.
  - THIS DRAWING SHALL BE INTERPRETED IN ACCORDANCE WITH APPLICABLE STANDARDS LISTED IN MIL-STD-100.
- △ .118-40UNC-2B HELICOIDAL INSERT PER NAS1130-04-15. NO PLATING IS REQUIRED PRIOR TO OR POST INSTALLATION OF THE HELICOIDAL INSERT.  
 △ A DUST COVER IS ASSEMBLED ON EACH CONNECTOR.



.044 [1.12]	.290 [7.37]	.610 [15.49]	.428 [10.87]	2.411 [61.24]	2.069 [52.55]	2.640 [67.06]	MS18277-1	50	5	1883054-5
.044 [1.12]	.290 [7.37]	.499 [12.67]	.316 [8.03]	2.505 [63.63]	2.164 [54.97]	2.734 [69.44]	MS18276-1	37	4	1883054-4
.044 [1.12]	.290 [7.37]	.489 [12.42]	.306 [7.77]	2.495 [63.37]	2.154 [54.71]	2.724 [69.20]	MS18275-1	25	3	1883054-3
.035 [0.89]	.290 [7.37]	.499 [12.67]	.316 [8.03]	1.857 [47.17]	1.516 [38.51]	2.093 [53.16]	MS18274-1	15	2	1883054-2
.035 [0.89]	.290 [7.37]	.489 [12.42]	.306 [7.77]	1.847 [46.91]	1.506 [38.25]	2.083 [52.91]	MS18273-1	9	1	1883054-1
K	G±.010 [±0.25]	E	D	C	B	A	INSERT ARRANGEMENT	NO OF POS	SHELL SIZE	MFG'S PART NUMBER

THIS DRAWING IS A CONTROLLED DOCUMENT.

DATE: 10-24-09

REVISIONS: 1

REVISION: 1

DESCRIPTION: AMPHILITE RECEPTACLE ASSEMBLY, SERIES 109, CRIMP, SIZES 1 THRU 5

SEE CALLOUT

CUSTOMER DRAWING: A100779G-1883054

DATE: 10-24-09

REV: 1

APP'D: DM