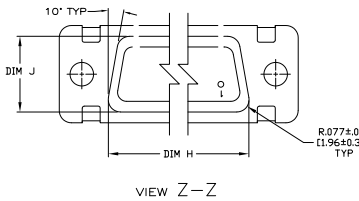
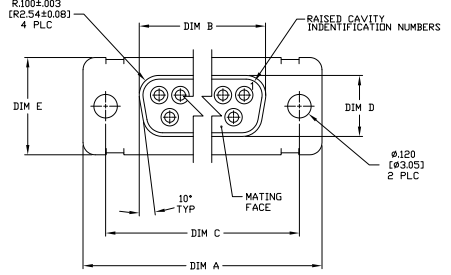
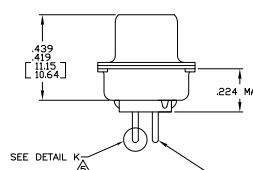
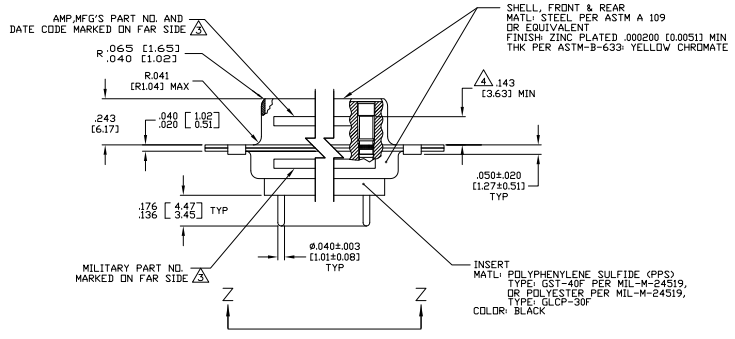


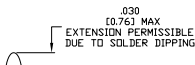
REV	DF	AO	DESCRIPTION	DATE	BY	APP
1	B		REV PER ECO-08-01981	200208	PK	BW



- 1. SEE SHEET 2 FOR RECOMMENDED P.C. BOARD LAYOUT. TRUE POSITION TOLERANCE FOR P.C. BOARD LAYOUT IS .010 (0.25) AT MAX MATERIAL CONDITION. SUGGESTED BOARD THICKNESS IS .062 (1.57).
- 2. THE CONNECTORS DESCRIBED IN THIS DOCUMENT MEET THE REQUIREMENTS OF MIL-C-24308 AND MATE WITH ANY PLUG CONNECTOR WITH SAME INSERT ARRANGEMENT.
- 3. MARKED WITH .047 (1.19)–.062 (1.57) HIGH CHARACTERS. FAR SIDE REFERS TO THE WIDE SIDE OF THE KEYSTONE. NEAR SIDE REFERS TO THE NARROW SIDE OF THE KEYSTONE. IF THE REAR SHELL IS TOO SMALL FOR THE ENTIRE MILITARY PART NUMBER, MARKING SHALL BE LOCATED AS FOLLOWS:
 - A. "M4308" ON FRONT SHELL, FAR SIDE.
 - B. SLASH SHEET AND DASH NUMBER ON REAR SHELL, FAR SIDE.
 - C. "AMP" AND DATE CODE ON FRONT SHELL, NEAR SIDE.
 - D. MFG'S PART NUMBER ON REAR SHELL, NEAR SIDE.
- 4. IF THE FRONT SHELL IS TOO SMALL FOR "AMP", MFG'S PART NUMBER AND DATE CODE, MARKING SHALL BE SPLIT AS FOLLOWS:
 - A. MFG'S PART NUMBER ON REAR SHELL, NEAR SIDE.
 - B. "AMP" AND DATE CODE ON FRONT SHELL, NEAR SIDE.
 - C. MILITARY PART NUMBER ON REAR SHELL, FAR SIDE.
- 5. POINT OF ELECTRICAL ENGAGEMENT – AS MEASURED WITH A .0390–.0393 (0.991–0.998) DIA SQUARE ENDED PIN.
- 6. SOLDER DIPPED PER J-STD-001 WITH Sn63 SOLDER PER J-STD-006 IN THE ENTIRE AREA OF DIMENSION SHOWN (1757832-6 THRU -10 ONLY.)
- 7. MEETS SOLDERABILITY PER MIL-STD-202 METHOD 208.
- 8. SPACERS (QTY = 2) ARE SUPPLIED WITH CONNECTOR, NOT ATTACHED.



CONTACT (QTY = NO. OF POSN)
 MATL BRASS PER ASTM-B-16, OR BERYLLIUM COPPER PER ASTM-B-194
 FINISH GOLD PER ASTM-B-488, TYPE II, GRADE C, CLASS I27 IN CONTACT MATING AREA, .000010 (0.0003) MIN THK GOLD PER ASTM-B-488 OVER .000050 (0.0013) MIN THK NICKEL PER SAE-AMS-00-N-290 ON CONTACT BODY



DETAIL K
 SCALE 10:1
 FOR 1757832-6 THRU -10 ONLY

DIM J	DIM H	DIM E	DIM D	DIM C	DIM B	DIM A	NO OF POSN	INSERT ARRANGEMENT	SHELL SIZE	MILITARY P/N ON CONNECTOR	MFG'S P/N ON CONNECTOR	PART NO.
.544 [13.82]	2.188 [55.58]	.620 [15.75]	.428 [10.87]	2.411 [61.24]	2.069 [52.55]	2.650 [67.31]	MS18277-1	50	5	M24308/23-17	1757832-5	1-1757832-0
.524 [13.31]	2.168 [55.07]	.590 [14.99]	.418 [10.69]	2.401 [60.99]	2.059 [52.30]	2.620 [66.55]	MS18276-1	37	4	M24308/23-16	1757832-4	1757832-9
.432 [10.97]	2.282 [57.96]	.509 [12.93]	.316 [8.03]	2.505 [63.63]	2.164 [54.97]	2.744 [69.70]	MS18275-1	25	3	M24308/23-15	1757832-3	1757832-8
.412 [10.46]	1.635 [41.53]	.509 [12.93]	.316 [8.03]	1.857 [47.17]	1.516 [38.51]	2.103 [53.42]	MS18274-1	15	2	M24308/23-14	1757832-2	1757832-7
.432 [10.97]	1.635 [41.53]	.509 [12.93]	.316 [8.03]	1.847 [46.91]	1.506 [38.25]	2.073 [52.65]	MS18273-1	9	1	M24308/23-13	1757832-1	1757832-6
.412 [10.46]	1.073 [27.25]	.479 [12.17]	.306 [7.77]	1.307 [33.20]	.966 [24.54]	1.526 [38.76]	MS18272-1	50	5	M24308/23-17	1757832-5	1757832-5
.412 [10.46]	1.073 [27.25]	.479 [12.17]	.306 [7.77]	1.307 [33.20]	.966 [24.54]	1.526 [38.76]	MS18271-1	25	3	M24308/23-15	1757832-3	1757832-3
.412 [10.46]	1.073 [27.25]	.479 [12.17]	.306 [7.77]	1.307 [33.20]	.966 [24.54]	1.526 [38.76]	MS18270-1	15	2	M24308/23-14	1757832-2	1757832-2
.412 [10.46]	1.073 [27.25]	.479 [12.17]	.306 [7.77]	1.307 [33.20]	.966 [24.54]	1.526 [38.76]	MS18270-1	9	1	M24308/23-13	1757832-1	1757832-1

THIS DRAWING IS A CONTROLLED DOCUMENT.

REVISIONS: 1. DIMENSIONAL CHANGES PER MIL-STD-883C

DATE: 10/10/01

BY: [Signature]

APPROVED: [Signature]

RECEIPTABLE ASSEMBLY, AMPLIMITE, POSTED SERIES 109, SIZE 1 THRU 5

DATE: 10/10/01

BY: [Signature]

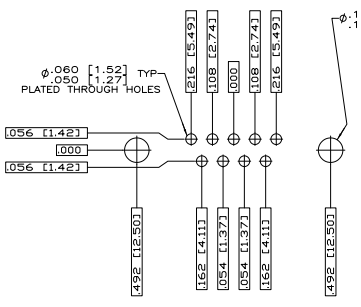
APPROVED: [Signature]

CUSTOMER DRAWING: 1757832

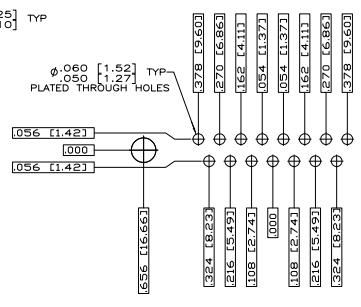
REV: 4.1

PK: 2

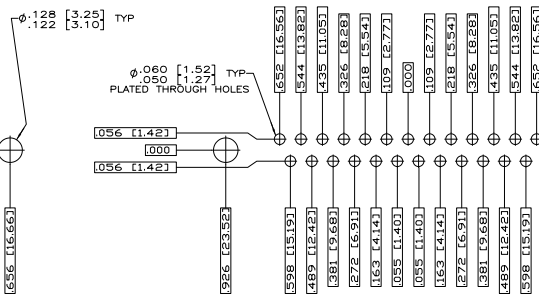
BW



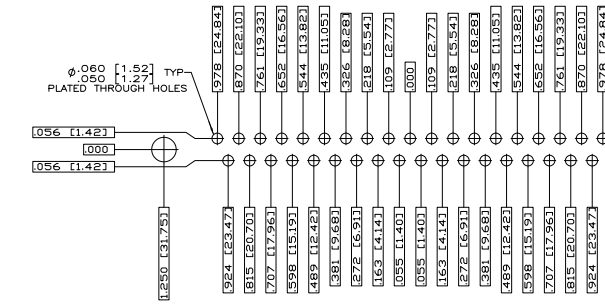
RECOMMENDED P.C. BOARD LAYOUT
 SHELL SIZE 1 (9 POSITION) Δ



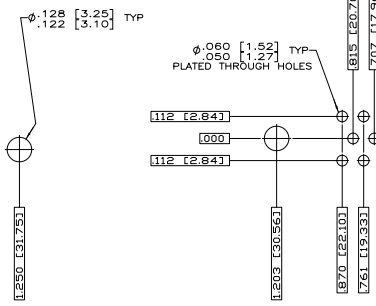
RECOMMENDED P.C. BOARD LAYOUT
 SHELL SIZE 2 (15 POSITION) Δ



RECOMMENDED P.C. BOARD LAYOUT
 SHELL SIZE 3 (25 POSITION) Δ



RECOMMENDED P.C. BOARD LAYOUT
 SHELL SIZE 4 (37 POSITION) Δ



RECOMMENDED P.C. BOARD LAYOUT
 SHELL SIZE 5 (50 POSITION) Δ

THIS DRAWING IS A CONTROLLED DOCUMENT.		J. P. THOMAS 2-22-58 G. HOETMAN 2-22-58 J. MILLER 2-22-58 R. B. BROWN 2-22-58 A. T. 2-22-58		Tys Electronics Tys Electronics Corporation Harrisburg, PA 17105-3608	
DIMENSIONS: UNLESS OTHERWISE SPECIFIED, DIMENSIONS ARE IN INCHES AND DECIMALS THEREOF.	FINISH: UNLESS OTHERWISE SPECIFIED, ALL SURFACES ARE TO BE FINISHED TO THE STANDARD SPECIFICATION FOR THE MATERIAL.	PART NAME: RECEPTACLE ASSEMBLY, AMP/LMITE POSTED, SERIES 109, SIZE 1 THRU 5	PART NUMBER: 100 USE ONE (DRAWING NO.) A 100779 G-1757832	QUANTITY: 41	REMARKS: 2 2 R
SEE CALLOUTS		SEE CALLOUTS		CUSTOMER DRAWING	