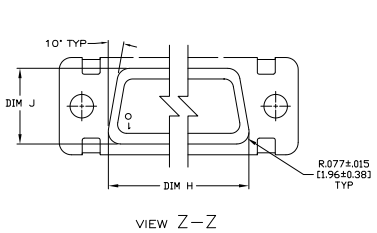
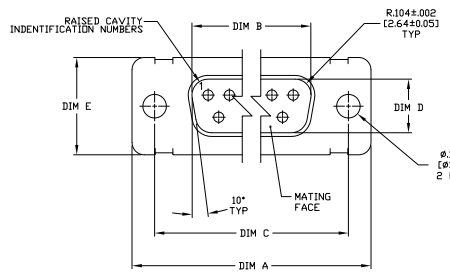
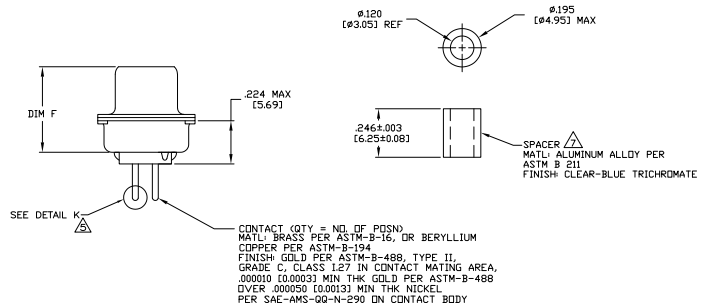
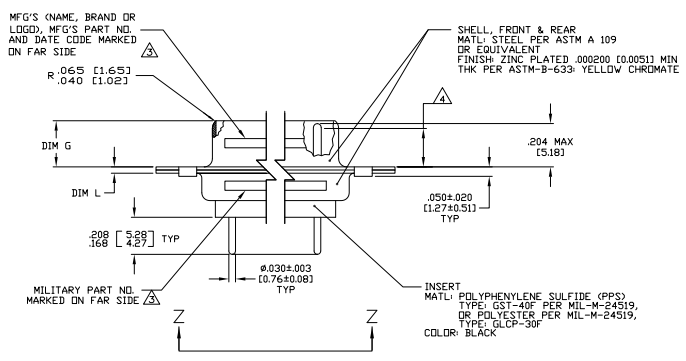


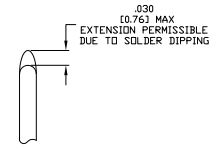
REV	DESCRIPTION	DATE	BY	APP
A	REV PER ECO-08-04119	28FEB08	PY	RL
B	REV PER ECO-08-019792	21AUG08	PK	BW



- 1. SEE SHEET 2 FOR RECOMMENDED P.C. BOARD LAYOUT. TRUE POSITION TOLERANCE FOR P.C. BOARD LAYOUT IS .010 (0.25) AT MAX MATERIAL CONDITION. SUGGESTED BOARD THICKNESS IS .062 (1.57). THE CONNECTORS DESCRIBED IN THIS DOCUMENT MEET THE REQUIREMENTS OF MIL-C-24308 AND MATE WITH ANY PLUG CONNECTOR WITH SAME INSERT ARRANGEMENT.
- 2. MARKED WITH .047 (1.19)-.062 (1.57) HIGH CHARACTERS. FAR SIDE REFERS TO THE WIDE SIDE OF THE KEYSTONE. NEAR SIDE REFERS TO THE NARROW SIDE OF THE KEYSTONE. IF THE SHELL IS TOO SMALL FOR THE ENTIRE MARKING MARKING SHALL BE SPLIT AS FOLLOWS:
 - A. *M24308* ON FRONT SHELL, FAR SIDE.
 - B. SLASH SHEET AND DASH NUMBER ON REAR SHELL, FAR SIDE.
 - C. *MFG'S* (NAME, BRAND OR LOGO) AND DATE CODE ON FRONT SHELL, NEAR SIDE.
 - D. MFG'S PART NUMBER ON REAR SHELL, NEAR SIDE.
- 3. REQUIREMENT FOR FULL PIN DIAMETER EXTENSION: .159 (4.04 MIN FOR SHELL SIZE 1 THRU 2); .150 (3.81) MIN FOR SHELL SIZE 3, 4 & 5.
- 4. SOLDER DIPPED PER J-STD-001 WITH Sn63 SOLDER PER J-STD-006 IN THE ENTIRE AREA OF DIMENSION SHOWN (1757829-6 THRU -10 ONLY).
- 5. MEETS SOLDERABILITY PER MIL-STD-202 METHOD 208.
- 6. SPACERS (QTY = 2) ARE SUPPLIED WITH CONNECTOR; NOT ATTACHED.



DIMENSIONS												REV		SHELL		MILITARY P/N		MFG'S P/N		PART NUMBER		
												NO	OF	SIZE	IN	CONNECTOR	IN	CONNECTOR	IN	CONNECTOR	IN	CONNECTOR
.049 (1.24)	.544 (13.82)	2.188 (55.56)	2.36 (59.9)	.436 (11.07)	.620 (15.75)	.446 (11.33)	2.411 (61.24)	2.084 (52.93)	2.650 (67.31)	MS18277-1	50	5	M24308/24-11	1757829-5	1-1757829-0							
.029 (0.74)	.524 (13.30)	2.168 (55.07)	2.34 (59.4)	.416 (10.57)	.590 (14.99)	.436 (11.07)	2.401 (60.99)	2.074 (52.68)	2.620 (66.50)	MS18276-1	37	4	M24308/24-10	1757829-4	1757829-3							
.049 (1.24)	.432 (10.97)	2.282 (57.96)	2.36 (59.9)	.436 (11.07)	.509 (12.93)	.334 (8.48)	2.505 (63.63)	2.187 (55.55)	2.744 (69.70)	MS18276-1	37	4	M24308/24-10	1757829-4	1757829-4							
.029 (0.74)	.412 (10.46)	2.262 (57.49)	2.34 (59.4)	.416 (10.57)	.479 (12.17)	.324 (8.23)	2.495 (62.87)	2.177 (55.30)	2.714 (68.94)	MS18275-1	25	3	M24308/24-9	1757829-3	1757829-3							
.049 (1.24)	.432 (10.97)	1.635 (41.53)	2.36 (59.9)	.436 (11.07)	.509 (12.93)	.334 (8.48)	1.857 (47.17)	1.539 (39.09)	2.103 (53.45)	MS18274-1	15	2	M24308/24-8	1757829-2	1757829-2							
.029 (0.74)	.412 (10.46)	1.615 (41.02)	2.34 (59.4)	.416 (10.57)	.479 (12.17)	.324 (8.23)	1.847 (46.91)	1.529 (38.94)	2.073 (52.65)	MS18274-1	15	2	M24308/24-8	1757829-2	1757829-7							
.040 (1.02)	.432 (10.97)	1.093 (27.76)	2.38 (60.5)	.436 (10.97)	.509 (12.93)	.334 (8.48)	1.317 (33.45)	.999 (25.37)	1.556 (39.55)	MS18274-1	15	2	M24308/24-8	1757829-2	1757829-2							
.020 (0.51)	.412 (10.46)	1.073 (27.29)	2.39 (60.6)	.416 (10.46)	.479 (12.17)	.324 (8.23)	1.307 (33.20)	.989 (25.12)	1.526 (38.76)	MS18273-1	9	1	M24308/24-7	1757829-1	1757829-1							
.040 (1.02)	.432 (10.97)	1.093 (27.76)	2.38 (60.5)	.436 (10.97)	.509 (12.93)	.334 (8.48)	1.317 (33.45)	.999 (25.37)	1.556 (39.55)	MS18273-1	9	1	M24308/24-7	1757829-1	1757829-1							
.020 (0.51)	.412 (10.46)	1.073 (27.29)	2.39 (60.6)	.416 (10.46)	.479 (12.17)	.324 (8.23)	1.307 (33.20)	.989 (25.12)	1.526 (38.76)	MS18273-1	9	1	M24308/24-7	1757829-1	1757829-1							



DETAIL K
 SCALE 10:1
 FOR 1757829-6 THRU -10 ONLY

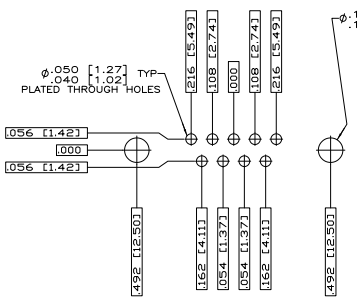
THIS DRAWING IS A CONTROLLED DOCUMENT.

DESIGNED BY	DATE	REVISED BY	DATE
DRAWN BY	DATE	APPROVED BY	DATE
CHECKED BY	DATE	DATE	DATE

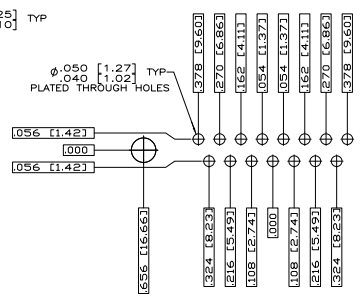
PLUG ASSEMBLY AMPULMITE POSTED SERIES 109, SIZE 1 THRU 5

TITLE: 100779(C)-1757829

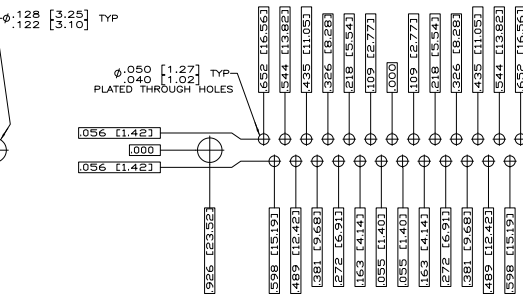
CUSTOMER DRAWING: 4.1 1 2 B



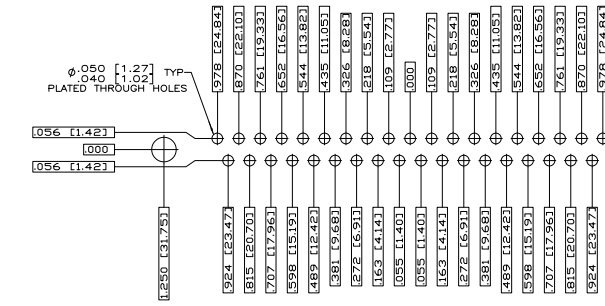
RECOMMENDED P.C. BOARD LAYOUT
 SHELL SIZE 1 (9 POSITION) ▲



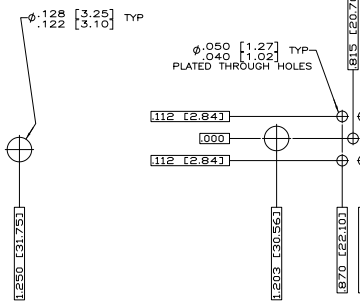
RECOMMENDED P.C. BOARD LAYOUT
 SHELL SIZE 2 (15 POSITION) ▲



RECOMMENDED P.C. BOARD LAYOUT
 SHELL SIZE 3 (25 POSITION) ▲



RECOMMENDED P.C. BOARD LAYOUT
 SHELL SIZE 4 (37 POSITION) ▲



RECOMMENDED P.C. BOARD LAYOUT
 SHELL SIZE 5 (50 POSITION) ▲

THIS DRAWING IS A CONTROLLED DOCUMENT.		DATE: 2-27-74	REV: 2
DRAWING: PLUG ASSEMBLY AMPLITE		DESIGNED BY: J. THOMAS	DATE: 2-28-74
REVISED BY: J. MILLER		DATE: 2-28-74	REV: 1
CHECKED BY: J. MILLER		DATE: 2-28-74	REV: 1
APPROVED BY: J. MILLER		DATE: 2-28-74	REV: 1
CUSTOMER DRAWING: A100779G-1757829		REV: 4.1	REV: 2