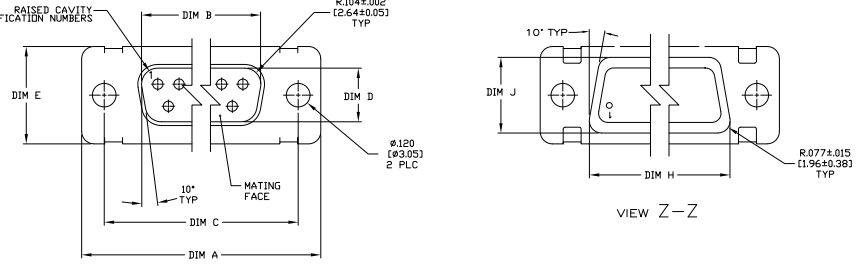
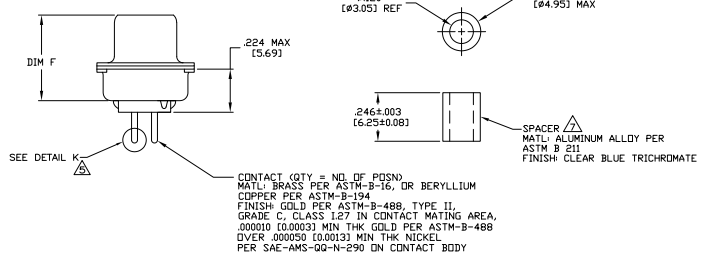
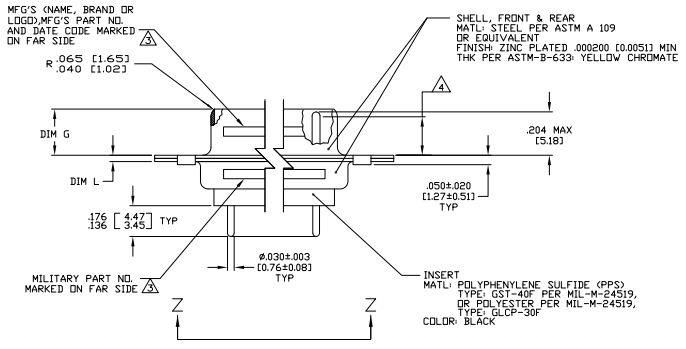


THIS DRAWING IS UNCLASSIFIED  
 UNLESS INDICATED OTHERWISE  
 REVISIONS: ALL RIGHTS RESERVED

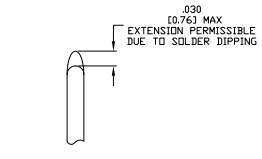
REV	DATE	DESCRIPTION	BY	CHK
A	REV PER EC2-08-004199		28F008	PY RL
B	REV PER EC2-08-018792		21A006	PK BW



- △ SEE SHEET 2 FOR RECOMMENDED P.C. BOARD LAYOUT. TRUE POSITION TOLERANCE FOR P.C. BOARD LAYOUT IS .010 (0.25) AT MAX MATERIAL CONDITION. SUGGESTED BOARD THICKNESS IS .062 (1.57)
- 2. THE CONNECTORS DESCRIBED IN THIS DOCUMENT MEET THE REQUIREMENTS OF MIL-C-24308 AND MATE WITH ANY PLUG CONNECTOR WITH SAME INSERT ARRANGEMENT.
- △ MARKED WITH .047 [1.19]-.062 [1.57] HIGH CHARACTERS. FAR SIDE REFERS TO THE WIDE SIDE OF THE KEYSTONE. NEAR SIDE REFERS TO THE NARROW SIDE OF THE KEYSTONE. IF THE SHELL IS TOO SMALL FOR ENTIRE MARKING MARKING SHALL BE SPLIT AS FOLLOWS:
  - A. "M24308" ON FRONT SHELL, FAR SIDE.
  - B. SLASH SHEET AND DASH NUMBER ON REAR SHELL, FAR SIDE.
  - C. "MFG'S NAME, BRAND OR LOGO AND DATE CODE ON FRONT SHELL, NEAR SIDE.
  - D. MFG'S PART NUMBER ON REAR SHELL, NEAR SIDE.
- △ REQUIREMENT FOR FULL PIN DIAMETER EXTENSION:
  - .159 (4.04 MIN FOR SHELL SIZE 1 THRU 2); .150 (3.81) MIN FOR SHELL SIZE 3, 4 & 5.
- △ SOLDER DIPPED PER J-STD-001 WITH Sn63 SOLDER PER J-STD-006 IN THE ENTIRE AREA OF DIMENSION SHOWN. (1757827-6 THRU -10 ONLY.)
- 6. MEETS SOLDERABILITY PER MIL-STD-202 METHOD 208.
- △ SPACERS (QTY = 2) ARE SUPPLIED WITH CONNECTOR; NOT ATTACHED.



QTY	L	J	H	G	F	E	D	C	B	A	MS18277-1	50	5	M24308/24-5	1757827-5	1-1757827-0			
.049	1.24	.544	1.382	2.188	35.58	236	5.99	436	11.07	620	14.75	446	11.33	2411	61.24	2084	52.93	2.650	67.31
.029	[0.74]	.524	[13.31]	2.168	35.07	224	5.69	416	[10.57]	590	[14.99]	436	11.07	2401	60.99	2074	52.68	2.620	66.59
.049	1.24	.492	1.097	2.282	37.96	236	5.99	436	11.07	509	12.93	334	8.48	2505	63.63	2187	55.55	2.744	69.76
.029	[0.74]	.412	[10.46]	2.262	37.45	224	5.69	416	[10.57]	479	[12.17]	324	8.23	2495	63.37	2177	55.30	2.714	68.94
.049	1.24	.432	1.097	1.635	41.53	236	5.99	436	11.07	509	12.93	334	8.48	1857	47.17	1339	39.09	2.103	53.45
.029	[0.74]	.412	[10.46]	1.615	41.02	224	5.69	416	[10.57]	479	[12.17]	324	8.23	1847	46.91	1329	38.84	2.073	52.65
.040	1.02	.432	1.097	1.053	27.76	238	6.05	436	10.97	509	12.93	334	8.48	1317	33.45	999	29.27	1.556	39.55
.020	[0.51]	.412	[10.46]	1.073	27.25	229	5.82	416	[10.46]	479	[12.17]	324	8.23	1307	33.20	989	29.12	1.526	38.76
.040	1.02	.432	1.097	1.053	27.53	238	6.05	436	10.97	509	12.93	334	8.48	989	29.12	671	17.04	1.228	31.19
.020	[0.51]	.412	[10.46]	1.073	27.02	229	5.82	416	[10.46]	479	[12.17]	324	8.23	979	28.87	661	16.79	1.198	30.43
.049	1.24	.544	1.382	2.188	35.58	236	5.99	436	11.07	620	14.75	446	11.33	2411	61.24	2084	52.93	2.650	67.31
.029	[0.74]	.524	[13.31]	2.168	35.07	224	5.69	416	[10.57]	590	[14.99]	436	11.07	2401	60.99	2074	52.68	2.620	66.59
.049	1.24	.492	1.097	2.282	37.96	236	5.99	436	11.07	509	12.93	334	8.48	2505	63.63	2187	55.55	2.744	69.76
.029	[0.74]	.412	[10.46]	2.262	37.45	224	5.69	416	[10.57]	479	[12.17]	324	8.23	2495	63.37	2177	55.30	2.714	68.94
.049	1.24	.432	1.097	1.635	41.53	236	5.99	436	11.07	509	12.93	334	8.48	1857	47.17	1339	39.09	2.103	53.45
.029	[0.74]	.412	[10.46]	1.615	41.02	224	5.69	416	[10.57]	479	[12.17]	324	8.23	1847	46.91	1329	38.84	2.073	52.65
.040	1.02	.432	1.097	1.053	27.76	238	6.05	436	10.97	509	12.93	334	8.48	1317	33.45	999	29.27	1.556	39.55
.020	[0.51]	.412	[10.46]	1.073	27.25	229	5.82	416	[10.46]	479	[12.17]	324	8.23	1307	33.20	989	29.12	1.526	38.76
.040	1.02	.432	1.097	1.053	27.53	238	6.05	436	10.97	509	12.93	334	8.48	989	29.12	671	17.04	1.228	31.19
.020	[0.51]	.412	[10.46]	1.073	27.02	229	5.82	416	[10.46]	479	[12.17]	324	8.23	979	28.87	661	16.79	1.198	30.43



DETAIL K  
 SCALE 10:1  
 FOR 1757827-6 THRU -10 ONLY

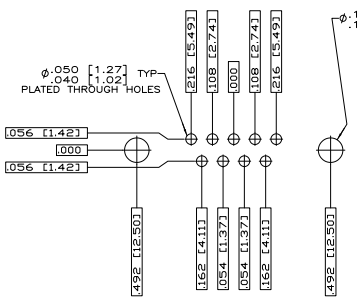
THIS DRAWING IS A CONTROLLED DOCUMENT

DATE: 3-28-08  
 BY: J. MILLER  
 CHECKED: 3-28-08  
 APPROVED: [Signature]

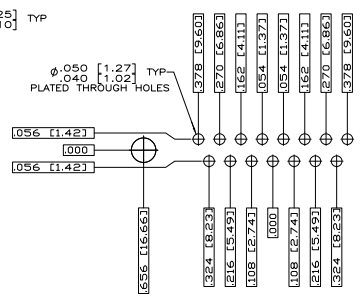
REVISIONS:

REV	DATE	DESCRIPTION
A	00779	G=1757827

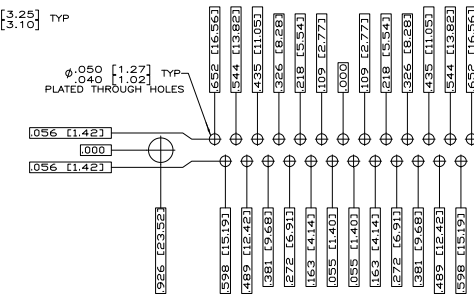
CUSTOMER DRAWING



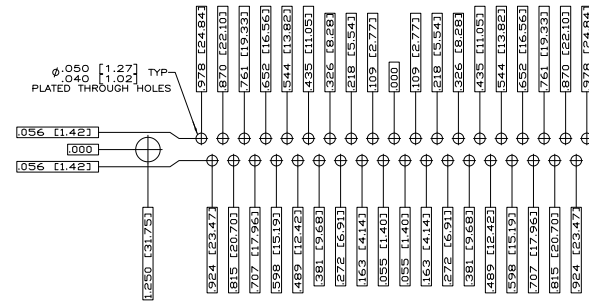
RECOMMENDED P.C. BOARD LAYOUT  
 SHELL SIZE 1 (9 POSITION) ▲



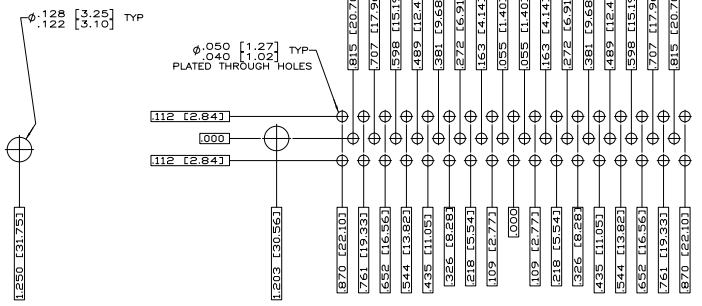
RECOMMENDED P.C. BOARD LAYOUT  
 SHELL SIZE 2 (15 POSITION) ▲



RECOMMENDED P.C. BOARD LAYOUT  
 SHELL SIZE 3 (25 POSITION) ▲



RECOMMENDED P.C. BOARD LAYOUT  
 SHELL SIZE 4 (37 POSITION) ▲



RECOMMENDED P.C. BOARD LAYOUT  
 SHELL SIZE 5 (50 POSITION) ▲

THIS DRAWING IS A CONTROLLED DOCUMENT.		DR. P. THOMAS	2-27-74	TYS Electronics Corporation Harrisburg, PA 17105-3608
DESIGNER	APPROVED	J. MILLER	2-28-74	
WORKS	INSPECTED	J. MILLER	2-28-74	PLUG ASSEMBLY, AMPLIMITE SERIES 109, SIZE 1 THRU 5
DATE	BY	J. MILLER	2-28-74	
REVISIONS	SEE CALLOUTS	REV. 1	DATE	REV. 2
CUSTOMER DRAWING		A1	00779	G-1757827