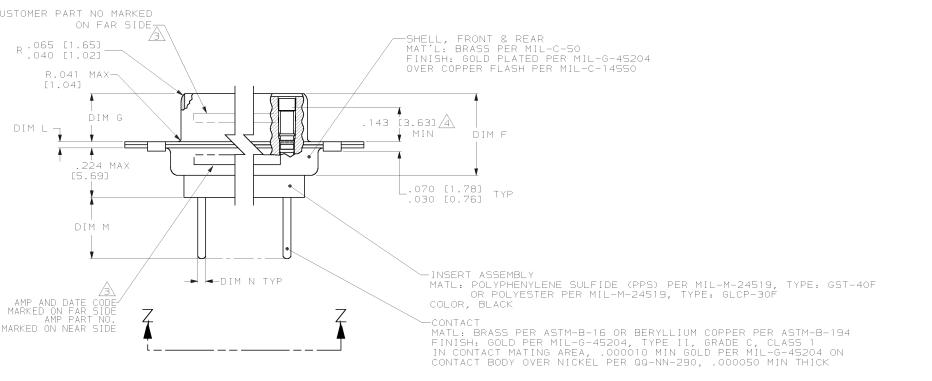
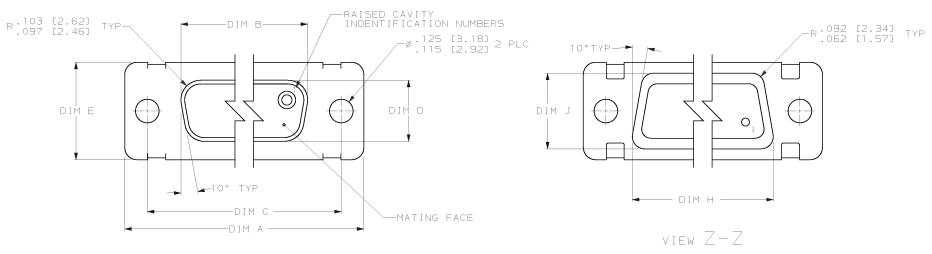


REV		DESCRIPTION		DATE	BY	CHK
DF	DO	1	REV PER 0630-0163-03	3-03	CT	DM

- △ SEE SHEET 2 FOR RECOMMENDED P.C. BOARD LAYOUT. TRUE POSITION TOLERANCE FOR P.C. BOARD LAYOUT IS .010 (0.25) AT MAX MATERIAL CONDITION. SUGGESTED BOARD THICKNESS IS .125 (3.18)
- 2. THE CONNECTORS DESCRIBED IN THIS DOCUMENT MEET THE REQUIREMENTS OF MIL-C-24308 AND MATE WITH ANY PLUG CONNECTOR WITH SAME INSERT ARRANGEMENT.
- △ MARKED WITH .047 [1.193]-.062 [1.571] HIGH CHARACTERS. FAR SIDE REFERS TO THE WIDE SIDE OF THE KEYSTONE. NEAR SIDE REFERS TO THE NARROW SIDE OF THE KEYSTONE. IF THE FRONT SHELL IS TOO SMALL FOR ENTIRE CUSTOMER PART NO. MARKING WILL BE LOCATED AS FOLLOWS:
 - A. AMP PART NUMBER ON REAR SHELL, NEAR SIDE.
 - B. "AMP" AND DATE CODE ON FRONT SHELL, NEAR SIDE.
 - C. I074504 ON FRONT SHELL, FAR SIDE
 - D. DASH NUMBER ON REAR SHELL, FAR SIDE
- △ POINT OF ELECTRICAL ENGAGEMENT - AS MEASURED WITH A .0390 [0.991]-.0393 [0.998] DIA SQUARE ENDED TEST PIN.
- 5. DIMENSIONS AND TOLERANCES PER ANSI Y14.5M-1982.
- 6. THIS DRAWING SHALL BE INTERPRETED IN ACCORDANCE WITH APPLICABLE STANDARDS LISTED IN MIL-STD-100.



1074504-509	.033 [0.84]	.332 [8.43]	.040 [1.02]	.544 [13.82]	2.188 [55.58]	.248 [6.30]	.439 [11.15]	.620 [15.75]	.428 [10.87]	2.411 [61.24]	2.069 [52.55]	2.650 [67.31]	MS18277-1	50	5	1663357-5	1663357-5
1074504-507	.033 [0.84]	.332 [8.43]	.040 [1.02]	.432 [10.97]	2.282 [57.96]	.248 [6.30]	.439 [11.15]	.509 [12.93]	.316 [8.03]	2.505 [63.63]	2.164 [54.97]	2.744 [69.70]	MS18276-1	37	4	1663357-4	1663357-4
1074504-505	.037 [0.94]	.332 [8.43]	.040 [1.02]	.432 [10.97]	1.635 [41.53]	.248 [6.30]	.439 [11.15]	.509 [12.93]	.316 [8.03]	1.897 [47.91]	1.516 [38.51]	2.103 [53.42]	MS18275-1	25	3	1663357-3	1663357-3
1074504-501	.033 [0.84]	.332 [8.43]	.040 [1.02]	.432 [10.97]	1.093 [27.76]	.248 [6.30]	.439 [11.15]	.509 [12.93]	.316 [8.03]	1.317 [33.45]	.978 [24.78]	1.506 [38.25]	MS18274-1	15	2	1663357-2	1663357-2

CUSTOMER PART NUMBER	N	M	L	J	H	G	F	E	D	C	B	A	INSERT ARRANGEMENT	NO OF PINS	SHELL SIZE	AMP P/N ON CONNECTOR	PART NUMBER
1074504-509	.033 [0.84]	.332 [8.43]	.040 [1.02]	.544 [13.82]	2.188 [55.58]	.248 [6.30]	.439 [11.15]	.620 [15.75]	.428 [10.87]	2.411 [61.24]	2.069 [52.55]	2.650 [67.31]	MS18277-1	50	5	1663357-5	1663357-5
1074504-507	.033 [0.84]	.332 [8.43]	.040 [1.02]	.432 [10.97]	2.282 [57.96]	.248 [6.30]	.439 [11.15]	.509 [12.93]	.316 [8.03]	2.505 [63.63]	2.164 [54.97]	2.744 [69.70]	MS18276-1	37	4	1663357-4	1663357-4
1074504-505	.037 [0.94]	.332 [8.43]	.040 [1.02]	.432 [10.97]	1.635 [41.53]	.248 [6.30]	.439 [11.15]	.509 [12.93]	.316 [8.03]	1.897 [47.91]	1.516 [38.51]	2.103 [53.42]	MS18275-1	25	3	1663357-3	1663357-3
1074504-501	.033 [0.84]	.332 [8.43]	.040 [1.02]	.432 [10.97]	1.093 [27.76]	.248 [6.30]	.439 [11.15]	.509 [12.93]	.316 [8.03]	1.317 [33.45]	.978 [24.78]	1.506 [38.25]	MS18274-1	15	2	1663357-2	1663357-2

THIS DRAWING IS A CONTROLLED DOCUMENT.

DESIGNED BY: C. S. THOMAS
 DRAWN BY: S. MILLER
 CHECKED BY: S. MILLER
 APPROVED BY: S. MILLER

DATE: 10/20/02

REV: 2

THIS DRAWING IS A CONTROLLED DOCUMENT.

DATE: 10/20/02

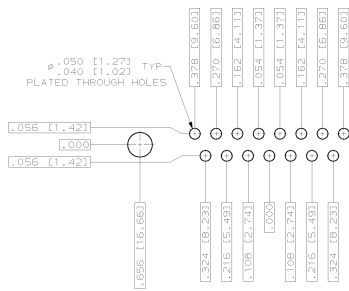
REV: 2

THIS DRAWING IS A CONTROLLED DOCUMENT.

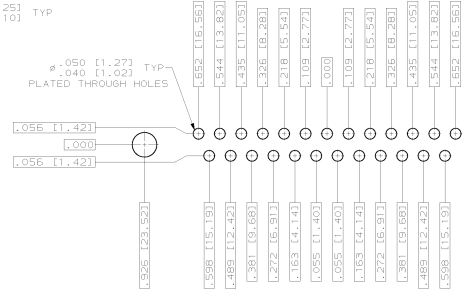
DATE: 10/20/02

REV: 2

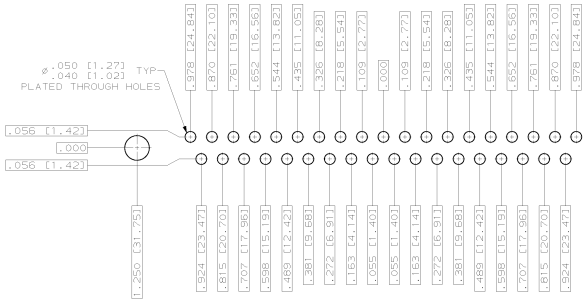
REV	BY	DATE	DESCRIPTION	APP'D	CHK'D	APP'D
DF	DO					
			SEE SHEET 1			



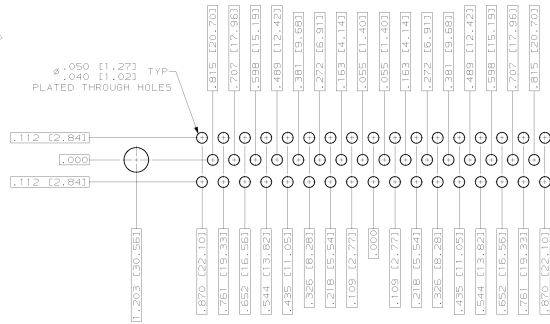
RECOMMENDED P.C. BOARD LAYOUT
SHELL SIZE 2 (15 POSITION) Δ



RECOMMENDED P.C. BOARD LAYOUT
SHELL SIZE 3 (25 POSITION) Δ



RECOMMENDED P.C. BOARD LAYOUT
SHELL SIZE 4 (37 POSITION) Δ



RECOMMENDED P.C. BOARD LAYOUT
SHELL SIZE 5 (50 POSITION) Δ

THIS DRAWING IS A CONTROLLED DOCUMENT. © 2013 Tyco Electronics

DESCRIPTION	REVISIONS	DATE
AMPLETIME RECEPTACLE ASSY, LOW PROFILE	1	08/23/13
SIZE 20 POSTED P.C. BOARD CONTACTS	1	
.030 DIA LONG POST, SERIES 109, GOLD	1	
PLATED BRASS SHELL SIZES 2 THRU 5	1	

1663357

A1 007728 1663357

CUSTOMER DRAWING