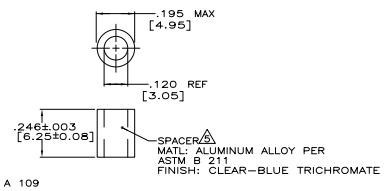
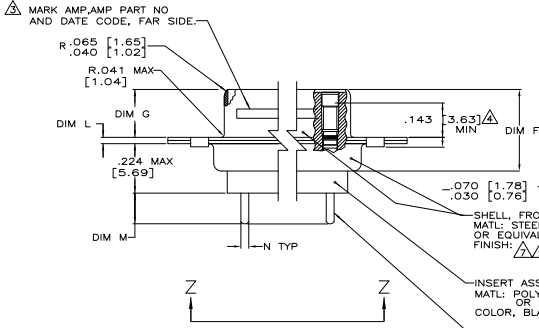
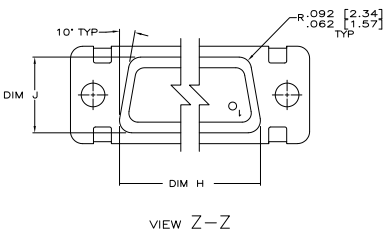
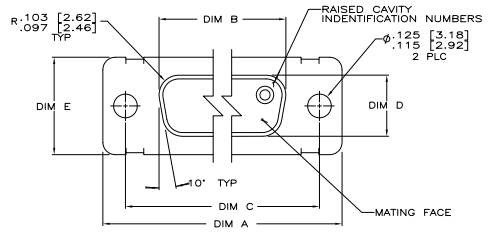


THIS DRAWING IS UNPUBLISHED
 ALL RIGHTS RESERVED

REV	DATE	DESCRIPTION	BY	CHK	APP
DF					
C		REV PER ECU 08-04192			



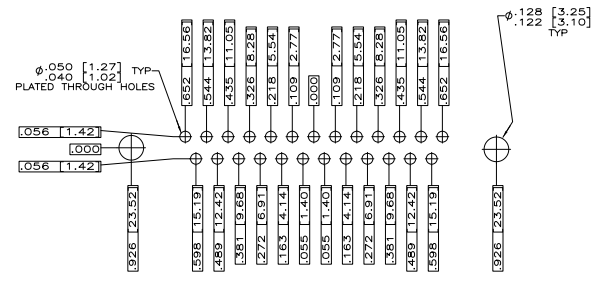
- △ TRUE POSITION TOLERANCE FOR P.C. BOARD LAYOUT IS .010 [0.25] AT MAX MATERIAL CONDITION. SUGGESTED BOARD THICKNESS IS .125 [3.18]
- △ THE CONNECTORS DESCRIBED IN THIS DOCUMENT WILL MATE WITH ANY PLUG CONNECTOR WITH THE SAME INSERT ARRANGEMENT
- △ MARKED WITH .047 [1.19]-.062 [1.57] HIGH CHARACTERS. FAR SIDE REFERS TO THE WIDE SIDE OF THE KEYSTONE. NEAR SIDE REFERS TO THE NARROW SIDE OF THE KEYSTONE.
- △ POINT OF ELECTRICAL ENGAGEMENT - AS MEASURED WITH A .0390 [0.991]-.0393 [0.998] DIA SQUARE ENDED TEST PIN.
- △ SPACERS (QTY 2) ARE SUPPLIED WITH CONNECTORS (NOT ATTACHED TO THE CONNECTOR).
- △ CAVITY NO. 3, 8 AND 16 ARE NOT LOADED WITH CONTACTS.
- △ FINISH: CADMIUM PER QQ-416.
- △ FINISH: ZINC PLATED PER ASTM-B-633 .000200-.000400 THK WITH SUPPLEMENTARY CHROMATE (Cr3+).

MARK AMP, AMP PART NO AND DATE CODE, FAR SIDE.

SHELL FRONT & REAR
 MATL: STEEL PER ASTM A 109 OR EQUIVALENT
 FINISH: △

INSERT ASSEMBLY
 MATL: POLYPHENYLENE SULFIDE (PPS) PER MIL-M-24519, TYPE: GST-40F
 OR POLYESTER PER MIL-M-24519, TYPE: GLCP-30F
 COLOR, BLACK

CONTACT
 MATL: BRASS PER ASTM-B-16 OR BERYLLIUM COPPER PER ASTM-B-194
 FINISH: GOLD PER MIL-G-45204, TYPE II, GRADE C, GLASS 1
 IN CONTACT MATING AREA, .00010 MIN GOLD PER MIL-G-45204 ON CONTACT BODY OVER NICKEL PER QQ--N-290, .000050 MIN THICK



RECOMMENDED P.C. BOARD LAYOUT
 SHELL SIZE 3 (25 POSITION) △

N	M	L	J	H	G	F	E	D	C	B	A	NO OF POS	SHELL SIZE	AMP P/N ON CONNECTOR	PART NUMBER
.033 [0.84]	.176 [4.47]	.040 [1.02]	.432 [10.97]	1.635 [41.53]	.248 [6.30]	.439 [11.15]	.509 [12.93]	.316 [8.03]	1.857 [47.17]	1.516 [38.51]	2.103 [53.42]	25	3	5-1484322-3	5-1484322-3
.027 [0.69]	.136 [3.45]	.020 [0.51]	.412 [10.46]	1.615 [41.02]	.238 [6.05]	.419 [10.64]	.479 [12.17]	.306 [7.77]	1.847 [46.91]	1.506 [38.25]	2.073 [52.65]			1484322-3	1484322-3
.033 [0.84]	.176 [4.47]	.040 [1.02]	.432 [10.97]	1.635 [41.53]	.248 [6.30]	.439 [11.15]	.509 [12.93]	.316 [8.03]	1.857 [47.17]	1.516 [38.51]	2.103 [53.42]				
.027 [0.69]	.136 [3.45]	.020 [0.51]	.412 [10.46]	1.615 [41.02]	.238 [6.05]	.419 [10.64]	.479 [12.17]	.306 [7.77]	1.847 [46.91]	1.506 [38.25]	2.073 [52.65]				

THIS DRAWING IS A CONTROLLED DOCUMENT. **REV 1** 1/12/21

DESIGNED BY: **ADAM BAKER** 1/12/21
 CHECKED BY: **ADAM BAKER** 1/12/21
 DRAWN BY: **ADAM BAKER** 1/12/21

AMPLITE RECEPTACLE ASSY, LOW PROFILE
 SELECTIVE LOADED CONTACTS,
 SERIES 109, SIZE 3

SIZE: **A1** 00779 G=1484322
 CUSTOMER DRAWING

DATE: 21
 SHEET: 1 OF 1
 REV: C