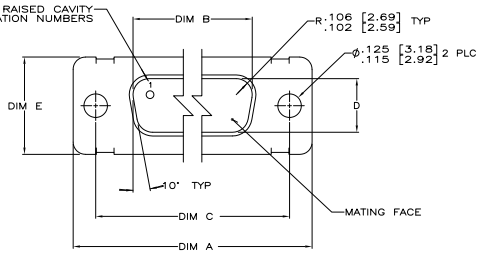


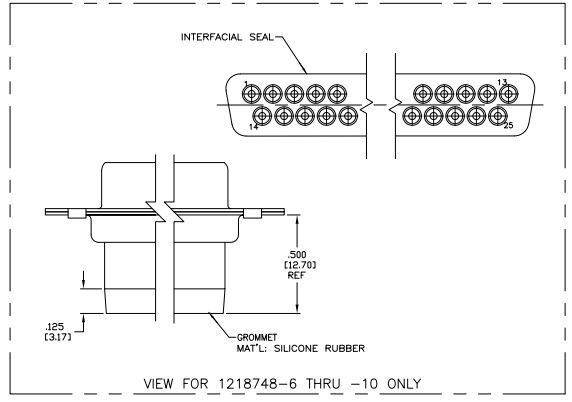
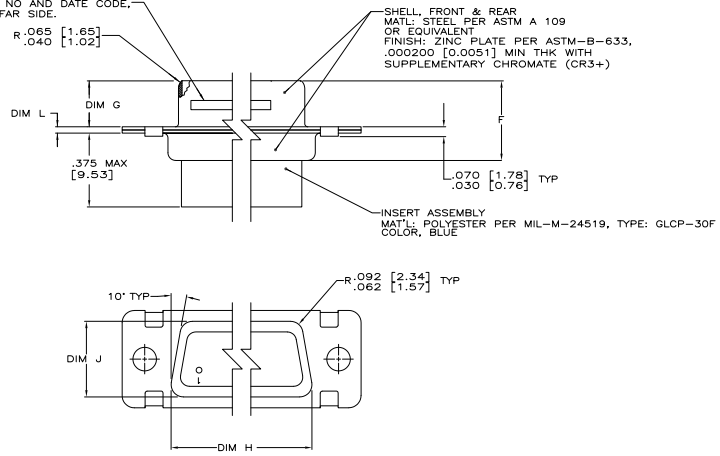
THIS DRAWING IS UNAPPROVED FOR PRODUCTION
 © 2008 AMP ELECTRONICS CORPORATION ALL RIGHTS RESERVED

REV	DATE	DESCRIPTION	BY	CHK	APP
E	REV PER ECO-06-004816		OTM006	PY	DM
F	REV PER ECO-06-018752		214008	PK	BW



1. THE CONNECTORS DESCRIBED IN THIS DOCUMENT MATE WITH ANY RECEPTACLE CONNECTOR WITH THE SAME INSERT ARRANGEMENT.
- MARKED WITH .047 [1.19]-.062 [1.57] HIGH CHARACTERS. FAR SIDE REFERS TO THE WIDE SIDE OF THE KEYSTONE. NEAR SIDE REFERS TO THE NARROW SIDE OF THE KEYSTONE. IF THE FRONT SHELL IS TOO SMALL FOR "MFG'S" (NAME, BRAND OR LOGO), MFG'S PART NUMBER AND DATE CODE, THEN SPLIT AS FOLLOWS:
 A. "MFG'S" PART NUMBER ON REAR SHELL, FAR SIDE.
 B. "MFG'S" (NAME, BRAND OR LOGO) AND DATE CODE ON FRONT SHELL, FAR SIDE.

MARK MFG'S (NAME, BRAND OR LOGO), MFG'S PART NO AND DATE CODE, FAR SIDE.



PRELIMINARY NOT RELEASED FOR PRODUCTION	WITH GROMMET & INTERFACIAL SEAL	.049 [1.24]	.544 [13.82]	2.188 [55.58]	.238 [6.05]	.436 [11.07]	.820 [20.93]	.446 [11.33]	2.411 [61.24]	2.084 [52.93]	2.650 [67.31]	MS18277-1	50	5	1-1218748-0	
PRELIMINARY NOT RELEASED FOR PRODUCTION	WITH GROMMET & INTERFACIAL SEAL	.049 [1.24]	.432 [10.97]	2.282 [57.96]	.238 [6.05]	.436 [11.07]	.509 [12.93]	.334 [8.48]	2.505 [63.63]	2.187 [55.55]	2.744 [69.70]	MS18276-1	37	4	1218748-9	
PRELIMINARY NOT RELEASED FOR PRODUCTION	WITH GROMMET & INTERFACIAL SEAL	.049 [1.24]	.432 [10.97]	1.635 [41.53]	.238 [6.05]	.436 [11.07]	.509 [12.93]	.334 [8.48]	1.857 [47.17]	1.539 [39.09]	2.103 [53.42]	MS18275-1	25	3	1218748-8	
PRELIMINARY NOT RELEASED FOR PRODUCTION	WITH GROMMET & INTERFACIAL SEAL	.040 [1.02]	.412 [10.46]	1.615 [41.02]	.229 [5.82]	.412 [10.46]	.479 [12.17]	.324 [8.23]	1.847 [46.91]	1.529 [38.84]	2.073 [52.65]	MS18274-1	15	2	1218748-7	
PRELIMINARY NOT RELEASED FOR PRODUCTION	WITH GROMMET & INTERFACIAL SEAL	.040 [1.02]	.412 [10.46]	1.073 [27.25]	.229 [5.82]	.412 [10.46]	.479 [12.17]	.324 [8.23]	1.307 [33.20]	.989 [25.12]	1.526 [38.76]	MS18273-1	9	1	1218748-6	
PRELIMINARY NOT RELEASED FOR PRODUCTION	WITH GROMMET & INTERFACIAL SEAL	.040 [1.02]	.412 [10.46]	1.073 [27.25]	.229 [5.82]	.412 [10.46]	.479 [12.17]	.324 [8.23]	.979 [24.87]	.661 [16.79]	1.198 [30.43]	MS18272-1	9	1	1218748-5	
PRELIMINARY NOT RELEASED FOR PRODUCTION	WITH GROMMET & INTERFACIAL SEAL	.049 [1.24]	.432 [10.97]	2.282 [57.96]	.238 [6.05]	.436 [11.07]	.509 [12.93]	.334 [8.48]	2.505 [63.63]	2.187 [55.55]	2.744 [69.70]	MS18276-1	37	4	1218748-4	
PRELIMINARY NOT RELEASED FOR PRODUCTION	WITH GROMMET & INTERFACIAL SEAL	.049 [1.24]	.432 [10.97]	1.635 [41.53]	.238 [6.05]	.436 [11.07]	.509 [12.93]	.334 [8.48]	1.857 [47.17]	1.539 [39.09]	2.103 [53.42]	MS18275-1	25	3	1218748-3	
PRELIMINARY NOT RELEASED FOR PRODUCTION	WITH GROMMET & INTERFACIAL SEAL	.040 [1.02]	.412 [10.46]	1.615 [41.02]	.229 [5.82]	.412 [10.46]	.479 [12.17]	.324 [8.23]	1.847 [46.91]	1.529 [38.84]	2.073 [52.65]	MS18274-1	15	2	1218748-2	
PRELIMINARY NOT RELEASED FOR PRODUCTION	WITH GROMMET & INTERFACIAL SEAL	.040 [1.02]	.412 [10.46]	1.073 [27.25]	.229 [5.82]	.412 [10.46]	.479 [12.17]	.324 [8.23]	1.307 [33.20]	.989 [25.12]	1.526 [38.76]	MS18273-1	9	1	1218748-1	
REMARKS		L	J	H	G	F	E	D	C	B	A	INSERT ARRANGEMENT	NO OF POS		SHELL SIZE	PART NUMBER

THIS DRAWING IS A CONTROLLED DOCUMENT. DATE: 11-18-08

DESIGNED BY: [Signature] DATE: 11-18-08

APPROVED BY: [Signature] DATE: 11-18-08

REVISED BY: [Signature] DATE: 11-18-08

DATE: 11-18-08

SIZE: 20, 22, 24, 26, 28, 30, 32, 34, 36, 38, 40, 42, 44, 46, 48, 50, 52, 54, 56, 58, 60, 62, 64, 66, 68, 70, 72, 74, 76, 78, 80, 82, 84, 86, 88, 90, 92, 94, 96, 98, 100

CUSTOMER DRAWING: A100779G-1218748