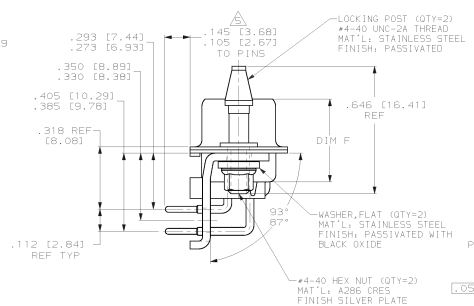
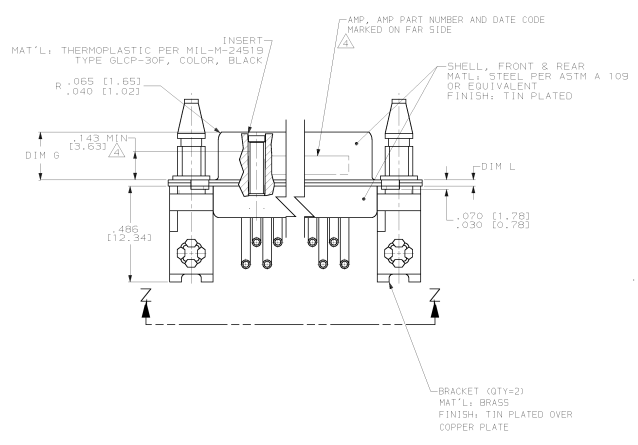
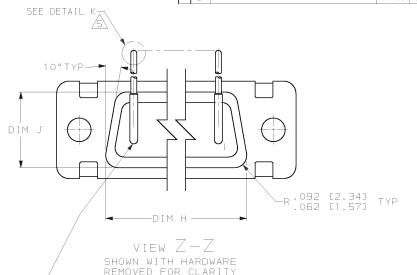
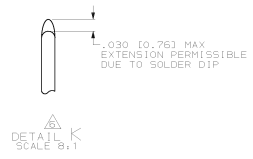
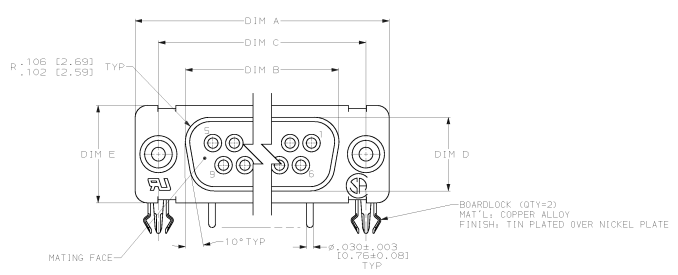


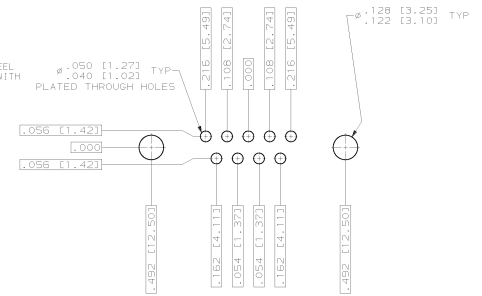
REV	DESCRIPTION	DATE	BY	CHK
1	INITIAL DESIGN			
2	REVISED FOR P.C. BOARD			
3	REVISED FOR P.C. BOARD			

REV	DESCRIPTION	DATE	BY	CHK
1	INITIAL DESIGN			
2	REVISED FOR P.C. BOARD			
3	REVISED FOR P.C. BOARD			



CONTACT (0TY = NO. OF POS)
 MAT'L: BRASS PER ASTM-B-16, OR BERYLLIUM
 COPPER PER ASTM-B-194
 FINISH: GOLD PER MIL-G-45204, TYPE II,
 GRADE C, CLASS I IN CONTACT MATING AREA,
 .00010 (0.003) MIN THK. GOLD PER MIL-G-45204
 OVER .00050 (0.0013) MIN THK NICKEL
 PER 00-N-290 ON CONTACT BODY

SHELL SIZE 1
 CONTACT CONFIGURATION
 BOARDLOCK NOT SHOWN
 FOR CLARITY



- TRUE POSITION TOLERANCE FOR P.C. BOARD LAYOUT IS .010 (0.25) AT MAX MATERIAL CONDITION. SUGGESTED BOARD THICKNESS IS .077±.005 (1.96±0.13)
- THE CONNECTOR DESCRIBED IN THIS DOCUMENT WILL MATE WITH ANY RECEPTACLE CONNECTOR WITH THE SAME INSERT ARRANGEMENT.
- MARKED WITH .047 (1.19)±.062 (1.57) HIGH CHARACTERS. FAR SIDE REFERS TO THE WIDE SIDE OF THE KEYSTONE. NEAR SIDE REFERS TO THE NARROW SIDE OF THE KEYSTONE. IF THE FRONT SHELL IS TOO SMALL FOR "AMP", AMP PART NUMBER AND DATE CODE, THEN SPLIT SHALL BE AS FOLLOWS:
 - A. AMP PART NUMBER ON REAR SHELL, NEAR SIDE.
 - B. "AMP" AND DATE CODE ON FRONT SHELL, NEAR SIDE.

- POINT OF ELECTRICAL ENGAGEMENT - AS MEASURED WITH A .0390 (0.991)±.0393 (0.998) DIA SQUARE ENDED TEST PIN.
- SIGNAL CONTACTS ARE SOLDER DIPPED WITH SnPb 63/37 TO MEET THE REQUIREMENTS OF MIL-STD-202, METHOD 208.

.040 [1.02] [.020] [0.51]	.432 [10.97] [.412] [10.46]	.769 [19.52] [.749] [19.02]	.248 [6.30] [.238] [6.05]	.439 [11.15] [.419] [10.64]	.509 [12.92] [.479] [12.17]	.916 [23.32] [.886] [22.57]	.989 [25.12] [.979] [24.87]	.648 [16.46] [.638] [16.21]	1.228 [31.19] [1.198] [30.43]	MS18273-1	9	1	1218607-6
DIM L	DIM J	DIM H	DIM G	DIM F	DIM E	DIM D	DIM C	DIM B	DIM A	INSERT ARRANGEMENT	NO. OF POS	SHELL SIZE	AMP PART NO.

THIS DRAWING IS A CONTROLLED DOCUMENT.

REVISED: 11/80
 INCHES: 10/10
 UNIT: INCHES
 DATE: 11/80
 BY: [Signature]
 CHECKED: [Signature]
 APPROVED: [Signature]

AMPI Incorporated
 Harrisburg, PA 17105-3608

RCPT. ASSY. AMPLIMITE
 RIGHT ANGLE, SERIES 103,
 WITH ONE-PIECE INSERT

REV: ONE ONE (DRAWING NO)
 A | 00778 | 1218607

SEE CALLOUTS
 SEE CALLOUTS
 CUSTOMER DRAWING