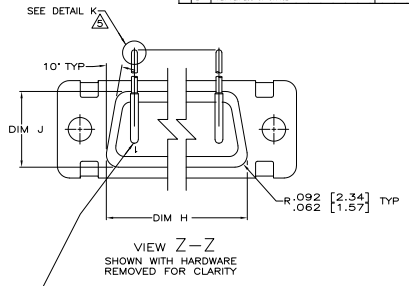
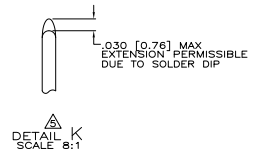
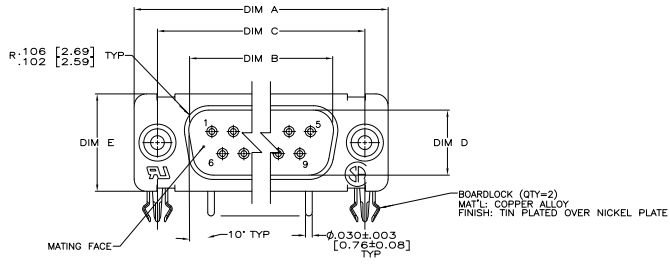
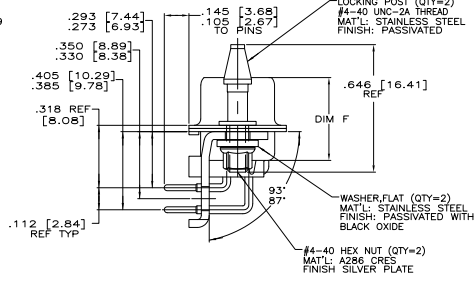
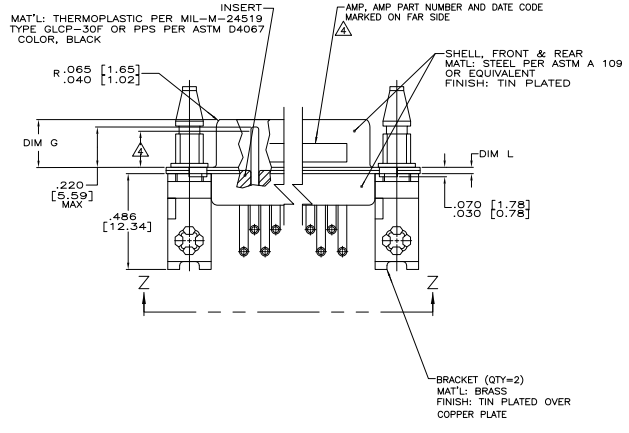


THIS DRAWING IS UNPUBLISHED
 ALL RIGHTS RESERVED
 © 2008 BY TYS ELECTRONICS CORPORATION

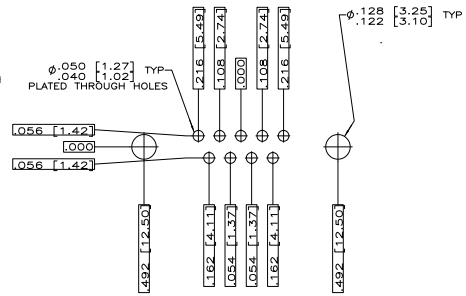
REV	DATE	DESCRIPTION	BY	APP
D	REV PER ECU-07-07102		21SEP07	PY BW



CONTACT (QTY = NO. OF POSN)
 MAT'L: BRASS PER ASTM-B-16, OR BERYLLIUM
 COPPER PER ASTM-B-194
 FINISH: GOLD PER MIL-G-45204, TYPE II,
 GRADE C, CLASS I IN CONTACT MATING AREA,
 .00010 [0.0003] MIN THK GOLD PER MIL-G-45204
 OVER .00050 [0.0013] MIN THK NICKEL
 PER QQ-N-290 ON CONTACT BODY



SHELL SIZE 1
 CONTACT CONFIGURATION
 BOARDLOCK NOT SHOWN
 FOR CLARITY



RECOMMENDED P.C. BOARD LAYOUT
 SHELL SIZE 1 (9 POSITION)

- 1. TRUE POSITION TOLERANCE FOR P.C. BOARD LAYOUT IS .010 [0.25] AT MAX MATERIAL CONDITION. SUGGESTED BOARD THICKNESS IS .0774±0.005 [1.96±0.13]
- 2. THE CONNECTOR DESCRIBED IN THIS DOCUMENT WILL MATE WITH ANY RECEPTACLE CONNECTOR WITH THE SAME INSERT ARRANGEMENT.
- 3. MARKED WITH .047 [1.19]-.062 [1.57] HIGH CHARACTERS. FAR SIDE REFERS TO THE WIDE SIDE OF THE KEYSTONE. NEAR SIDE REFERS TO THE NARROW SIDE OF THE KEYSTONE. IF THE FRONT SHELL IS TOO SMALL FOR "AMP", AMP PART NUMBER AND DATE CODE, THEN SPLIT SHALL BE AS FOLLOWS:
 - A. AMP PART NUMBER ON REAR SHELL, FAR SIDE.
 - B. "AMP" AND DATE CODE ON FRONT SHELL, FAR SIDE.
- 4. REQUIREMENT FOR FULL PIN DIAMETER EXTENSION: .159 [4.04] MIN FOR SHELL SIZE 1
- 5. SIGNAL CONTACTS ARE SOLDER DIPPED WITH SnPb 63/37 TO MEET THE REQUIREMENTS OF MIL-STD-202, METHOD 208.

.040 [1.02]	.432 [10.97]	.769 [19.53]	.238 [6.05]	.432 [10.97]	.509 [12.93]	.334 [8.48]	.989 [25.12]	.671 [16.46]	1.228 [31.19]	MS18273-1	9	1	1218606-6
DIM L	DIM J	DIM H	DIM G	DIM F	DIM E	DIM D	DIM C	DIM B	DIM A	INSERT ARRANGEMENT	NO OF POS	SHELL SIZE	AMP PART NO.

THIS DRAWING IS A CONTROLLED DOCUMENT. DATE: 1-14-08

REVISIONS: 1-14-08

DATE: 1-14-08

BY: [Signature]

APP: [Signature]

PROJECT: PLUG ASSY, AMP/LMITE RIGHT ANGLE, SERIES 109 WITH ONE PICE INSERT

SIZE: A1

DATE: 1-14-08

REV: 1

BY: [Signature]

APP: [Signature]

CUSTOMER DRAWING

DATE: 1-14-08

REV: 1

BY: [Signature]

APP: [Signature]

AMP 480 REV 08/08/08