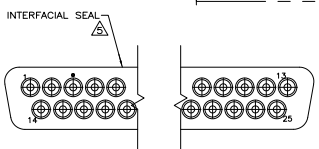


- Δ TRUE POSITION TOLERANCE FOR P.C.B. BOARD LAYOUT (ON SHEET #2) IS .010 [0.25] AT MAX MATERIAL CONDITION. SUGGESTED BOARD THICKNESS IS .093 [2.36]
- 2. THE CONNECTOR DESCRIBED IN THIS DOCUMENT WILL MATE WITH ANY RECEPTACLE CONNECTOR WITH THE SAME INSERT ARRANGEMENT.
- Δ MARKED WITH .047 [1.19]-.062 [1.57] HIGH CHARACTERS. FAR SIDE REFERS TO THE WIDE SIDE OF THE KEYSTONE. NEAR SIDE REFERS TO THE NARROW SIDE OF THE KEYSTONE. IF THE FRONT SHELL IS TOO SMALL FOR 'AMP', AMP PART NUMBER AND DATE CODE, THEN SPLIT SHALL BE AS FOLLOWS:
  - A. AMP PART NUMBER ON REAR SHELL, NEAR SIDE.
  - B. 'AMP' AND DATE CODE ON FRONT SHELL, NEAR SIDE.
- Δ REQUIREMENT FOR FULL PIN DIAMETER EXTENSION: .150 [3.81] MIN FOR SHELL SIZE 3 & 5.
- Δ INTERFACIAL SEAL IS NOT INSTALLED; BULK PACKAGED SEPARATELY.
- Δ FINISH: MATTE TIN-LEAD OVER NICKEL PLATE.
- Δ FINISH: MATTE TIN OVER NICKEL PLATE.
- Δ ALTERNATE CLINCH NUT (QTY=2): CLINCH NUT, #4-40 FEMALE THREADS MAT'L: CARBON STEEL FINISH: ZINC PLATED, YELLOW CHROMATE



Δ	.498	[2.65]	.049	[1.24]	.544	[3.82]	2.188	[55.58]	.236	[5.99]	.436	[11.07]	.620	[15.75]	.448	[11.33]	2.411	[61.24]	2.084	[52.55]	2.650	[67.31]	MS18277-1	50	5	5-1218538-5
Δ	.443	[11.25]	.049	[1.24]	.432	[10.97]	1.635	[41.53]	.236	[5.99]	.436	[11.07]	.509	[12.93]	.334	[8.48]	1.857	[47.17]	1.539	[38.51]	2.103	[53.42]	MS18275-1	25	3	5-1218538-3
Δ	.435	[11.05]	.029	[0.74]	.412	[10.46]	1.615	[41.02]	.224	[5.69]	.416	[10.57]	.479	[12.17]	.324	[8.23]	1.847	[46.91]	1.529	[38.51]	2.073	[52.65]	MS18277-1	50	5	1218538-5
Δ	.498	[2.65]	.049	[1.24]	.544	[3.82]	2.188	[55.58]	.236	[5.99]	.436	[11.07]	.620	[15.75]	.448	[11.33]	2.411	[61.24]	2.084	[52.55]	2.650	[67.31]	MS18277-1	50	5	1218538-5
Δ	.490	[2.45]	.029	[0.74]	.524	[13.31]	2.168	[55.07]	.224	[5.69]	.416	[10.57]	.590	[14.99]	.436	[11.07]	2.401	[60.99]	2.074	[52.30]	2.620	[66.55]	MS18275-1	25	3	1218538-3
Δ	.443	[11.25]	.049	[1.24]	.432	[10.97]	1.635	[41.53]	.236	[5.99]	.436	[11.07]	.509	[12.93]	.334	[8.48]	1.857	[47.17]	1.539	[38.51]	2.103	[53.42]	MS18275-1	25	3	1218538-3
Δ	.435	[11.05]	.029	[0.74]	.412	[10.46]	1.615	[41.02]	.224	[5.69]	.416	[10.57]	.479	[12.17]	.324	[8.23]	1.847	[46.91]	1.529	[38.25]	2.073	[52.65]	MS18275-1	25	3	1218538-3

REMARKS	DIM M	DIM L	DIM J	DIM H	DIM G	DIM F	DIM E	DIM D	DIM C	DIM B	DIM A	INSERT ARRANGEMENT	NO. OF POS.	SHELL SIZE	AMP PART NO.
---------	-------	-------	-------	-------	-------	-------	-------	-------	-------	-------	-------	--------------------	-------------	------------	--------------

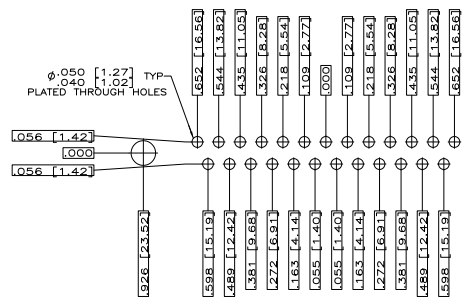
THIS DRAWING IS A CONTROLLED DOCUMENT. **REV. C** THOMAS S. BAKER

DESIGNED BY: TDS  
 DRAWN BY: TDS  
 CHECKED BY: TDS  
 APPROVED BY: TDS

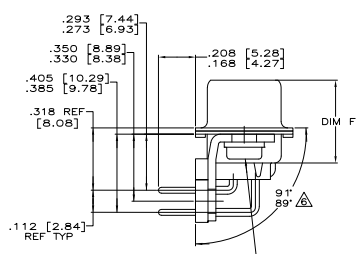
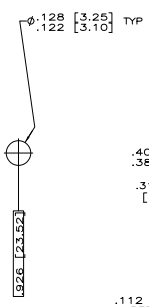
DATE: 07-01-02

REVISED TO: 00779G=1218538

CUSTOMER DRAWING

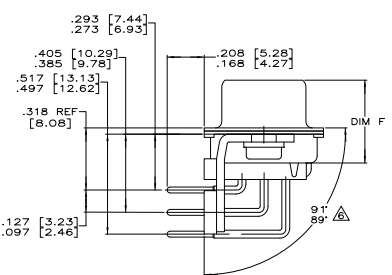


RECOMMENDED P.C. BOARD LAYOUT  
 SHELL SIZE 3 (25 POSITION)  $\Delta$

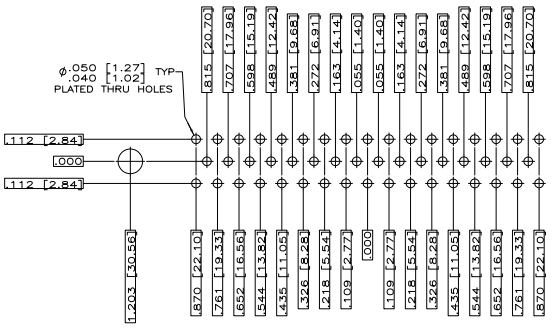


SHELL SIZE 3  
 CONTACT CONFIGURATION  
 BOARDLOCK REMOVED  
 FOR CLARITY

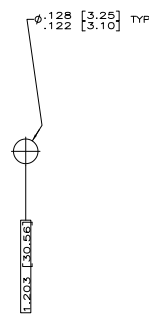
CLINCH NUT (QTY=2)  
 $\Delta$  #4-40 FEMALE THREADS (SELF-LOCKING)  
 MAT'L: CARBON STEEL  
 FINISH: ZINC PLATED, YELLOW CHROMATE



SHELL SIZE 5  
 CONTACT CONFIGURATION  
 BOARDLOCK REMOVED  
 FOR CLARITY



RECOMMENDED P.C. BOARD LAYOUT  
 SHELL SIZE 5 (50 POSITION)  $\Delta$



THIS DRAWING IS A CONTROLLED DOCUMENT.		DESIGNED BY: J. THOMAS	DATE: 5-17-98	TYS Electronics Corporation Harrisburg, PA 17105-3608
DRAWN BY: J. BAKER		CHECKED BY: J. BAKER	DATE: 5-17-98	
DESCRIPTION: PLUG ASSY AMP/PLATE	QUANTITY: 100	REV: 1	DATE: 5-17-98	RIGHT ANGLE SERIES 109, WITH ONE PIECE INSERT
REVISIONS: SEE CALLOUTS	SEE CALLOUTS	REV: 1	DATE: 5-17-98	
CUSTOMER DRAWING		REV: 1	DATE: 5-17-98	