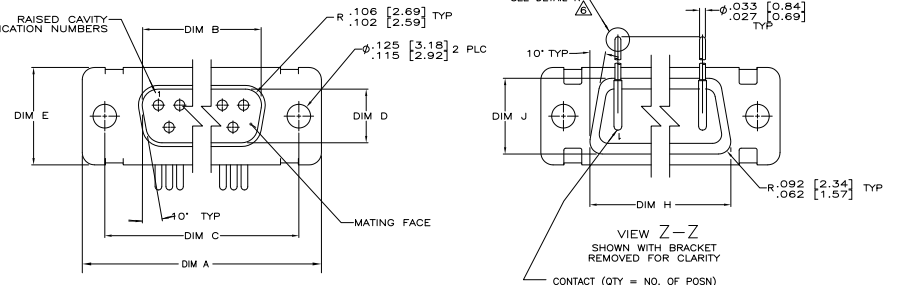
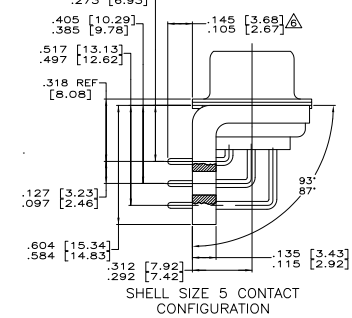
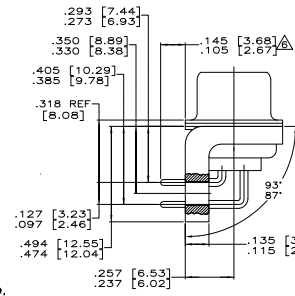
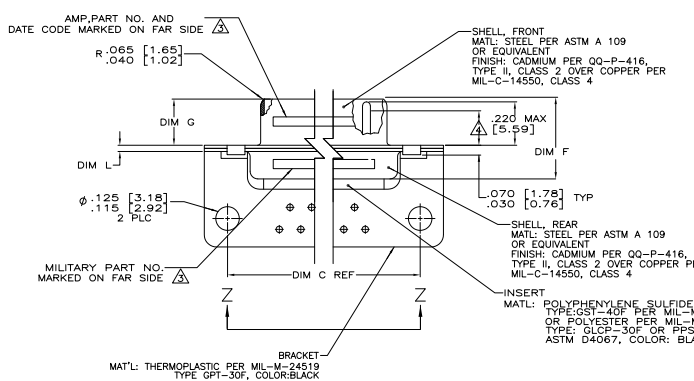


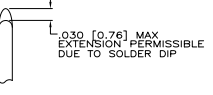
REV	DATE	DESCRIPTION	BY	CHK	APP
1		REVISED PER EDD-11-00930	11MR11	RK	HMR



- SEE SHEET 2 FOR RECOMMENDED P.C. BOARD LAYOUT. TRUE POSITION TOLERANCE FOR P.C. BOARD LAYOUT IS .010 [0.25] AT MAX MATERIAL CONDITION. SUGGESTED BOARD THICKNESS IS .062 [1.57]
2. THE CONNECTORS DESCRIBED IN THIS DOCUMENT MEET THE REQUIREMENTS OF MIL-C-24308 AND MATE WITH ANY RECEPTACLE CONNECTOR WITH SAME INSERT ARRANGEMENT.
3. MARKED WITH .047 [1.19)-.062 [1.57] HIGH CHARACTERS. FAR SIDE REFERS TO THE WIDE SIDE OF THE KEYSTONE. NEAR SIDE REFERS TO THE NARROW SIDE OF THE KEYSTONE. IF THE REAR SHELL IS TOO SMALL FOR THE ENTIRE MILITARY PART NUMBER, MARKING SHALL BE LOCATED AS FOLLOWS:
- A. "M24308" ON FRONT SHELL, FAR SIDE.
  - B. SLASH SHEET AND DASH NUMBER ON REAR SHELL, FAR SIDE.
  - C. "AMP" AND DATE CODE ON FRONT SHELL, NEAR SIDE.
  - D. PART NUMBER ON REAR SHELL, NEAR SIDE.
- IF THE FRONT SHELL IS TOO SMALL FOR "AMP", PART NUMBER AND DATE CODE, MARKING SHALL BE SPLIT AS FOLLOWS:
- A. PART NUMBER ON REAR SHELL, NEAR SIDE.
  - B. "AMP" AND DATE CODE ON FRONT SHELL, NEAR SIDE.
  - C. MILITARY PART NUMBER ON REAR SHELL, FAR SIDE.
4. REQUIREMENT FOR FULL PIN DIAMETER EXTENSION:  
 .159 [4.04] MIN. SHELL SIZES 1 AND 2.  
 .150 [3.81] MIN. SHELL SIZES 3 AND 4.
5. THIS DRAWING SHALL BE INTERPRETED IN ACCORDANCE WITH APPLICABLE STANDARDS LISTED IN MIL-STD-100.
6. SOLDER DIPPED PER MIL-STD-2000 COMPOSITION Sn63 CONFORMING TO QQ-S-571 IN THE ENTIRE AREA OF DIMENSION SHOWN. 1218440-6 THRU -10 ONLY.



DIM L	DIM J	DIM H	DIM G	DIM F	DIM E	DIM D	DIM C	DIM B	DIM A	MS18277-1	NO OF POS	SHELL SIZE	MILITARY P/N ON CONNECTOR	P/N MARKED ON CONNECTOR	PART NO.
.049 [1.24]	.544 [13.82]	2.188 [55.58]	.236 [5.99]	.436 [11.07]	.620 [15.75]	.446 [11.33]	2.411 [61.24]	2.084 [52.55]	2.650 [67.31]	MS18277-1	50	5	M24308/24-29F	1218440-5	1-1218440-0
.029 [0.74]	.524 [13.31]	2.168 [55.07]	.224 [5.69]	.416 [10.57]	.590 [14.99]	.436 [11.07]	2.401 [60.99]	2.074 [52.30]	2.620 [66.55]	MS18276-1	37	4	M24308/24-28F	1218440-4	1218440-9
.049 [1.24]	.432 [10.97]	2.282 [57.96]	.236 [5.99]	.436 [11.07]	.508 [12.93]	.334 [8.48]	2.505 [63.63]	2.187 [54.97]	2.744 [69.70]	MS18275-1	25	3	M24308/24-27F	1218440-3	1218440-8
.029 [0.74]	.412 [10.46]	2.262 [57.45]	.224 [5.69]	.416 [10.57]	.478 [12.17]	.324 [8.23]	2.485 [63.37]	2.177 [54.71]	2.714 [68.94]	MS18274-1	15	2	M24308/24-26F	1218440-2	1218440-7
.049 [1.24]	.432 [10.97]	1.635 [41.53]	.236 [5.99]	.436 [11.07]	.508 [12.93]	.334 [8.48]	1.857 [47.17]	1.539 [38.51]	2.103 [53.42]	MS18273-1	25	3	M24308/24-27F	1218440-3	1218440-3
.029 [0.74]	.412 [10.46]	1.615 [41.02]	.224 [5.69]	.416 [10.57]	.478 [12.17]	.324 [8.23]	1.847 [46.91]	1.529 [38.25]	2.073 [52.65]	MS18274-1	15	2	M24308/24-26F	1218440-2	1218440-2
.040 [1.02]	.432 [10.97]	1.689 [42.93]	.236 [6.05]	.432 [10.97]	.508 [12.93]	.334 [8.48]	1.989 [50.12]	1.671 [42.46]	2.228 [56.19]	MS18273-1	25	3	M24308/24-27F	1218440-3	1218440-1
.020 [0.51]	.412 [10.46]	1.673 [42.25]	.229 [5.82]	.412 [10.46]	.479 [12.17]	.324 [8.23]	1.979 [50.24]	1.661 [42.18]	2.203 [55.82]	MS18274-1	15	2	M24308/24-26F	1218440-2	1218440-1



DETAIL K  
 SCALE 8:1  
 FOR 1218440-6 THRU -10 ONLY

THIS DRAWING IS A CONTROLLED DOCUMENT.

REVISIONS: 1-13-88

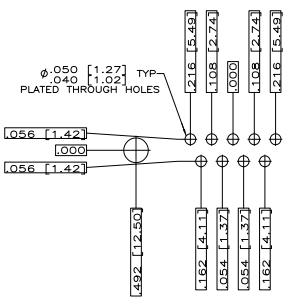
TE Connectivity

PLUG ASSY, AMP/PLATE RIGHT ANGLE, SERIES 109 SIZES 1 THRU 5

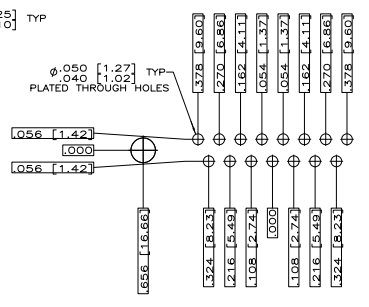
DATE: 00779G-1218440

CUSTOMER DRAWING

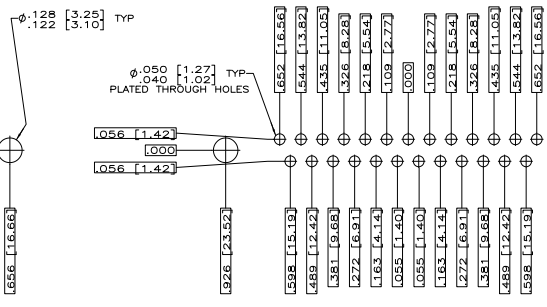
REV	DATE	DESCRIPTION	BY	APP
DF	DO	SEE SHEET 1	-	-



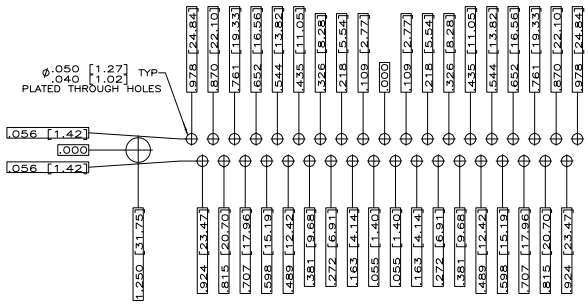
RECOMMENDED P.C. BOARD LAYOUT  
 SHELL SIZE 1 (9 POSITION) ▲



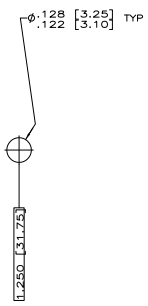
RECOMMENDED P.C. BOARD LAYOUT  
 SHELL SIZE 2 (15 POSITION) ▲



RECOMMENDED P.C. BOARD LAYOUT  
 SHELL SIZE 3 (25 POSITION) ▲



RECOMMENDED P.C. BOARD LAYOUT  
 SHELL SIZE 4 (37 POSITION) ▲



RECOMMENDED P.C. BOARD LAYOUT  
 SHELL SIZE 5 (50 POSITION) ▲

THIS DRAWING IS A CONTROLLED DOCUMENT. DATE: 11-13-99

DESIGNER: [ ]	APPROVED: [ ]	DATE: 12-13-99	REV: 1
DRAWN: [ ]		DATE: 12-13-99	REV: 2
CHECKED: [ ]		DATE: 12-13-99	REV: 3
DATE: 12-13-99		DATE: 12-13-99	REV: 4

TE Connectivity  
 PLUG ASS'Y AMP/LITE  
 RIGHT ANGLE SERIES 109 SIZE 1 THRU 5  
 SIZE: 109  
 DRAWING NO: 00779  
 CUSTOMER DRAWING: 1218440  
 SHEET: 4.1 OF 2