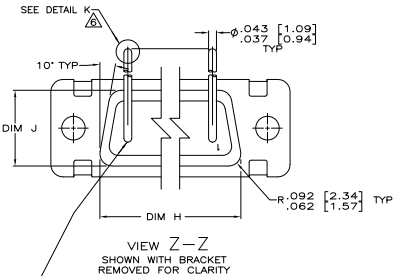
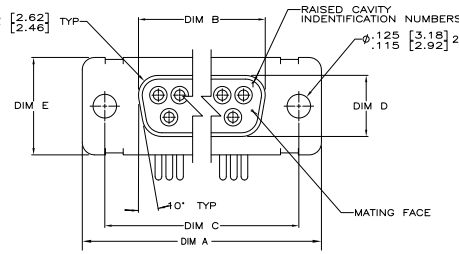
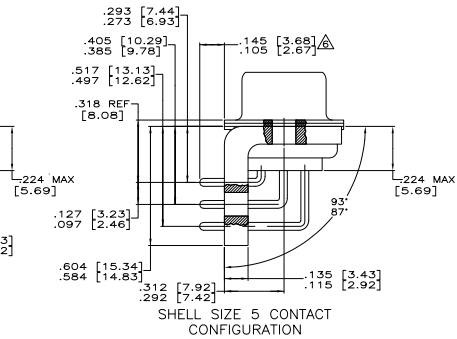
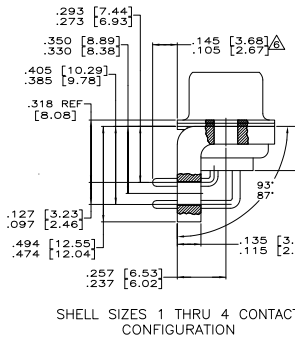
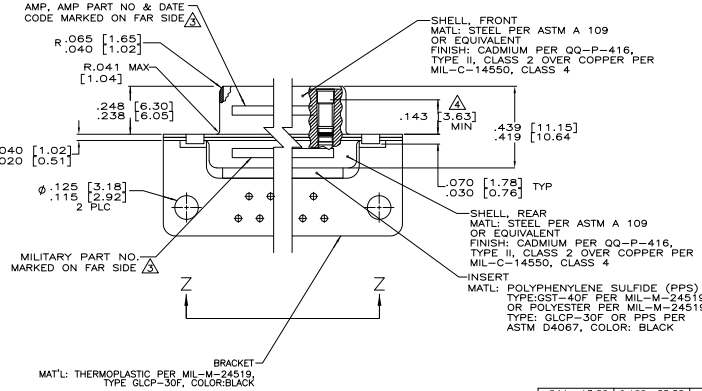


REV	DATE	DESCRIPTION	BY	APP
1	REV PER ESD-07-07102		205EP07	PY EW

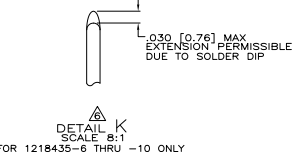


CONTACT (QTY = NO. OF POSN)
 MATL: BRASS PER ASTM-B-16, OR BERYLLIUM
 COPPER PER ASTM-B-194
 FINISH: GOLD PER MIL-G-45204, TYPE II,
 GRADE C, CLASS 1 IN CONTACT MATING AREA,
 0.00010 [0.0003] MIN THK GOLD PER MIL-G-45204
 OVER .000050 [0.0013] MIN THK NICKEL
 PER QQ-N-290 ON CONTACT BODY

- SEE SHEET 2 FOR RECOMMENDED P.C. BOARD LAYOUT. TRUE POSITION TOLERANCE FOR P.C. BOARD LAYOUT IS .010 [0.25] AT MAX MATERIAL CONDITION. SUGGESTED BOARD THICKNESS IS .125 [3.18]
- THE CONNECTORS DESCRIBED IN THIS DOCUMENT MEET THE REQUIREMENTS OF MIL-C-24308 AND MATE WITH ANY PLUG CONNECTOR WITH SAME INSERT ARRANGEMENT.
- MARKED WITH .047 [1.19]-.062 [1.57] HIGH CHARACTERS. FAR SIDE REFERS TO THE WIDE SIDE OF THE KEYSTONE. NEAR SIDE REFERS TO THE NARROW SIDE OF THE KEYSTONE. IF THE REAR SHELL IS TOO SMALL FOR THE ENTIRE MILITARY PART NUMBER, MARKING SHALL BE LOCATED AS FOLLOWS:
 - A. "M24308" ON FRONT SHELL, FAR SIDE.
 - B. SLASH SHEET AND DASH NUMBER ON REAR SHELL, FAR SIDE.
 - C. "AMP" AND DATE CODE ON FRONT SHELL, NEAR SIDE.
 - D. AMP PART NUMBER ON REAR SHELL, NEAR SIDE.
- IF THE FRONT SHELL IS TOO SMALL FOR "AMP", AMP PART NUMBER AND DATE CODE, MARKING SHALL BE SPLIT AS FOLLOWS:
 - A. AMP PART NUMBER ON REAR SHELL, NEAR SIDE.
 - B. "AMP" AND DATE CODE ON FRONT SHELL, NEAR SIDE.
 - C. MILITARY PART NUMBER ON REAR SHELL, FAR SIDE.
- POINT OF ELECTRICAL ENGAGEMENT - AS MEASURED WITH A .0390 [0.991]-0.393 [9.998] DIA SQUARE ENDED TEST PIN.
- THIS DRAWING SHALL BE INTERPRETED IN ACCORDANCE WITH APPLICABLE STANDARDS LISTED IN MIL-STD-100.
- SOLDER DIP PER MIL-STD-2000 COMPOSITION Sn63 CONFORMING TO QQ-S-571 IN THE ENTIRE AREA OF DIMENSION SHOWN. 1218435-6 THRU -10 ONLY.



DIM J	DIM H	DIM E	DIM D	DIM C	DIM B	DIM A	NO. OF POSN	SHELL SIZE	MILITARY P/N	AMP P/N	AMP PART NO.	
.544 [13.82]	2.188 [55.58]	.620 [15.75]	.428 [10.87]	2.411 [61.24]	2.069 [52.55]	2.650 [67.31]	MS18277-1	50	5	M24308/23-41F	1218435-5	1-1218435-0
.524 [13.31]	2.168 [55.07]	.590 [14.99]	.418 [10.69]	2.401 [60.99]	2.059 [52.30]	2.620 [66.55]	MS18276-1	37	4	M24308/23-40F	1218435-4	1218435-9
.432 [10.97]	2.282 [57.96]	.509 [12.93]	.316 [8.03]	2.505 [63.63]	2.164 [54.97]	2.744 [69.70]	MS18275-1	25	3	M24308/23-39F	1218435-3	1218435-8
.432 [10.97]	1.635 [41.53]	.509 [12.93]	.316 [8.03]	1.857 [47.17]	1.516 [38.51]	2.103 [53.42]	MS18274-1	15	2	M24308/23-38F	1218435-2	1218435-7
.412 [10.46]	1.815 [46.02]	.479 [12.17]	.306 [7.77]	1.847 [46.91]	1.506 [38.25]	2.073 [52.65]	MS18273-1	9	1	M24308/23-37F	1218435-1	1218435-6
.432 [10.97]	1.083 [27.76]	.509 [12.93]	.316 [8.03]	1.317 [33.45]	.976 [24.79]	1.556 [39.52]	MS18277-1	50	5	M24308/23-41F	1218435-5	1218435-5
.432 [10.97]	2.282 [57.96]	.509 [12.93]	.316 [8.03]	2.505 [63.63]	2.164 [54.97]	2.744 [69.70]	MS18276-1	37	4	M24308/23-40F	1218435-4	1218435-4
.432 [10.97]	1.635 [41.53]	.509 [12.93]	.316 [8.03]	1.857 [47.17]	1.516 [38.51]	2.103 [53.42]	MS18275-1	25	3	M24308/23-39F	1218435-3	1218435-3
.412 [10.46]	1.815 [46.02]	.479 [12.17]	.306 [7.77]	1.847 [46.91]	1.506 [38.25]	2.073 [52.65]	MS18274-1	15	2	M24308/23-38F	1218435-2	1218435-2
.432 [10.97]	769 [19.53]	.509 [12.93]	.316 [8.03]	.989 [25.12]	.648 [16.46]	1.228 [31.19]	MS18273-1	9	1	M24308/23-37F	1218435-1	1218435-1
.412 [10.46]	749 [19.02]	.479 [12.17]	.306 [7.77]	.979 [24.87]	.638 [16.21]	1.198 [30.43]	MS18273-1	9	1	M24308/23-37F	1218435-1	1218435-1



THIS DRAWING IS A CONTROLLED DOCUMENT.

REVISIONS: 12-18-88

RECEPTACLE ASSY, AMP/LITE RIGHT ANGLE, SERIES 109 SIZES 1 THRU 5

DATE: 00779

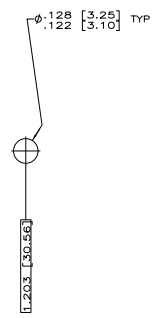
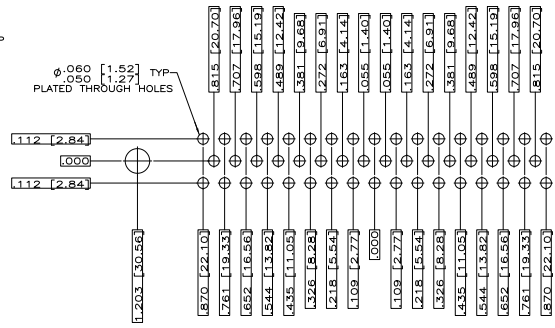
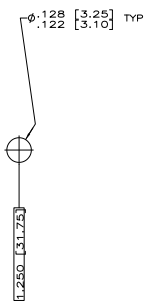
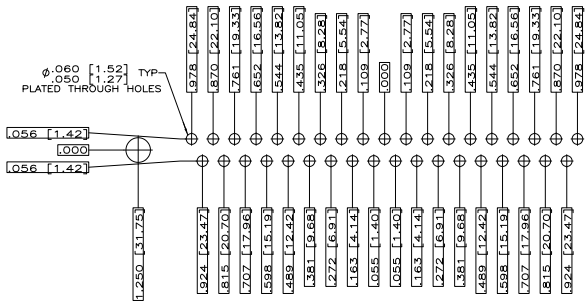
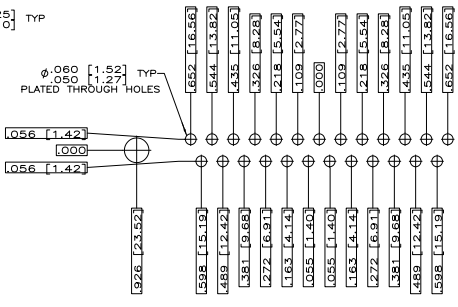
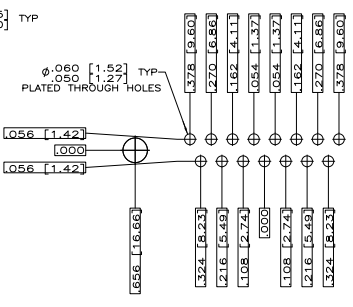
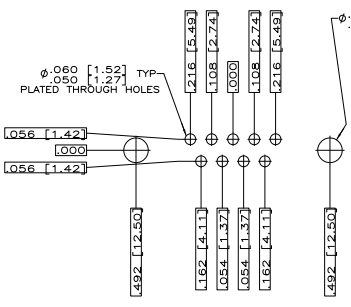
SIZE: 4:1

REV: 1

APP: D

THIS DRAWING IS UNPUBLISHED. ALL RIGHTS RESERVED.
 © 2008 Tyco Electronics Corporation

REV	DATE	DESCRIPTION	BY	APP'D
1	12-13-08	REVISIONS		
2				
3				
4				
5				
6				
7				
8				



THIS DRAWING IS A CONTROLLED DOCUMENT.		REV. CONTROL	12-13-08	Tyco Electronics		Tyco Electronics Corporation Harrisburg, PA 17105-3608	
DESIGNER	APPROVED	DATE	12-13-08	REV. CONTROL	DATE	12-13-08	12-13-08
WORKS	REVISIONS	DATE	12-13-08	DATE	12-13-08	12-13-08	12-13-08
SEE CALLOUTS	SEE CALLOUTS	DATE	12-13-08	DATE	12-13-08	12-13-08	12-13-08
CUSTOMER DRAWING				SIZE	A1	DATE	12-13-08
RECEPTACLE ASSY, AMP/LIMIT				SIZE	109, SIZE 5	DATE	12-13-08
RIGHT ANGLE, SERIES 109, SIZE 5				DATE	12-13-08	DATE	12-13-08
DRAWING NO. 100779				DATE	12-13-08	DATE	12-13-08
1218435				DATE	12-13-08	DATE	12-13-08
REV. 4.1				DATE	12-13-08	DATE	12-13-08
PAGE 2				DATE	12-13-08	DATE	12-13-08
OF 2				DATE	12-13-08	DATE	12-13-08